



# **REGIONAL ANATOMY**

**BS RIT**

**2<sup>ND</sup> SEMESTER**

**DR DANISH**

**DPT(S.M.C),MPPTA**



# Anterolateral Abdominal Wall

---

- **Layers of the Anterolateral Abdominal Wall**
- Skin
- Superficial fascia
- Deep fascia
- Muscles
- Transversalis fascia
- Extraperitoneal fascia
- Parietal peritoneum

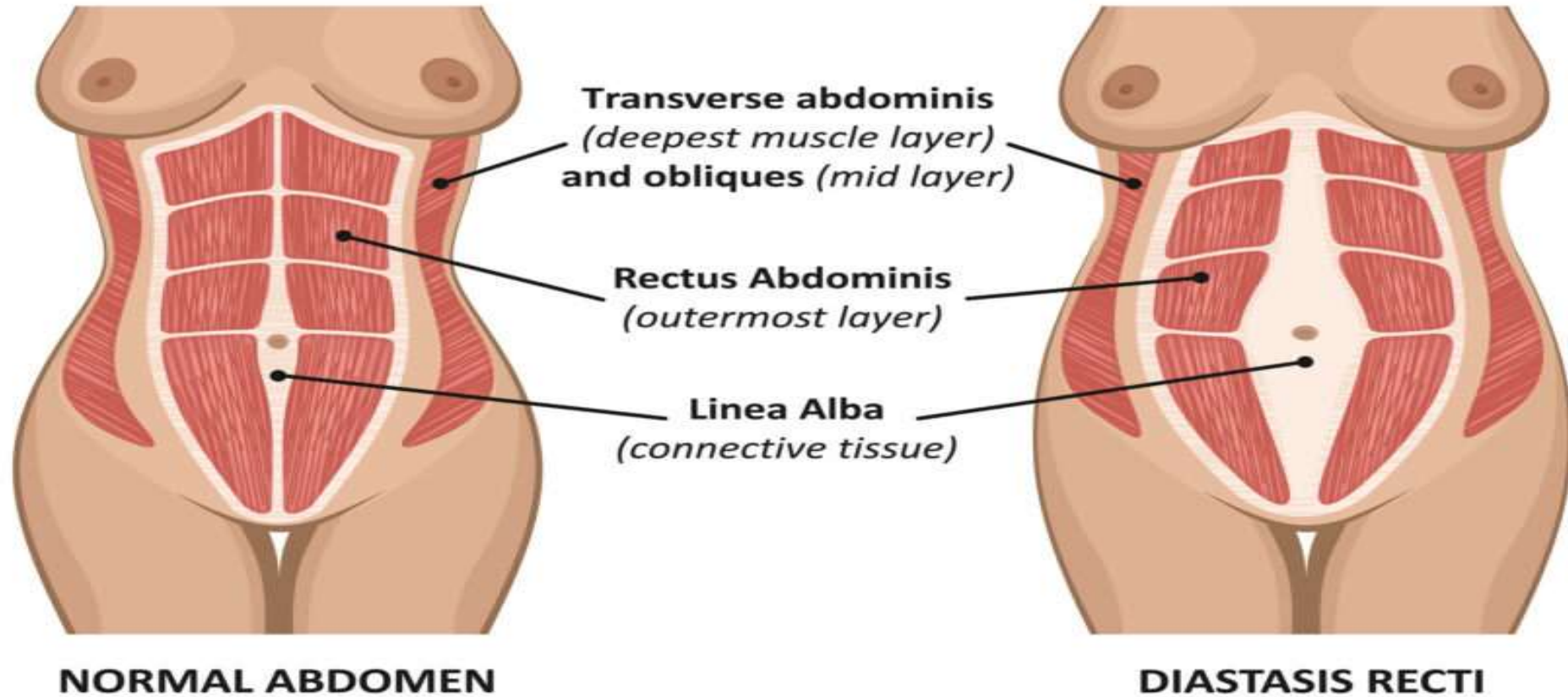


# Skin

---

- Loosely attached to underlying structures except at the umbilicus.
- Natural skin cleavage lines are constant around the trunk.
- Umbilicus is a scar representing the site of attachment of the umbilical cord.
- Located in the linea alba.

# DIASTASIS RECTI

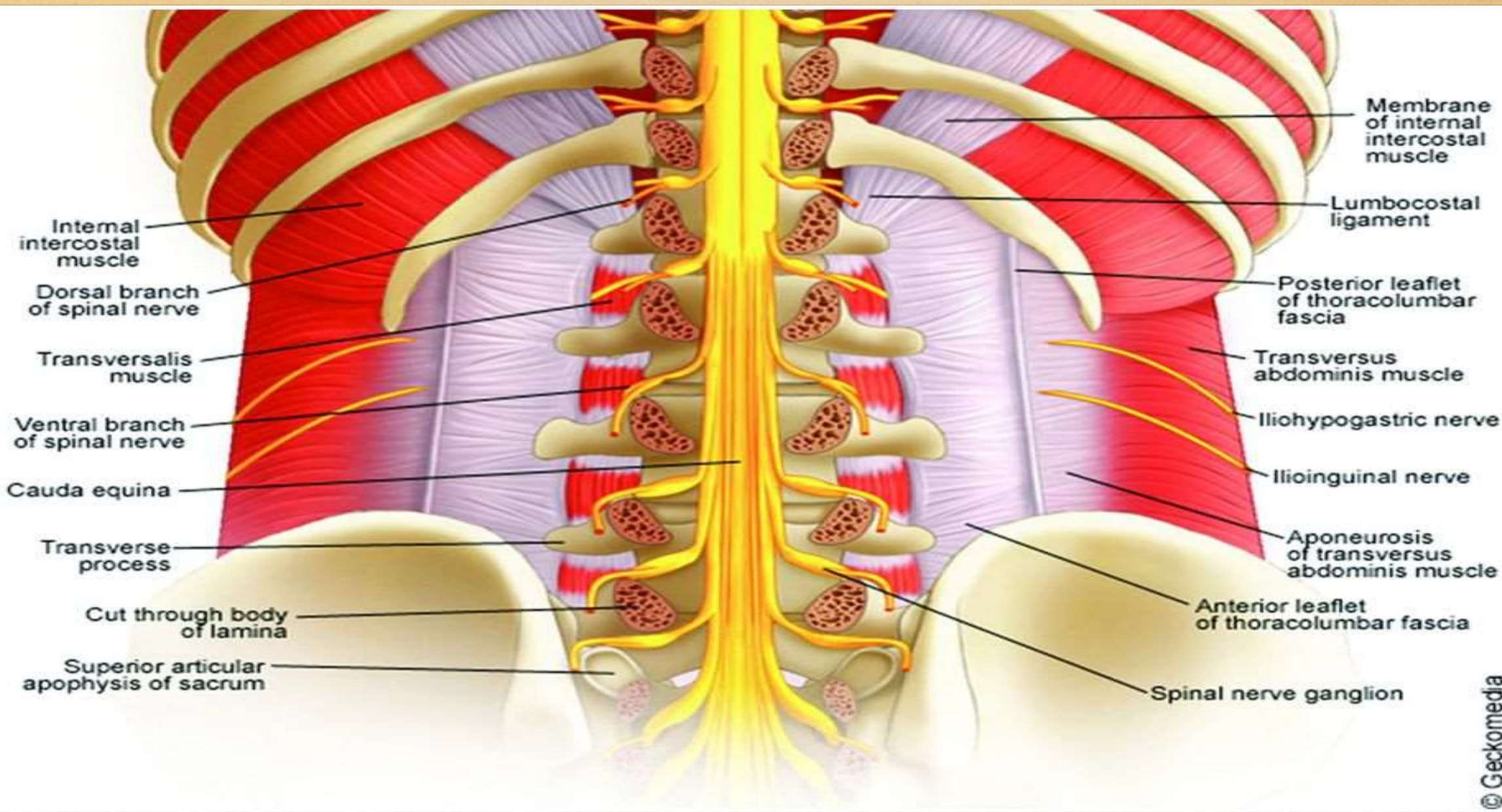




# Nerve Supply of Skin

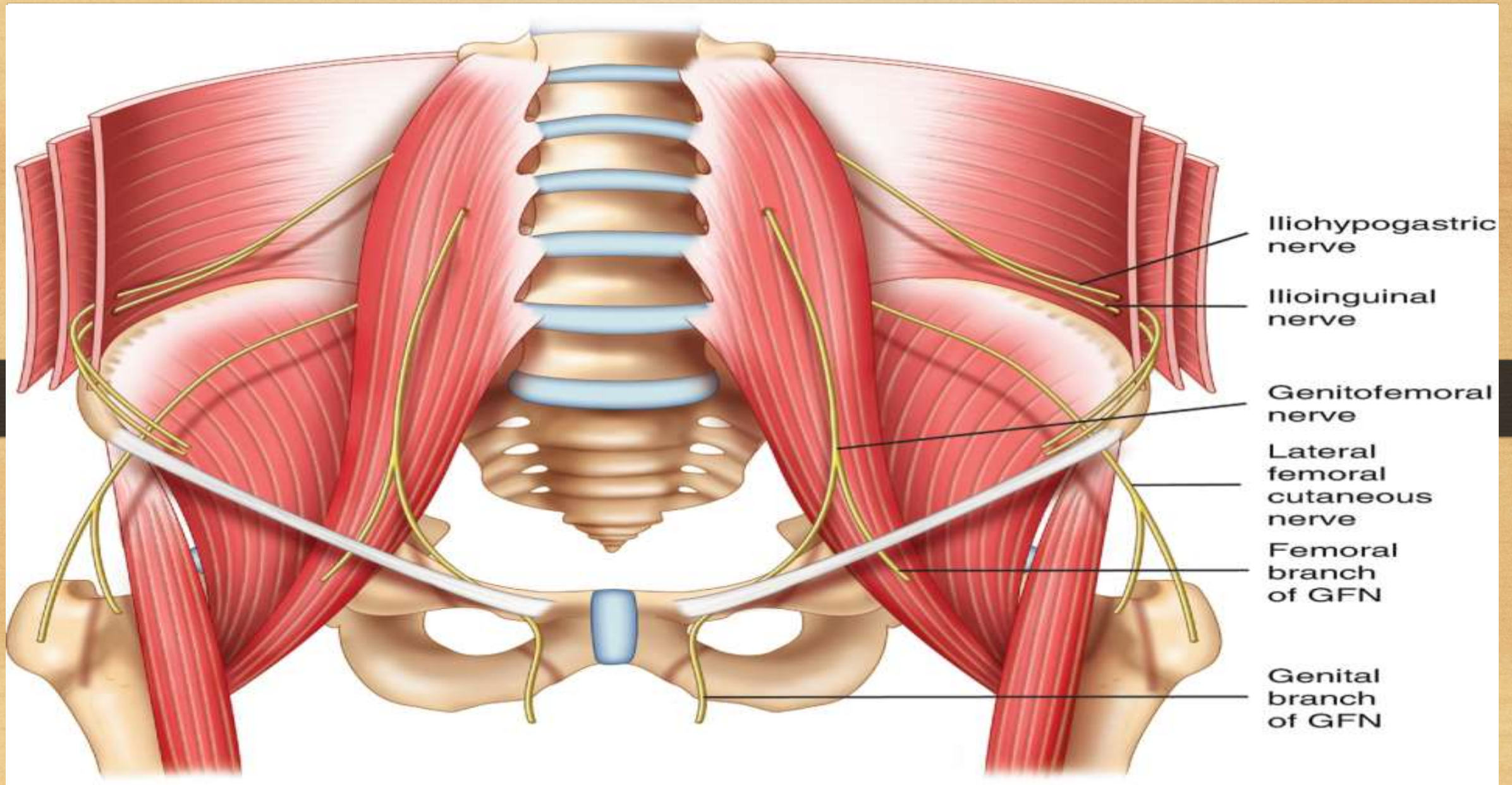
---

- Supplied by anterior rami of **T7–T12** and **L1** spinal nerves.
- Thoracoabdominal nerves: **T7–T11**.
- **T12** = Subcostal nerve.
- **L1** represented by:
  - Iliohypogastric nerve
  - Ilioinguinal nerve



Internal intercostal muscle  
Dorsal branch of spinal nerve  
Transversalis muscle  
Ventral branch of spinal nerve  
Cauda equina  
Transverse process  
Cut through body of lamina  
Superior articular apophysis of sacrum

Membrane of internal intercostal muscle  
Lumbocostal ligament  
Posterior leaflet of thoracolumbar fascia  
Transversus abdominis muscle  
Iliohypogastric nerve  
Ilioinguinal nerve  
Aponeurosis of transversus abdominis muscle  
Anterior leaflet of thoracolumbar fascia  
Spinal nerve ganglion





# Dermatomes

---

- A **dermatome** is an area of skin that receives sensory signals (like pain, touch, and temperature) from a single, specific spinal nerve.
- **T7:** Epigastrium near the xiphoid process.
- **T10:** Umbilical region.
- **L1:** Skin above the inguinal ligament and symphysis pubis.



# Arterial Supply

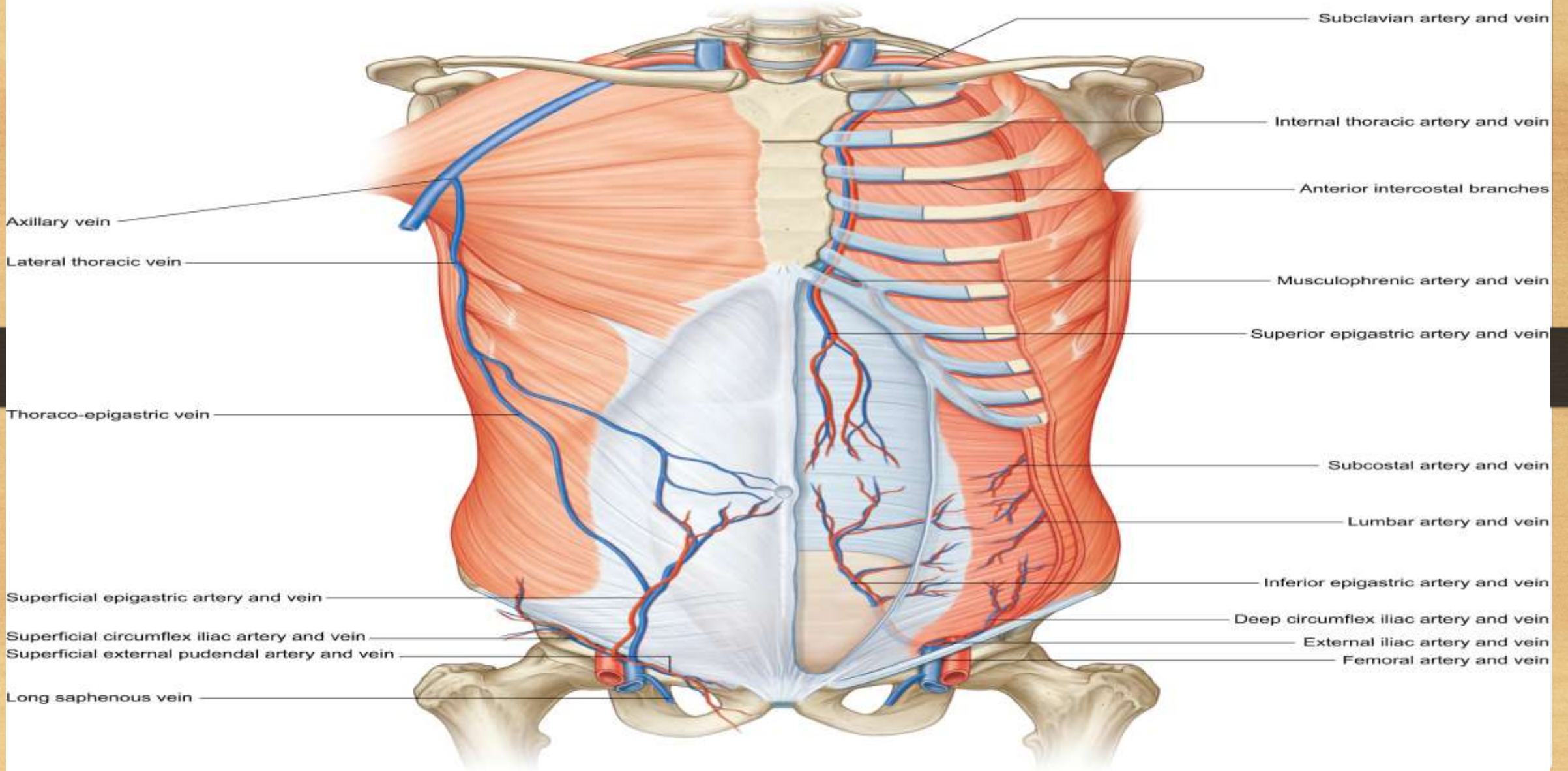
---

- Skin supplied by branches of:
  - Superior epigastric artery
  - Inferior epigastric artery
  - Intercostal arteries
  - Lumbar arteries
  - Deep circumflex iliac artery

**A**

**Superficial vessels**

**Deep vessels**





# CONTINUED

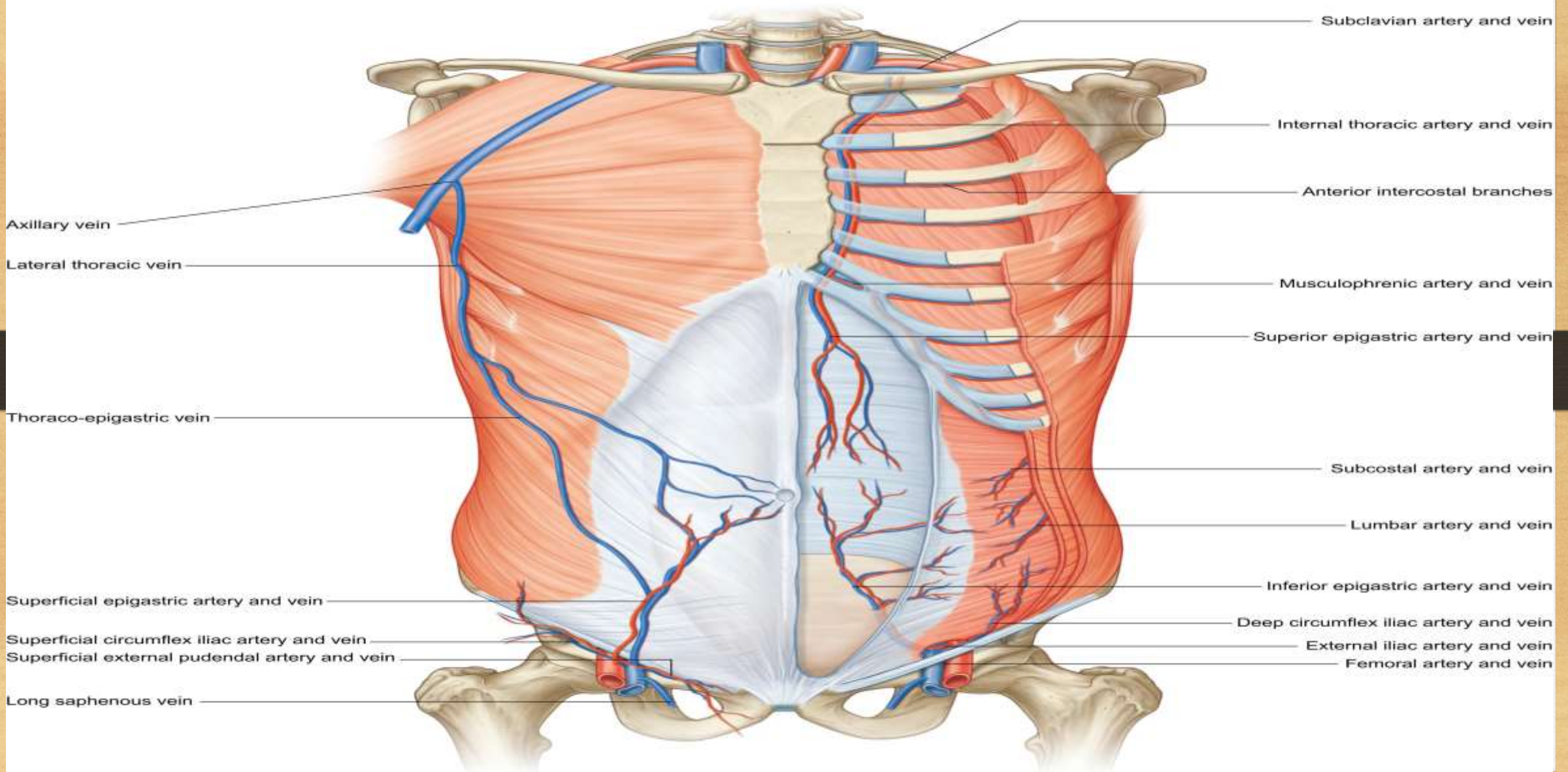
---

- Inguinal region supplied by:
- Superficial epigastric artery
- Superficial circumflex iliac artery
- Superficial external pudendal artery

**A**

**Superficial vessels**

**Deep vessels**





# Venous Drainage

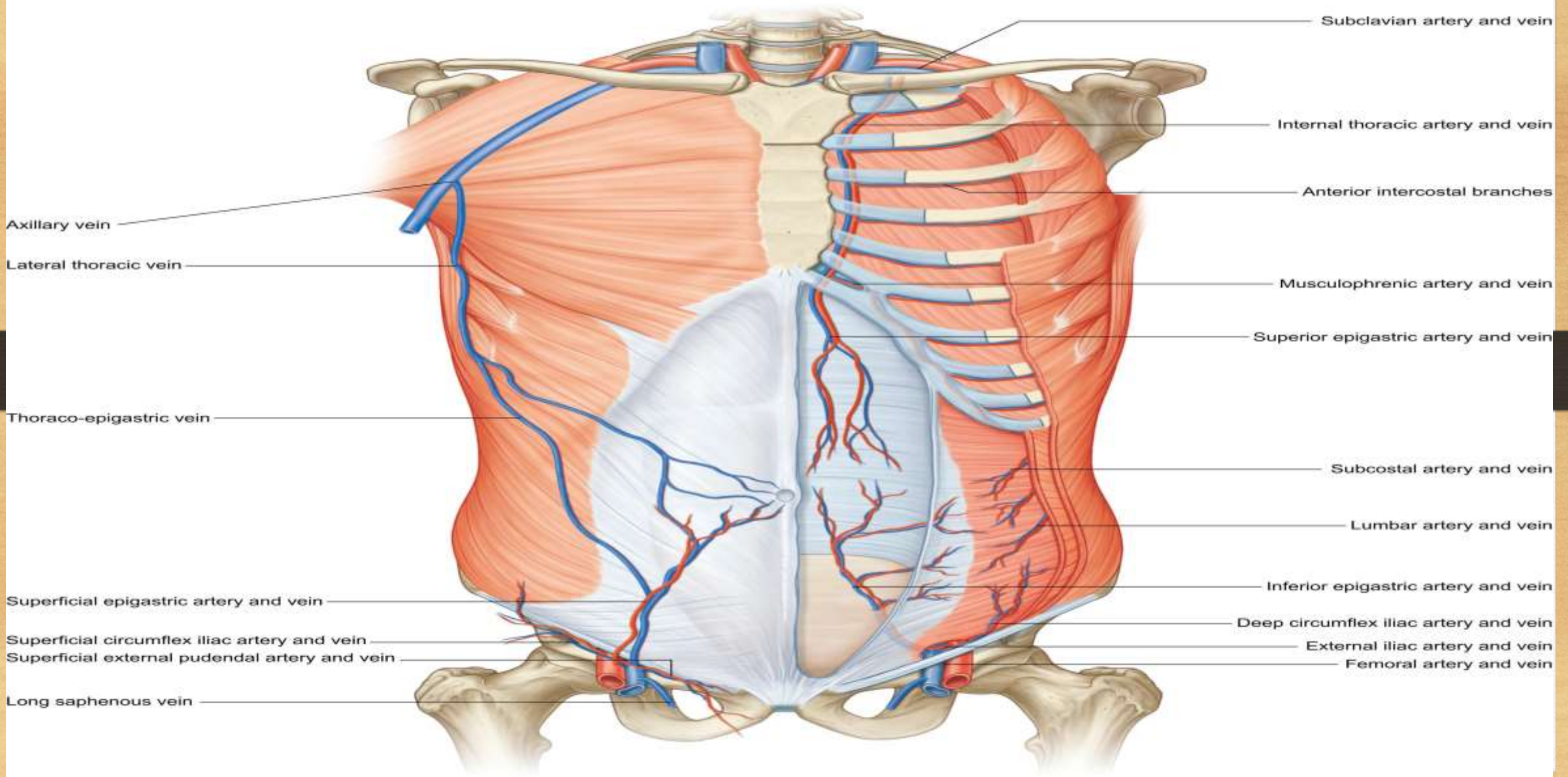
---

- Upper abdominal wall drains mainly to the **axillary vein** via the lateral thoracic vein.
- Lower abdominal wall drains mainly to the **femoral vein** via:
  - Superficial epigastric vein
  - Great saphenous vein

**A**

**Superficial vessels**

**Deep vessels**

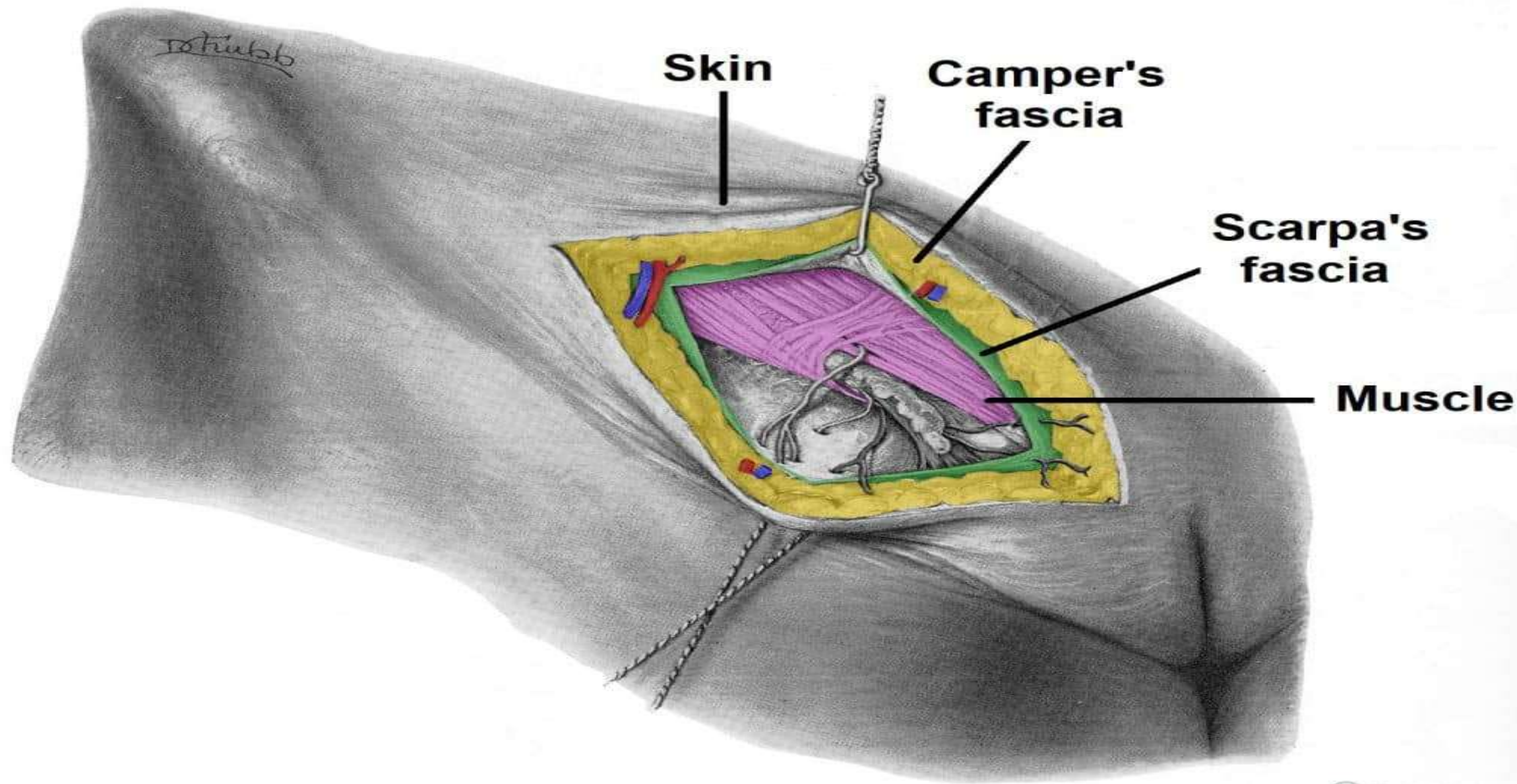


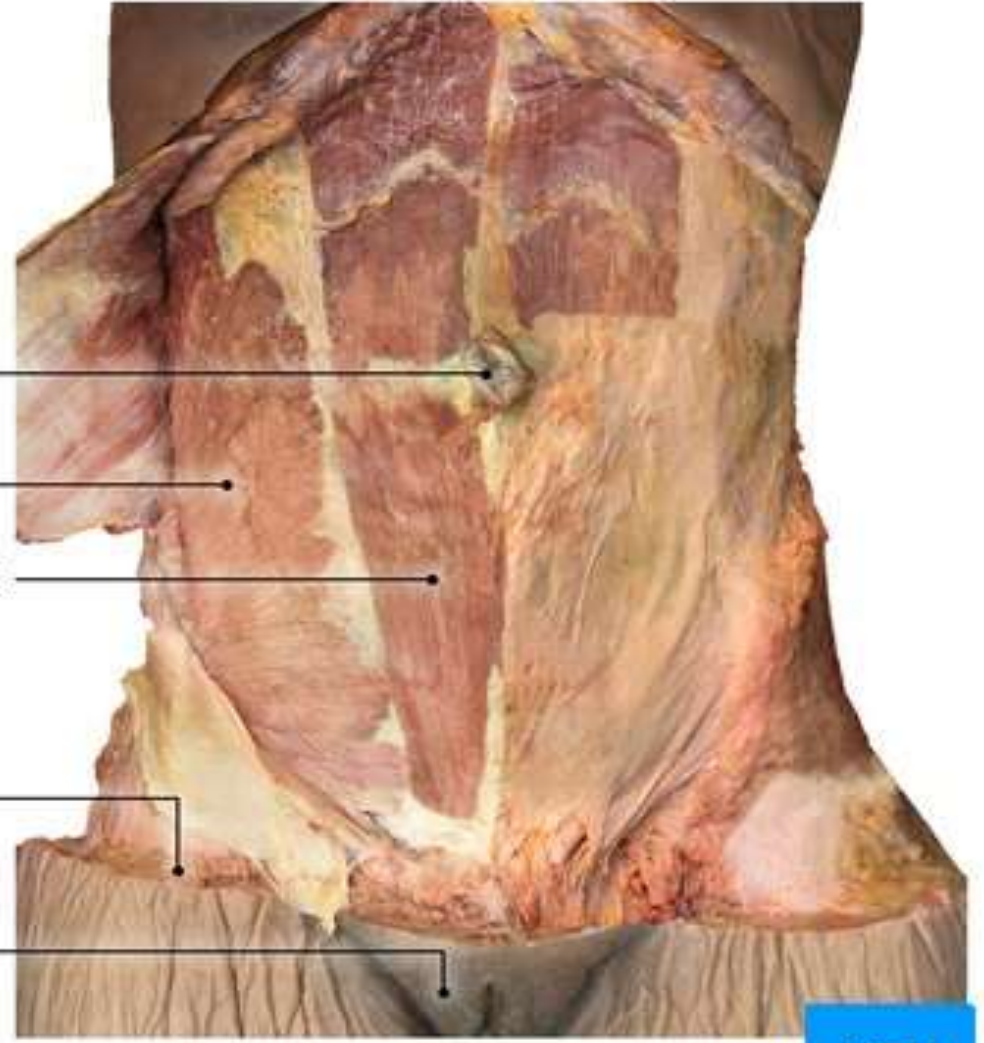


# Superficial Fascia

---

- Divided into two layers:
  - **Camper's fascia** – fatty superficial layer.
  - **Scarpa's fascia** – membranous deep layer.
- Fatty layer varies with body build and may be absent in thin individuals.





Umbilicus

Internal oblique

Rectus abdominis

Scarpa's fascia

Camper's fascia

Labia major



# Deep Fascia

---

- Thin connective tissue layer covering abdominal muscles.
- Lies immediately deep to the membranous layer of superficial fascia.



