



# Intercostal Muscles

External  
intercostal  
muscle

Innermost  
intercostal  
muscle

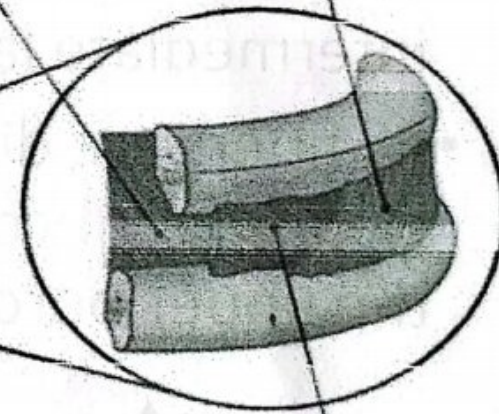
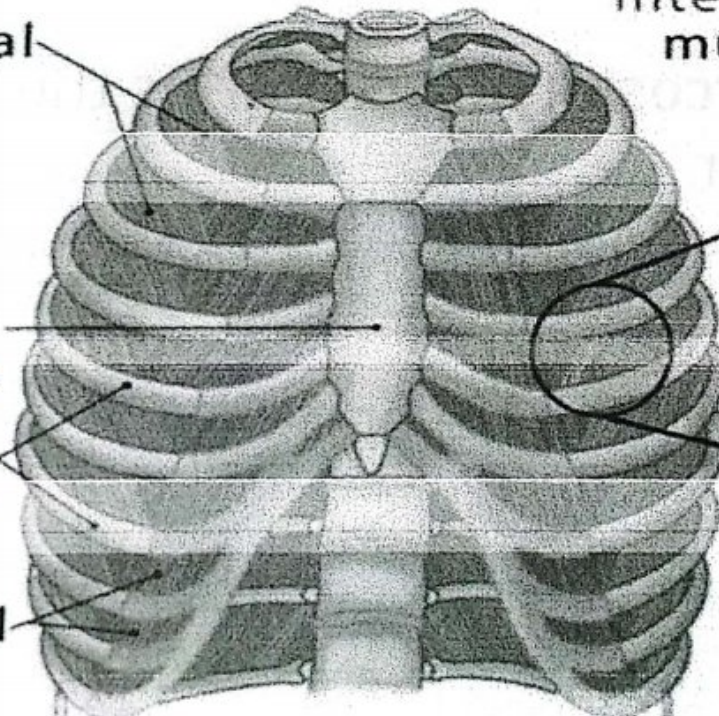
External  
intercostal  
muscle

Sternum

Ribs

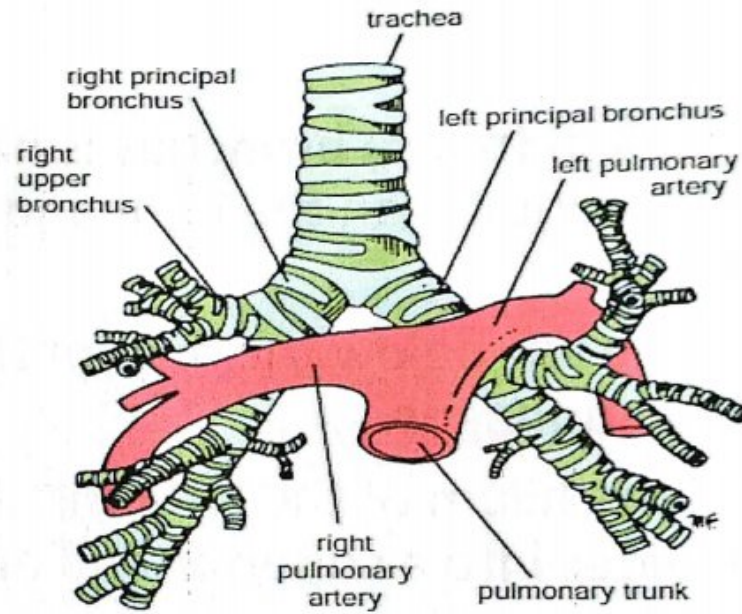
Internal  
intercostal  
muscle

Internal  
intercostal  
muscle

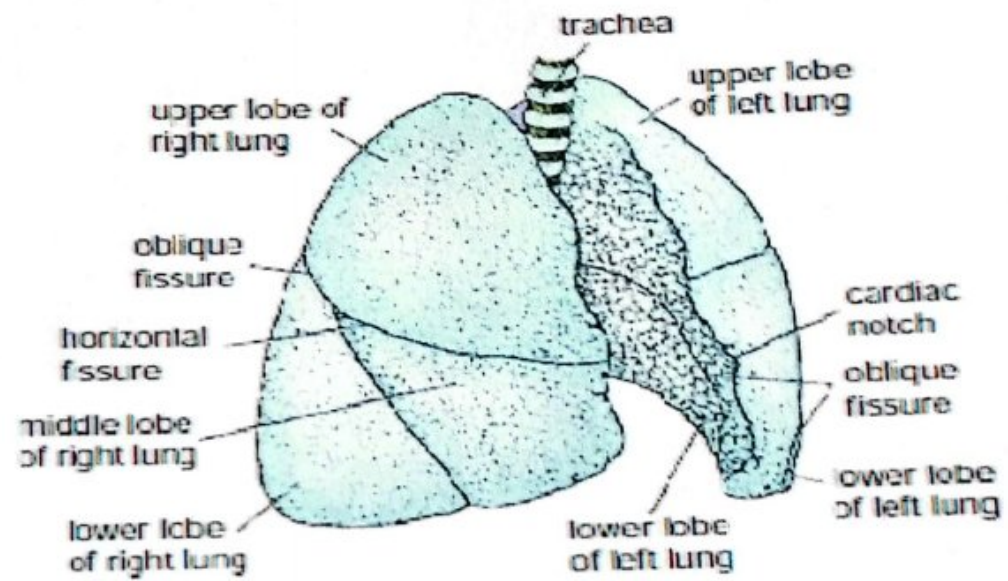


①  
②  
③

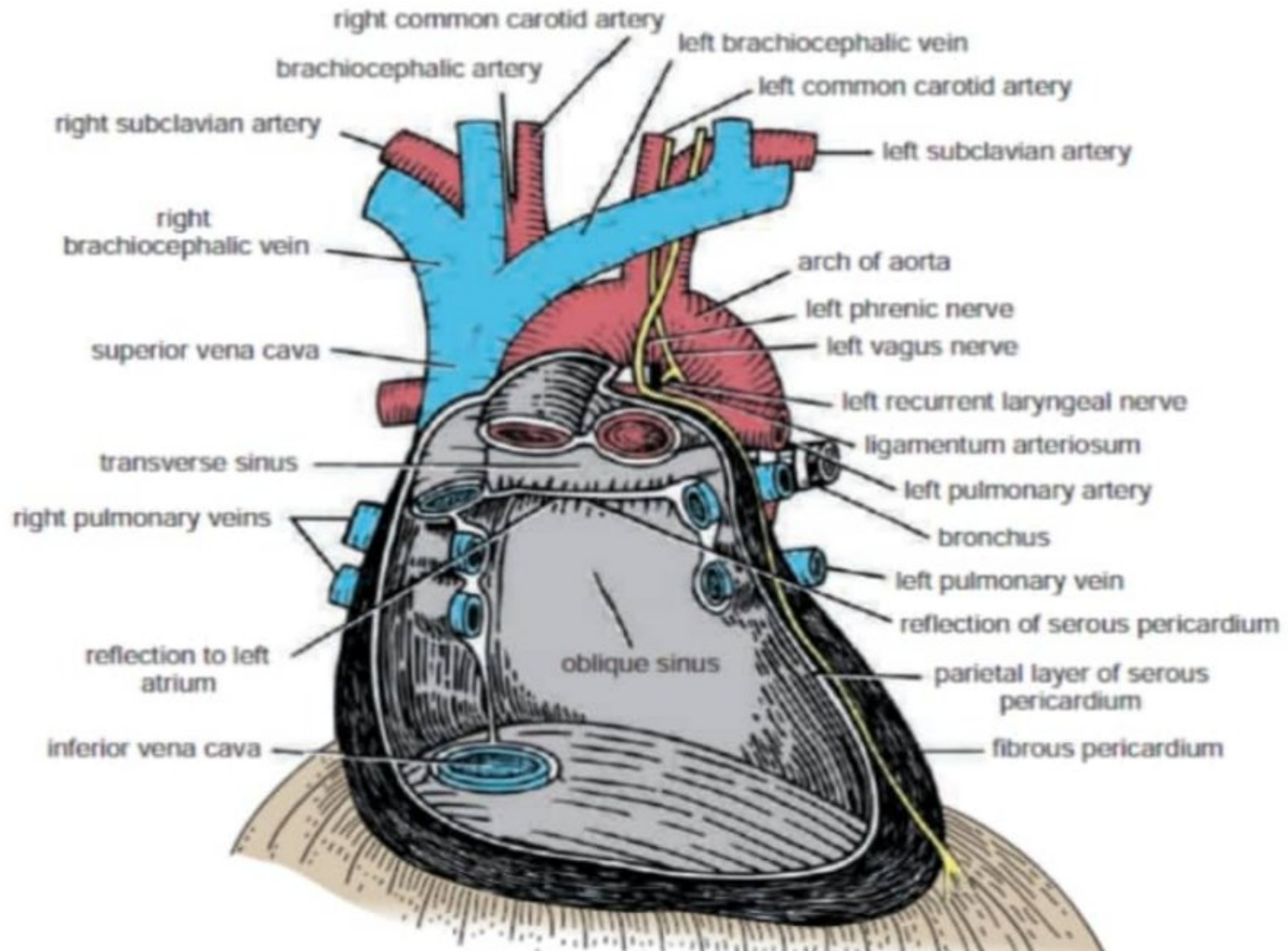
© TheRespiratorySystem.com



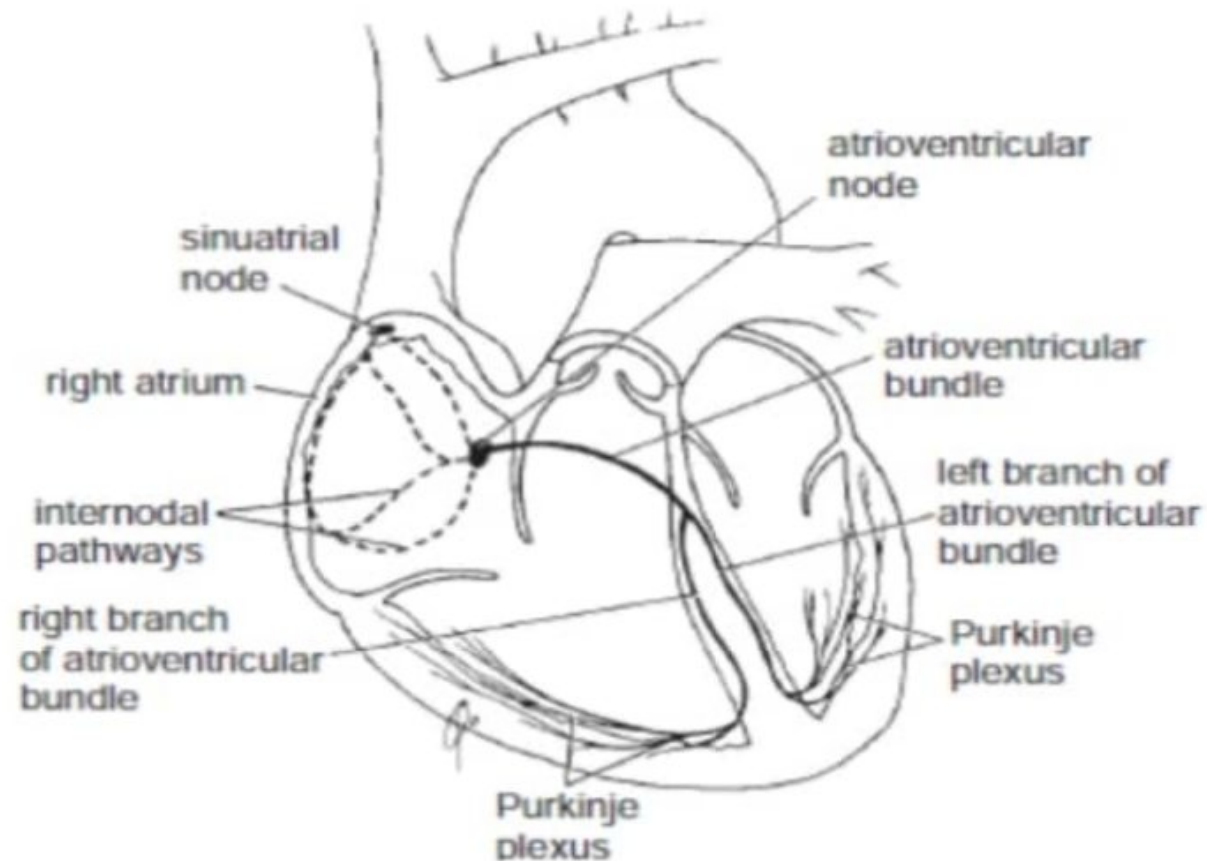
**FIGURE 3.11** Relationship of the pulmonary arteries to the

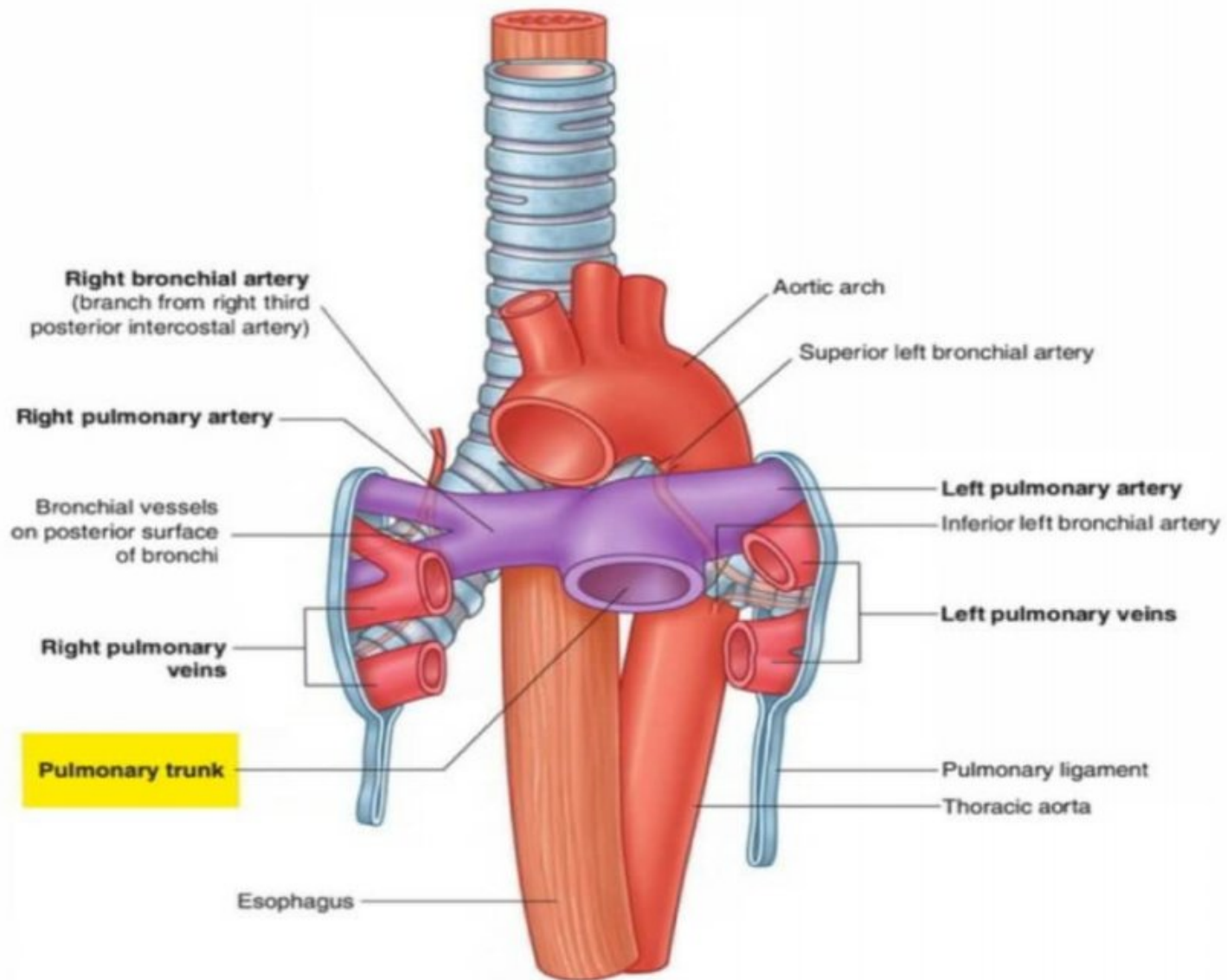


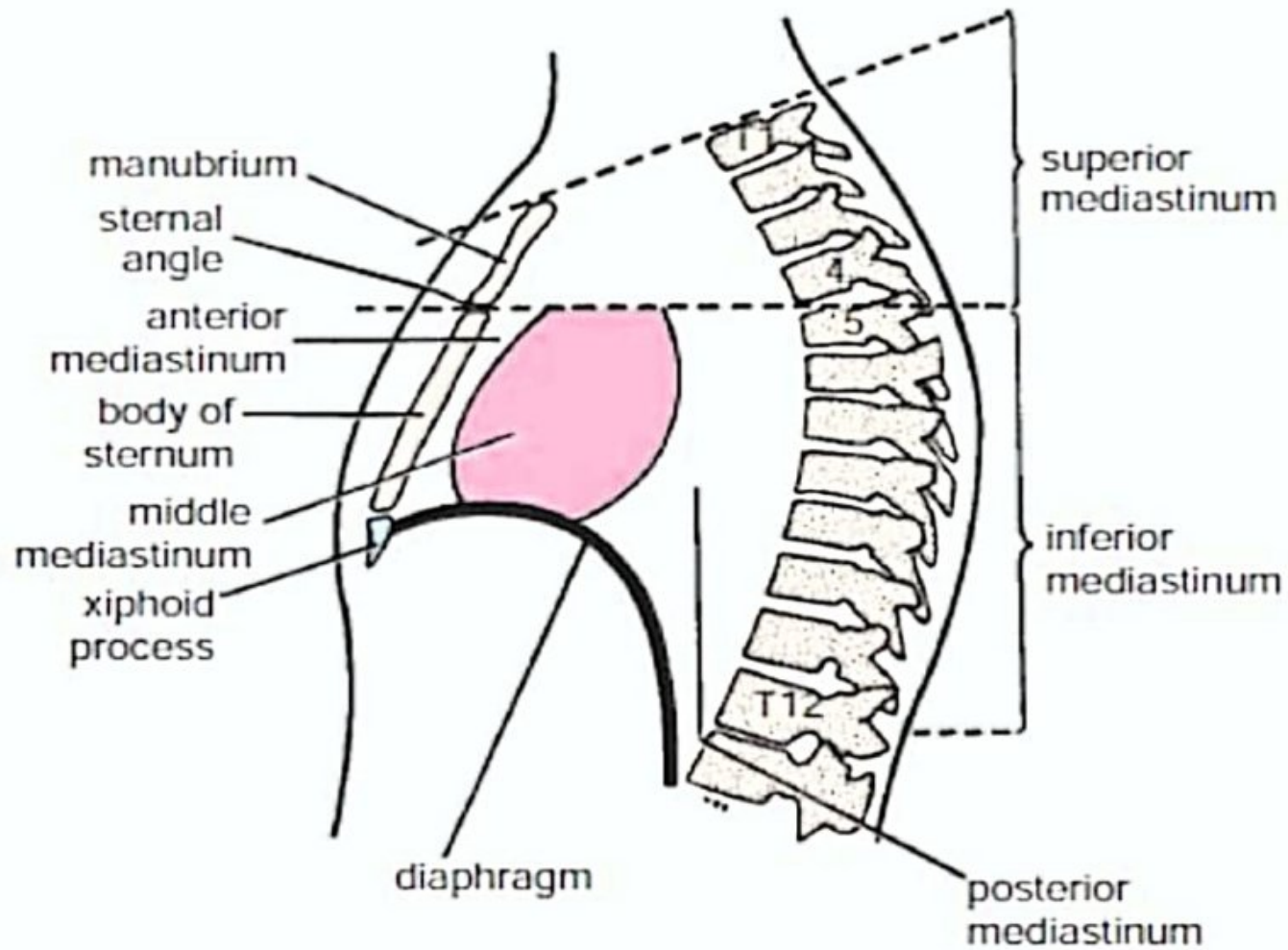
A



# The conducting system of the heart.

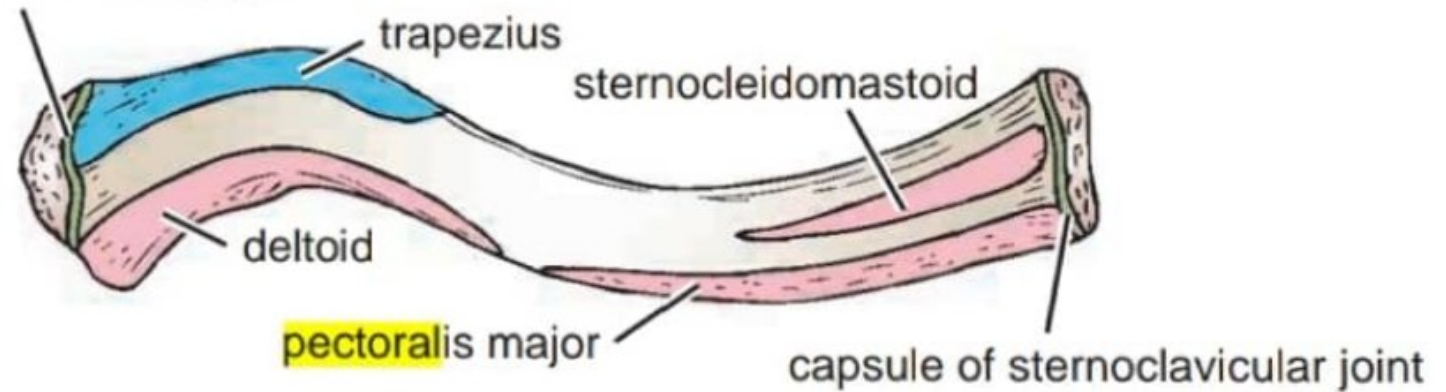






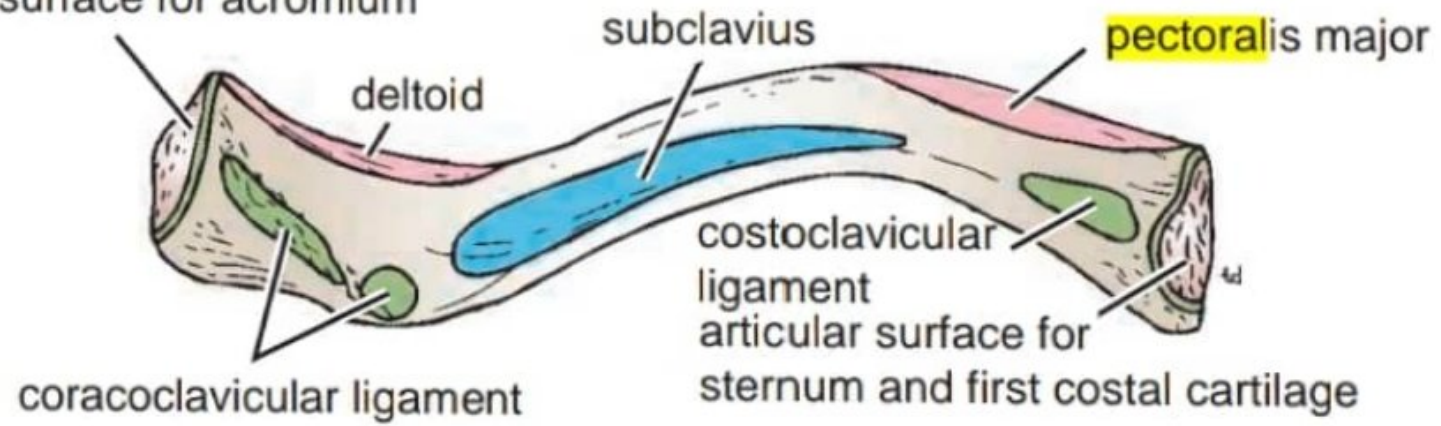
**FIGURE 3.2** Subdivisions of the mediastinum.

capsule of acromioclavicular joint



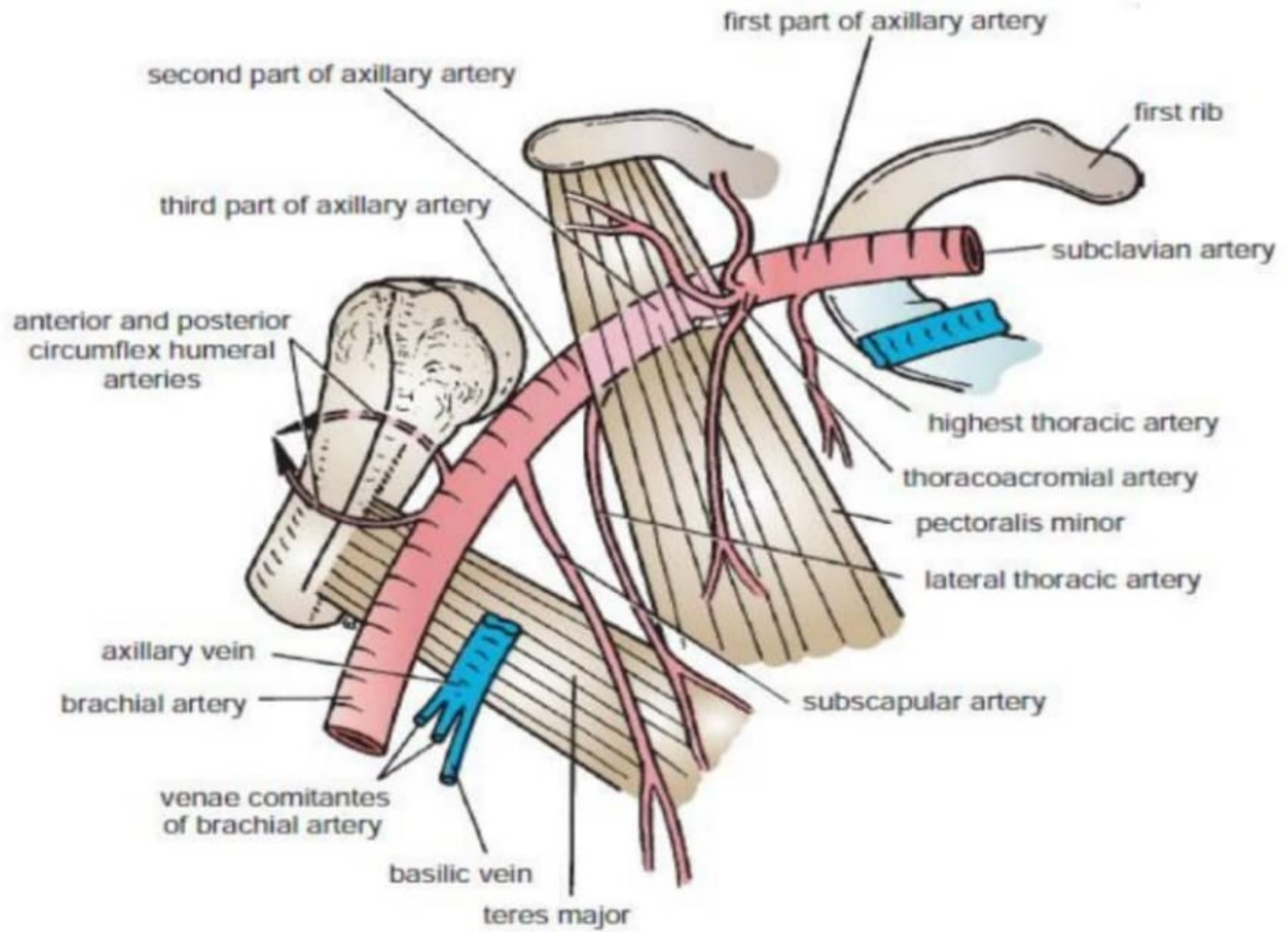
superior surface

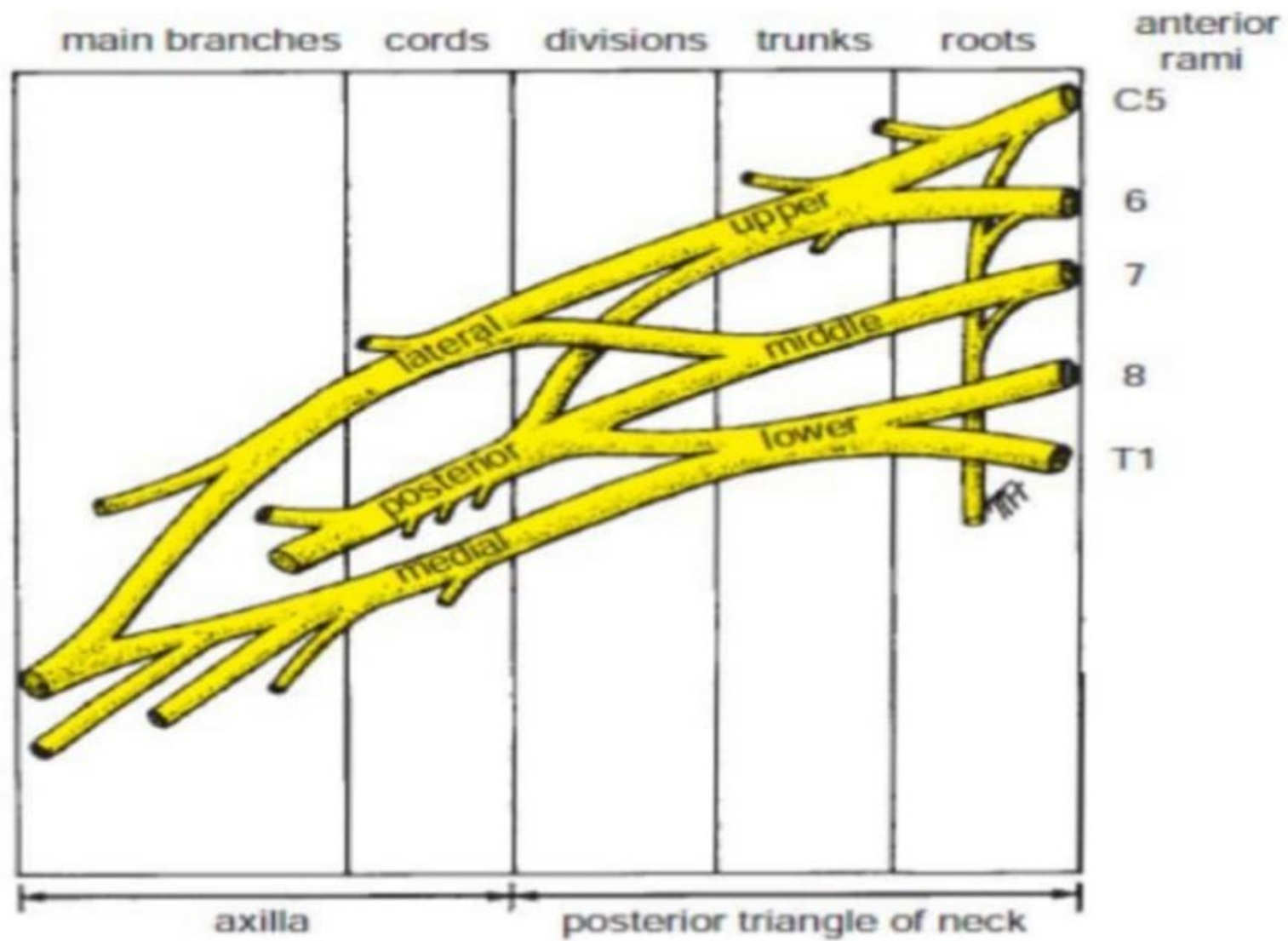
articular surface for acromium



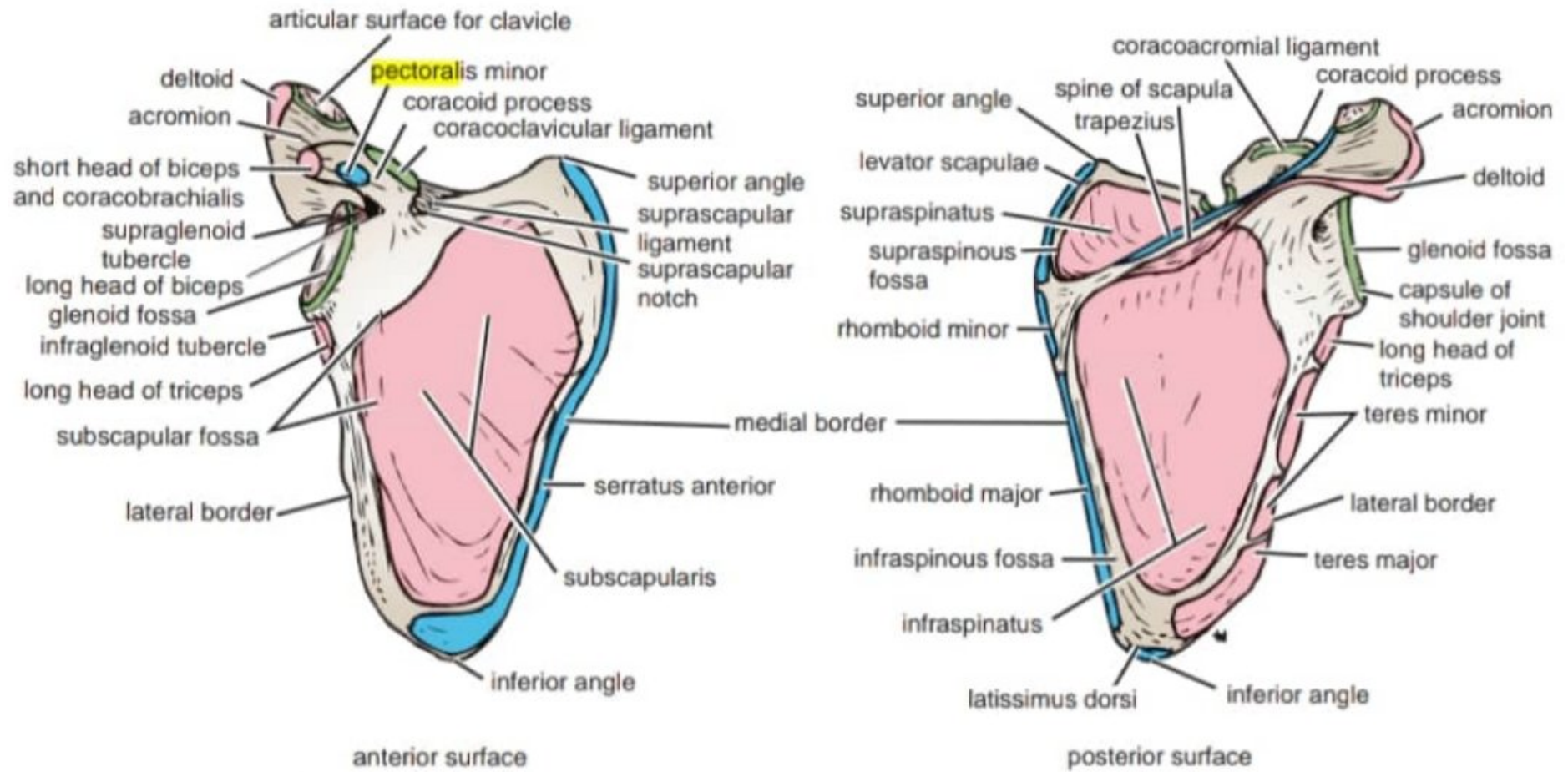
inferior surface

**FIGURE 9.6** Important muscular and ligamentous attachments to the right clavicle.

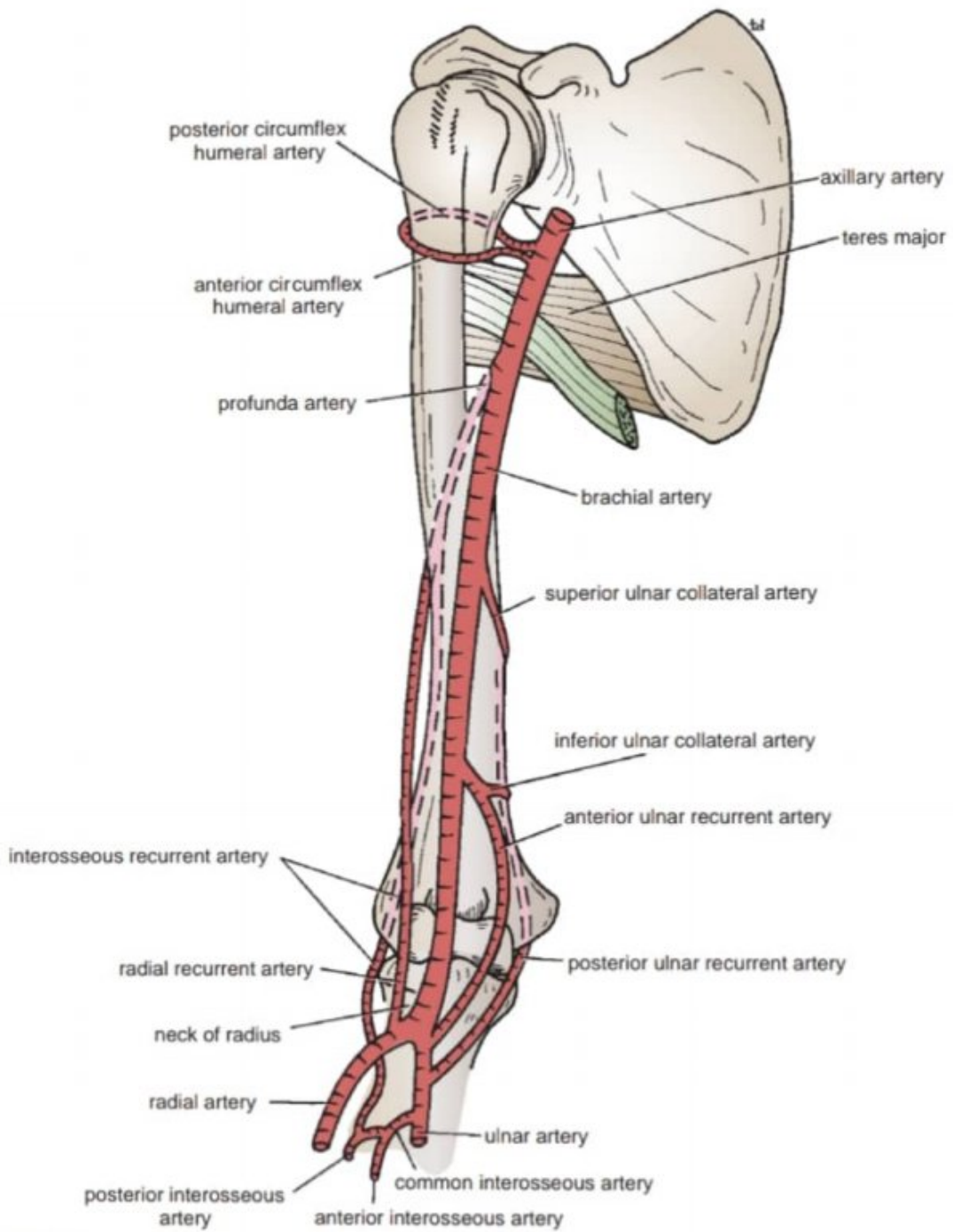




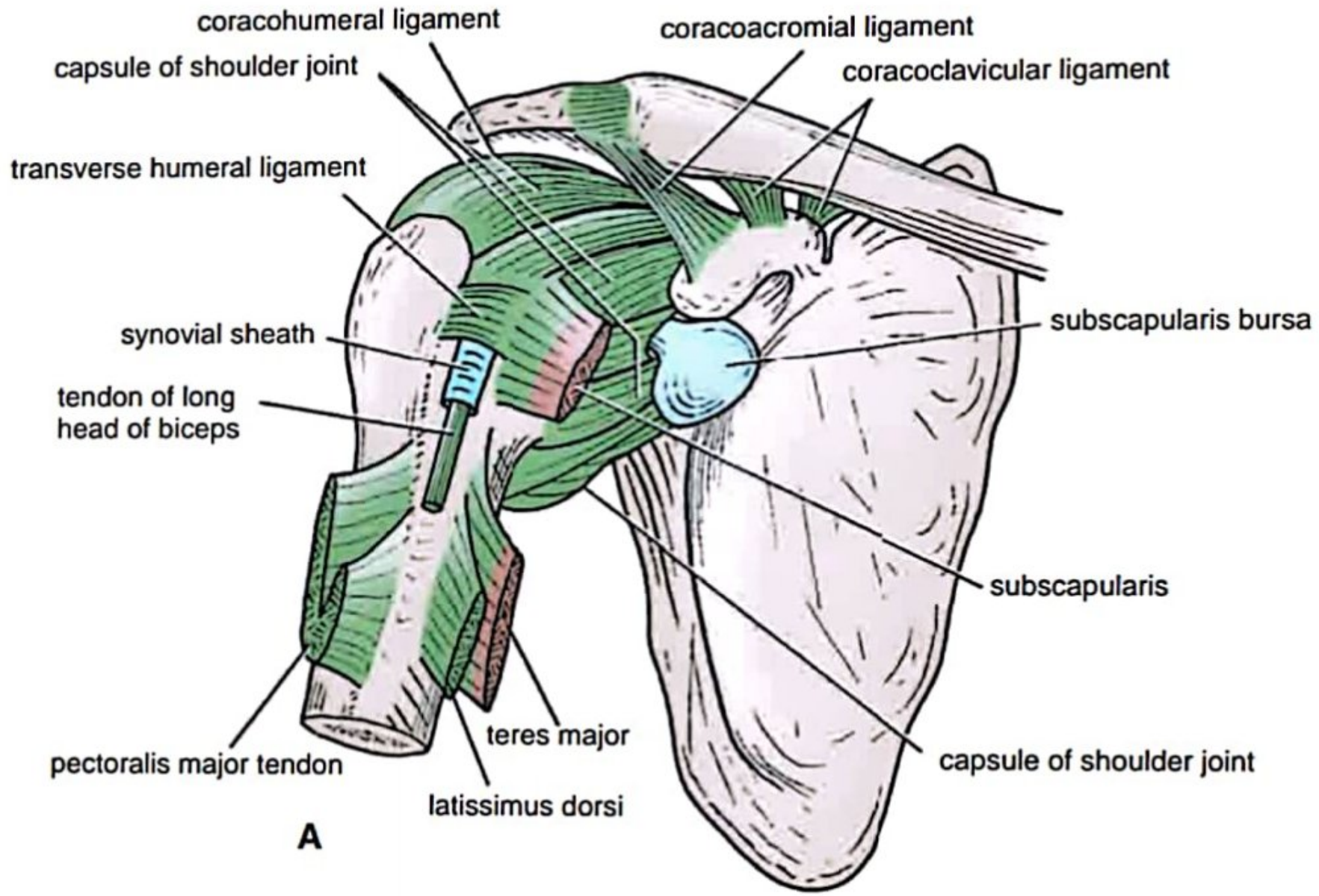
**FIGURE 9.18** The formation of the main parts of the brachial plexus. Note the locations of the different parts.



**FIGURE 9.7** Important muscular and ligamentous attachments to the right scapula.

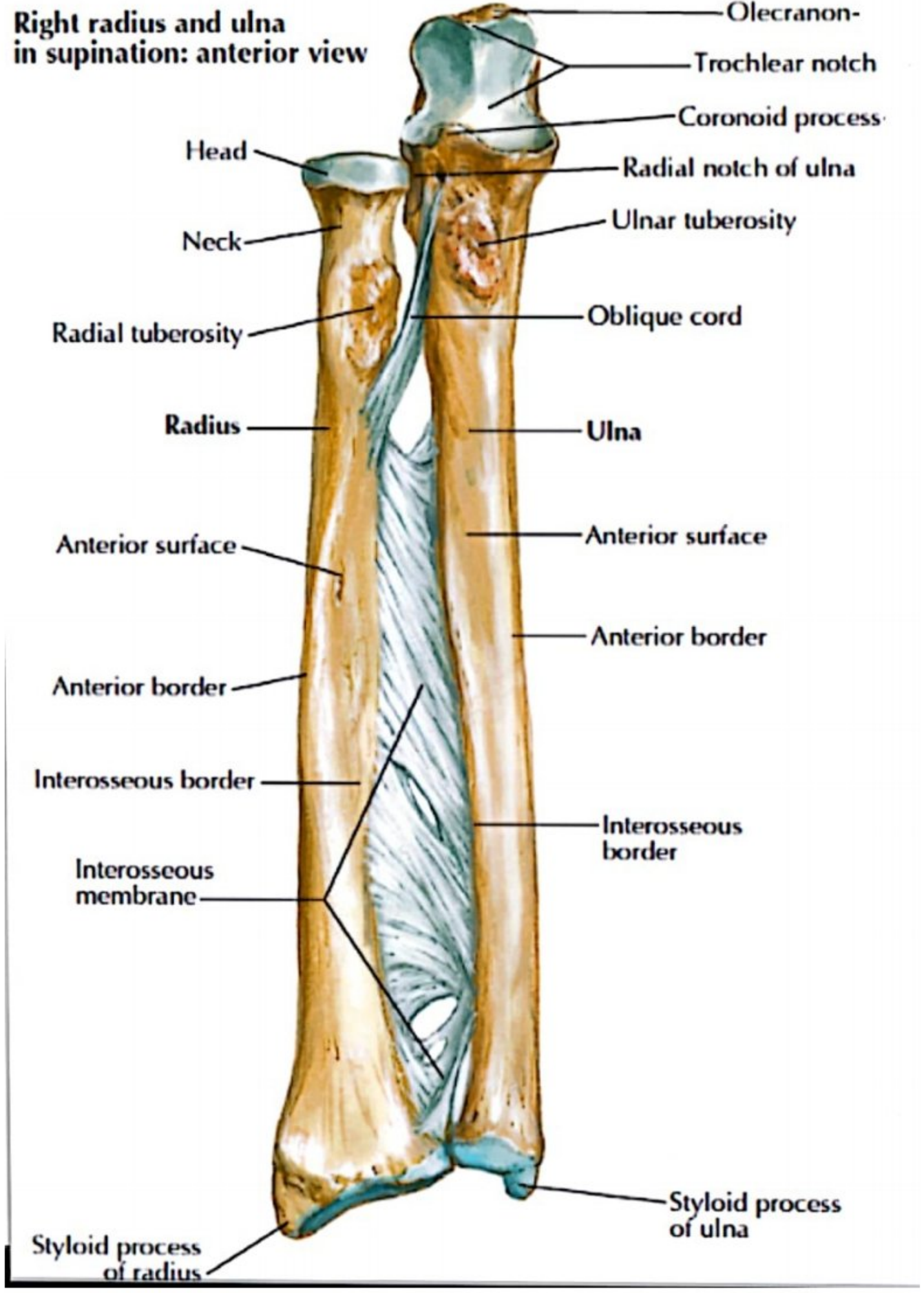


**FIGURE 9.45** Main arteries of the upper arm. Note the arterial anastomosis around the elbow joint.

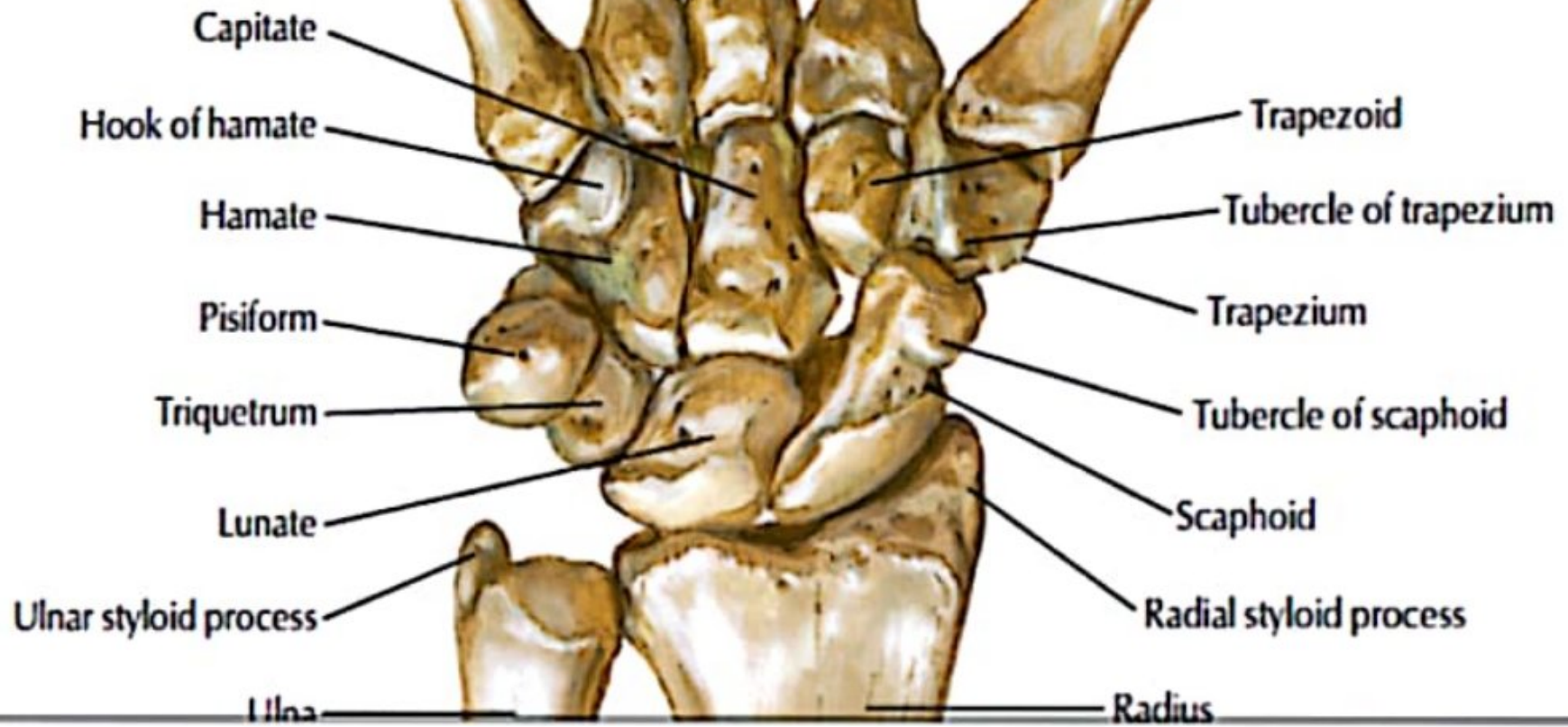


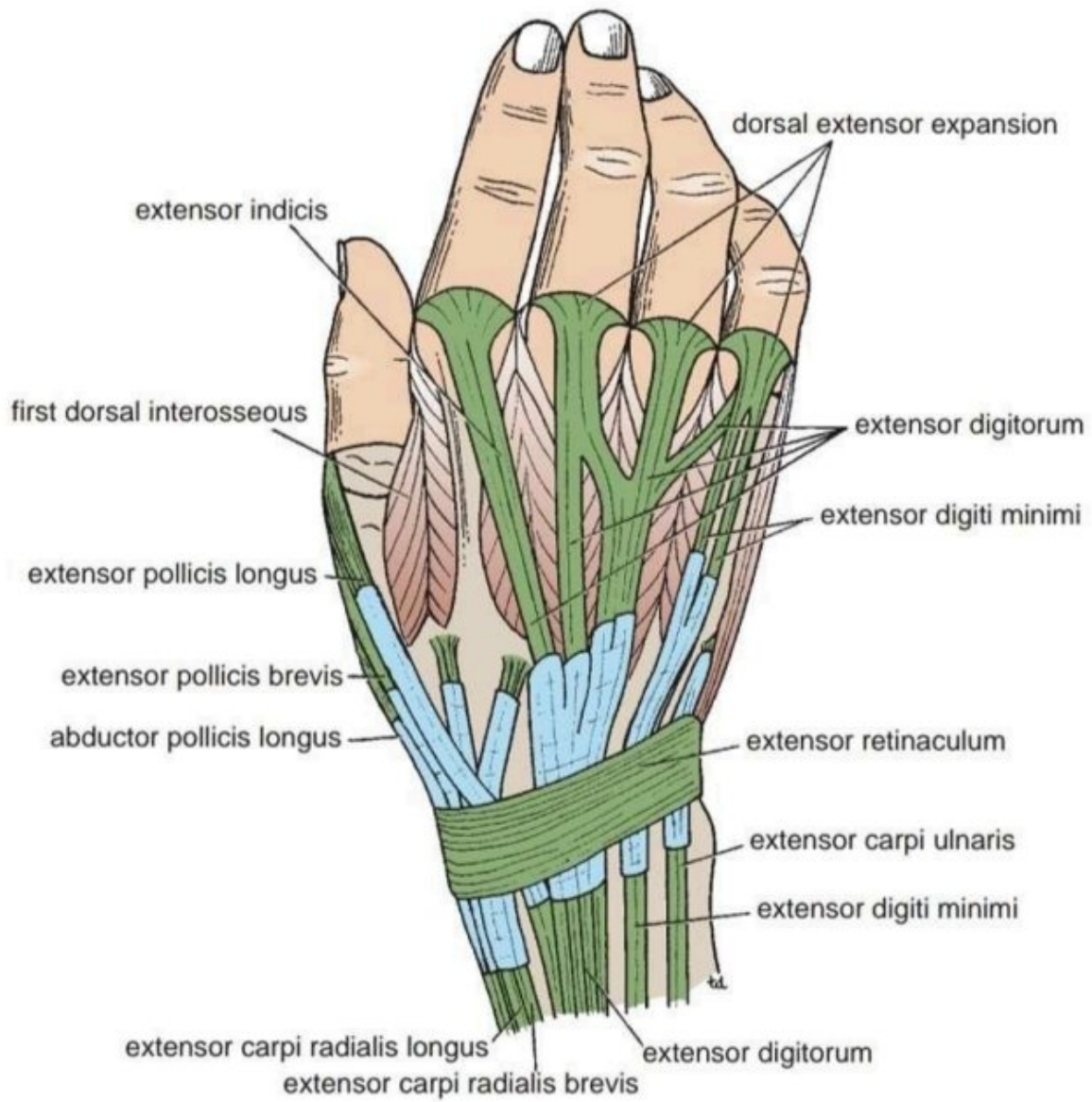
A

**Right radius and ulna  
in supination: anterior view**

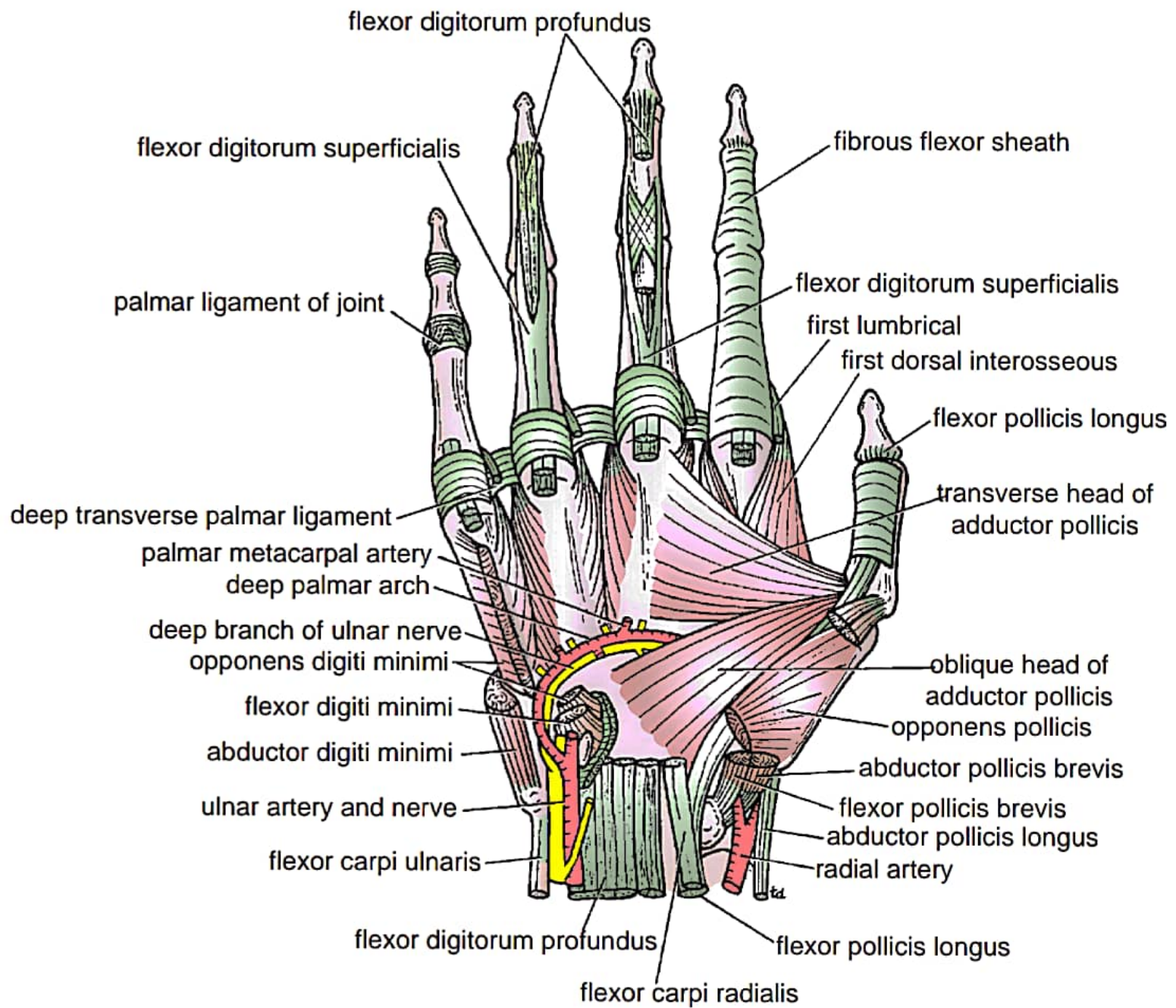


Anterior (palmar) view





**FIGURE 9.56** Dorsal surface of the hand showing the long extensor tendons and their synovial sheaths.

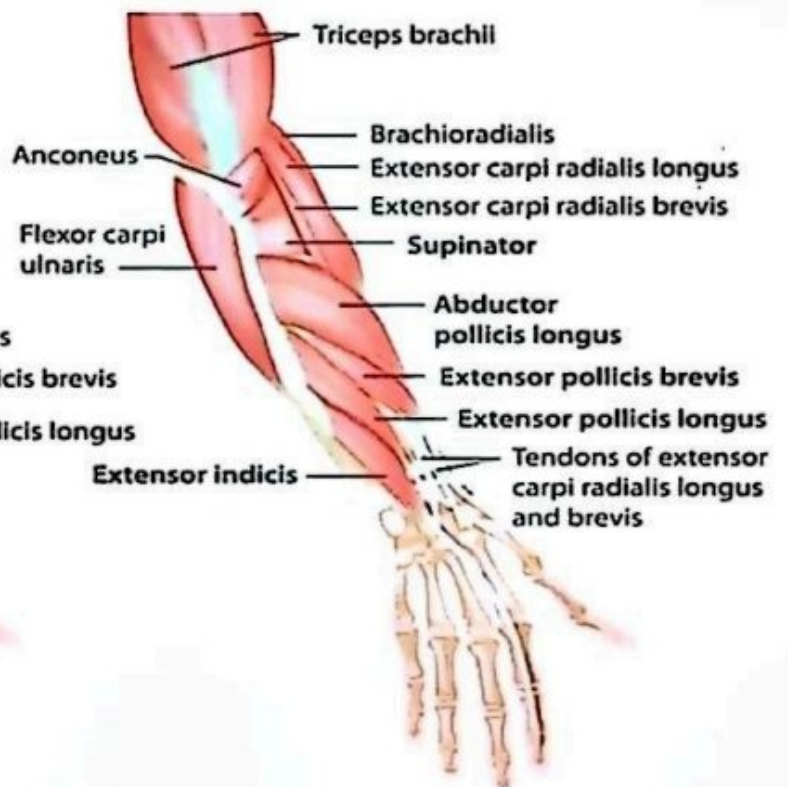


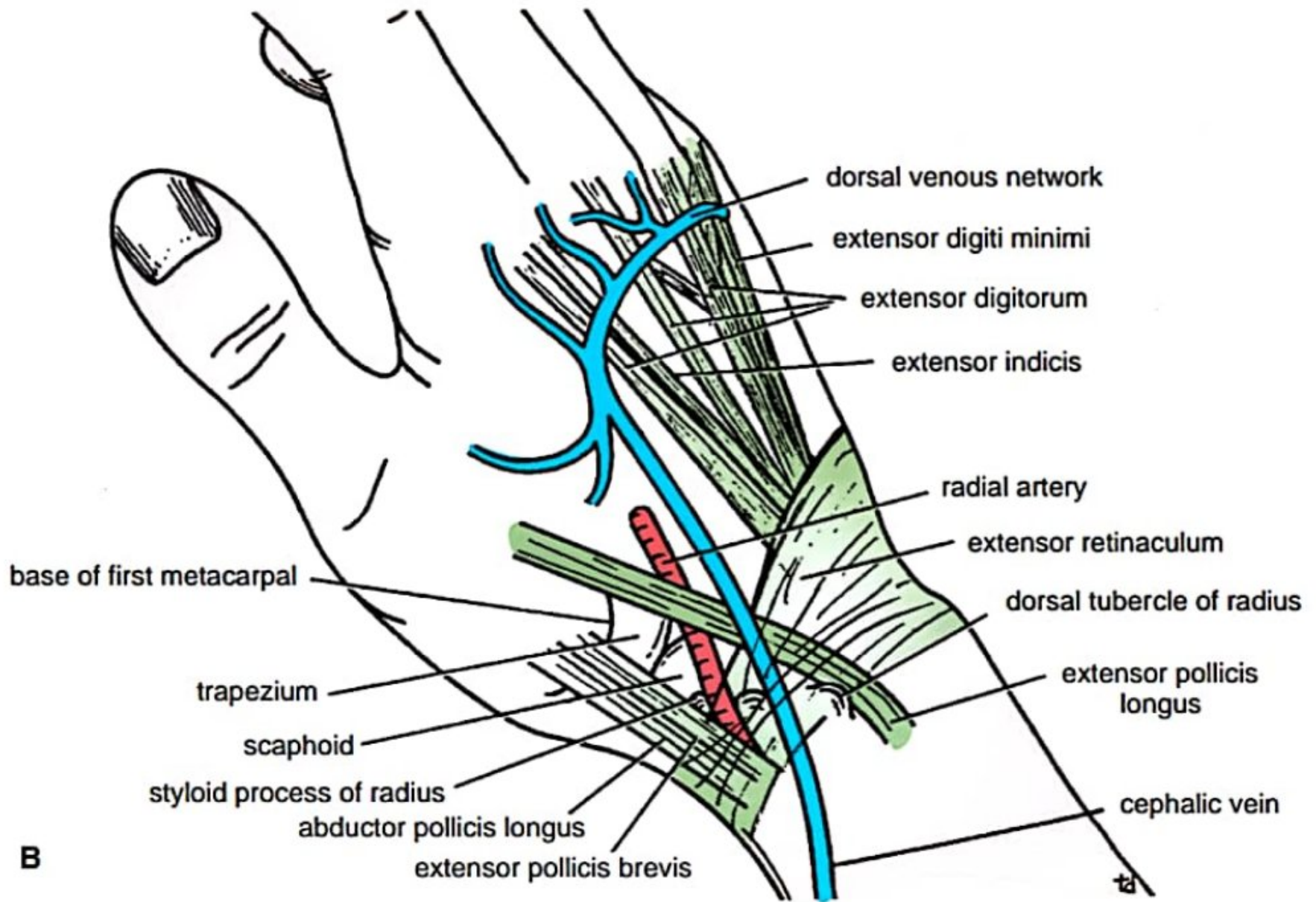
**FIGURE 9.67** Anterior view of the palm of the hand. The long flexor tendons have been removed from the palm, but their method of insertion into the fingers is shown.

## Superficial

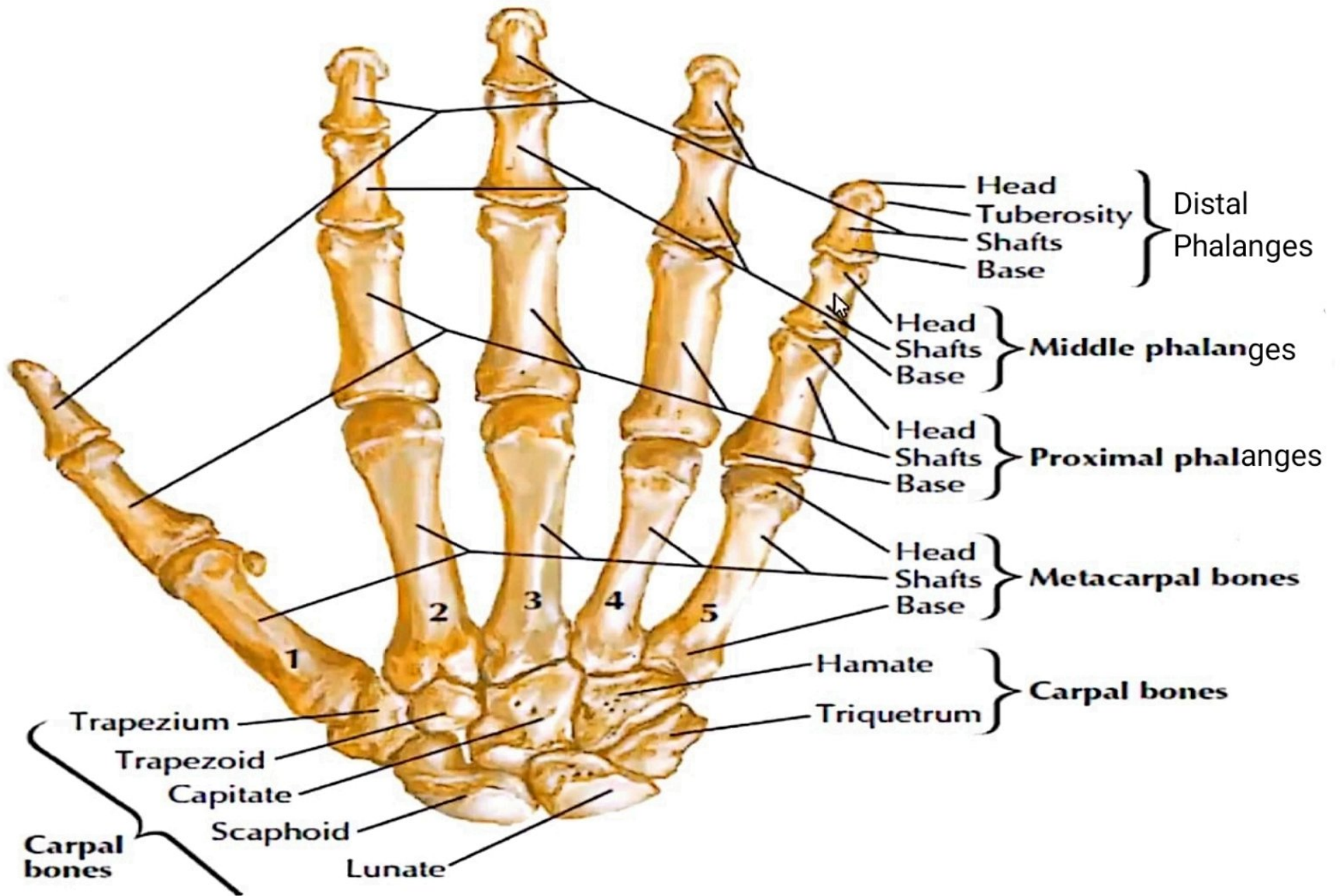


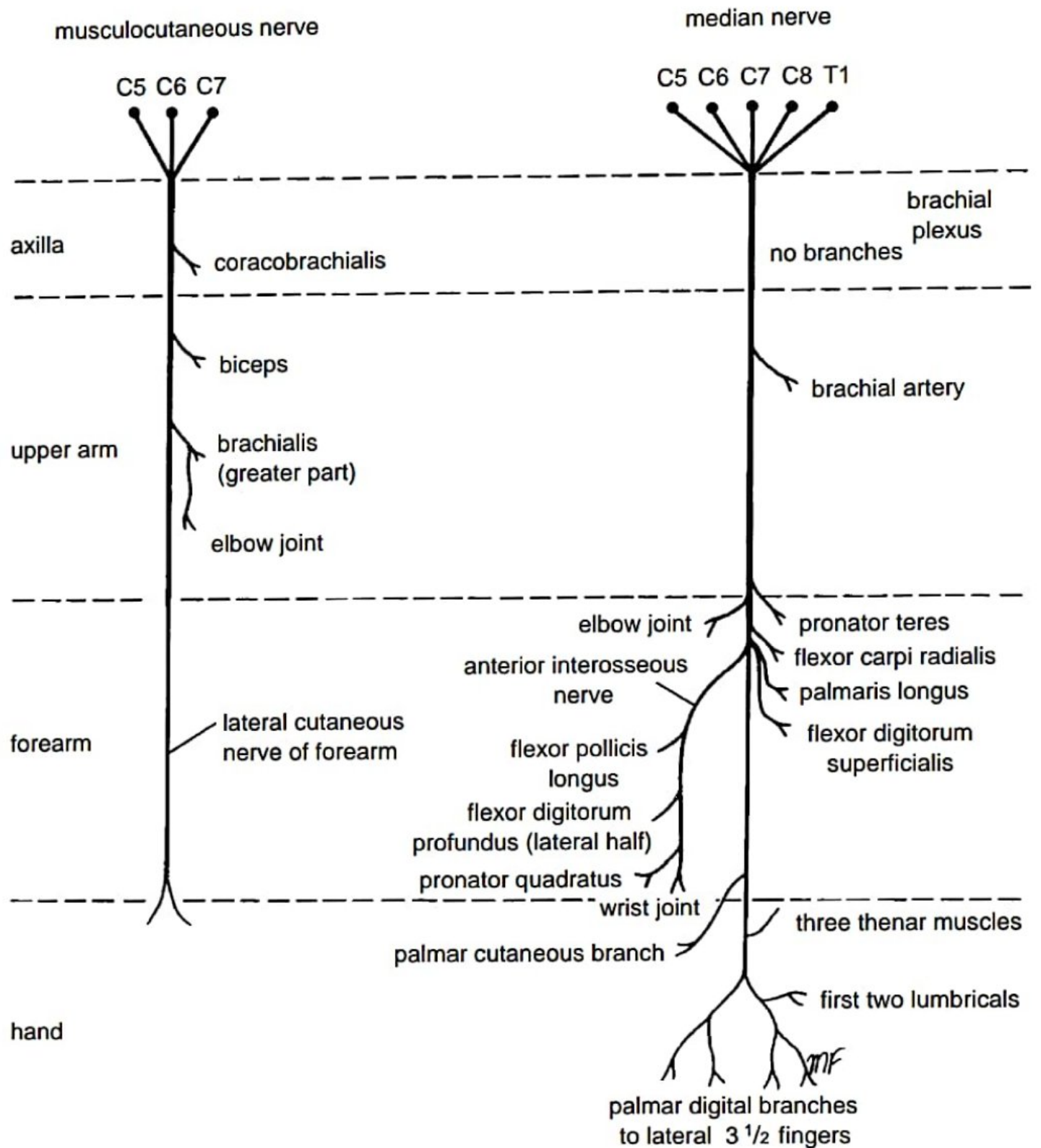
## Deep



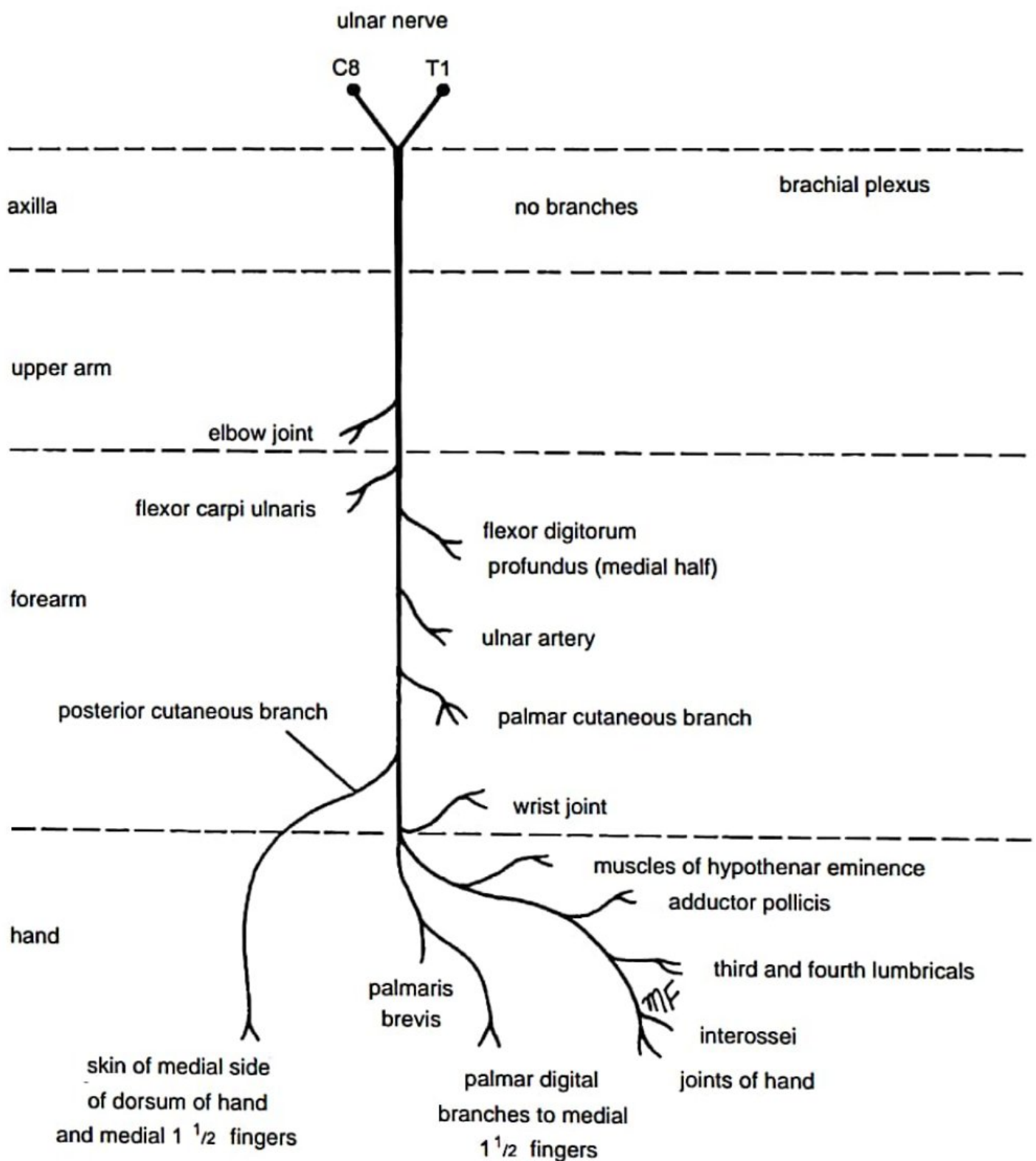


**FIGURE 9.100** Surface anatomy of the wrist region.

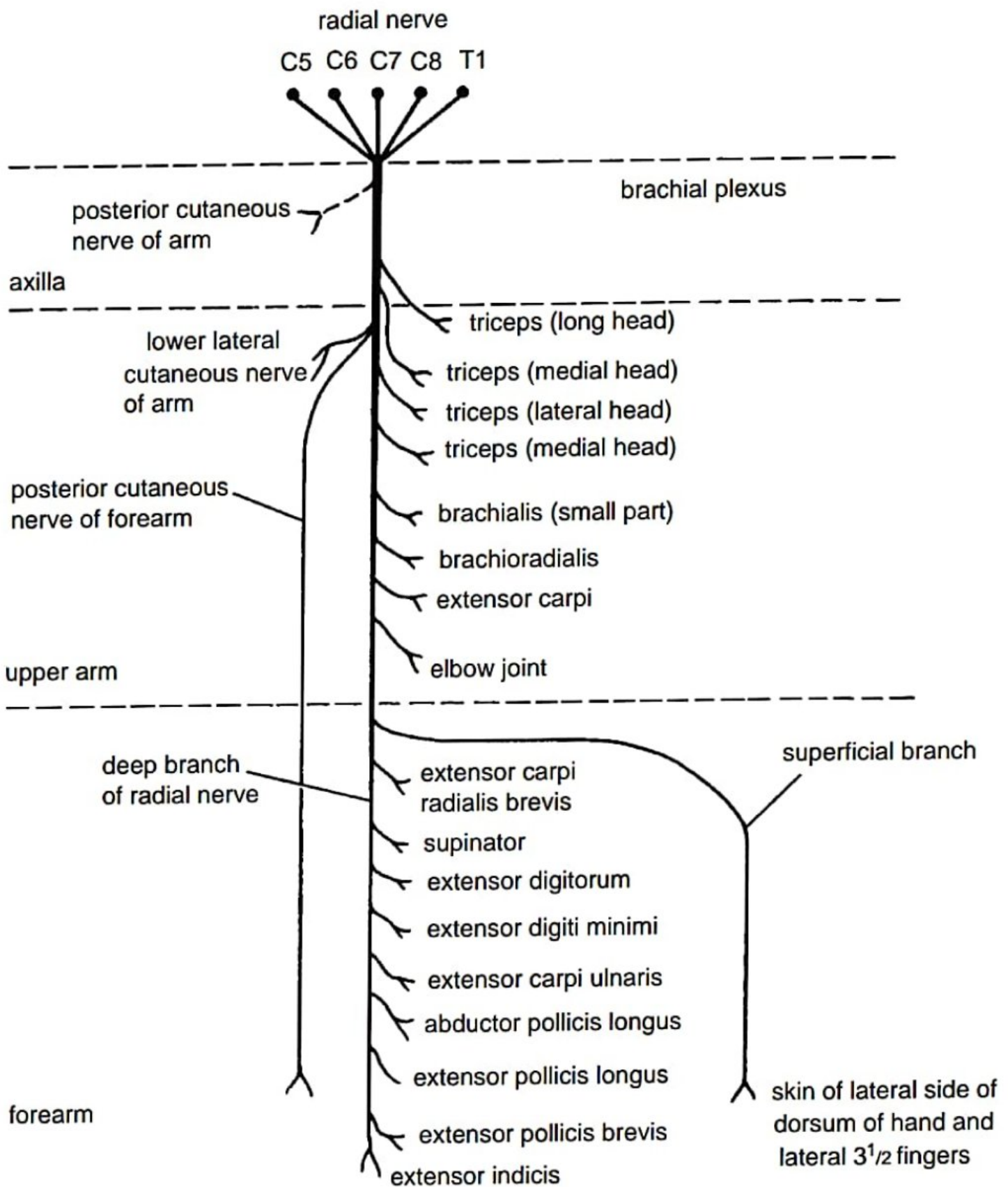




**FIGURE 9.22** Summary of the main branches of the musculocutaneous and median nerves.



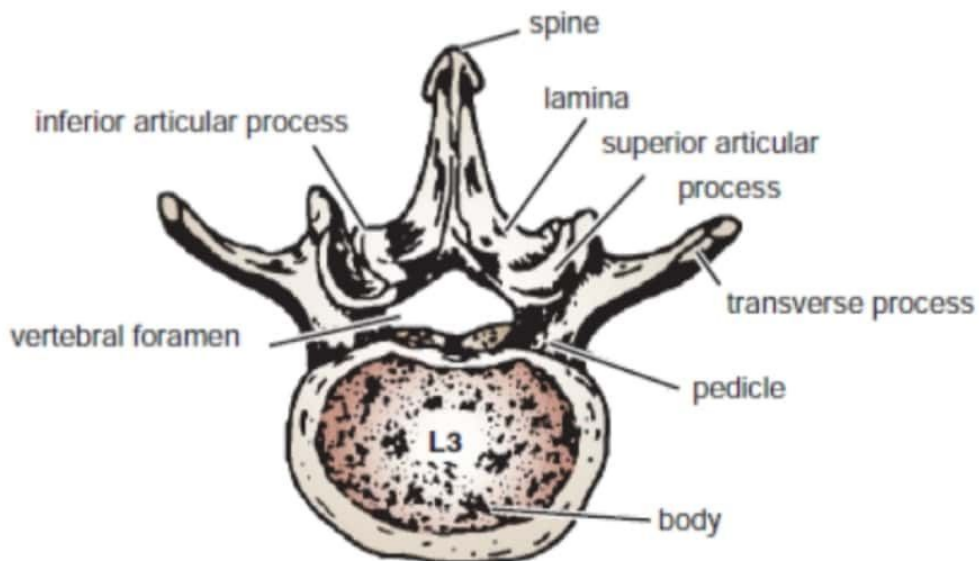
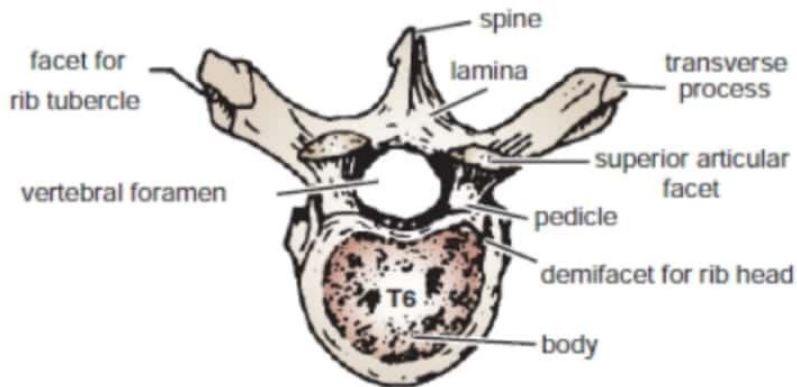
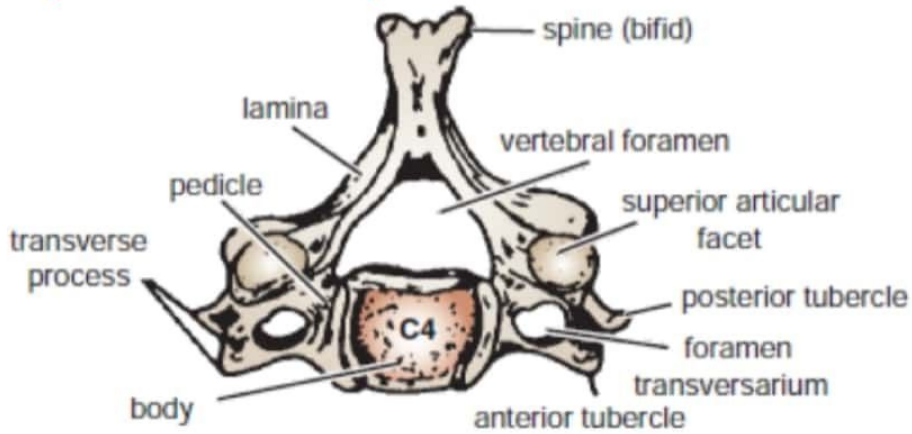
**FIGURE 9.23** Summary of the main branches of the ulnar nerve.



**FIGURE 9.25** Summary of the main branches of the radial nerve.

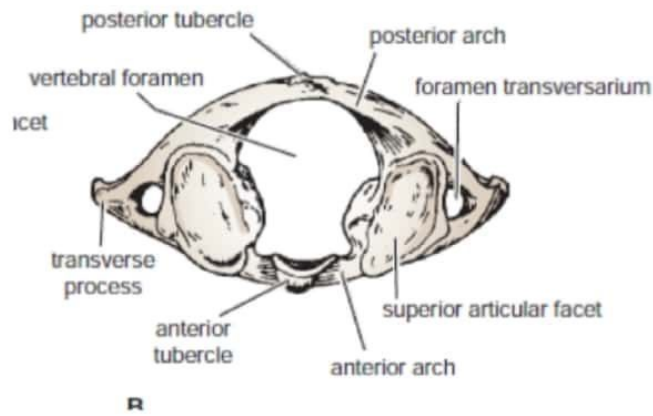
# TYPICAL VERTEBRAES

(draw any one from three)

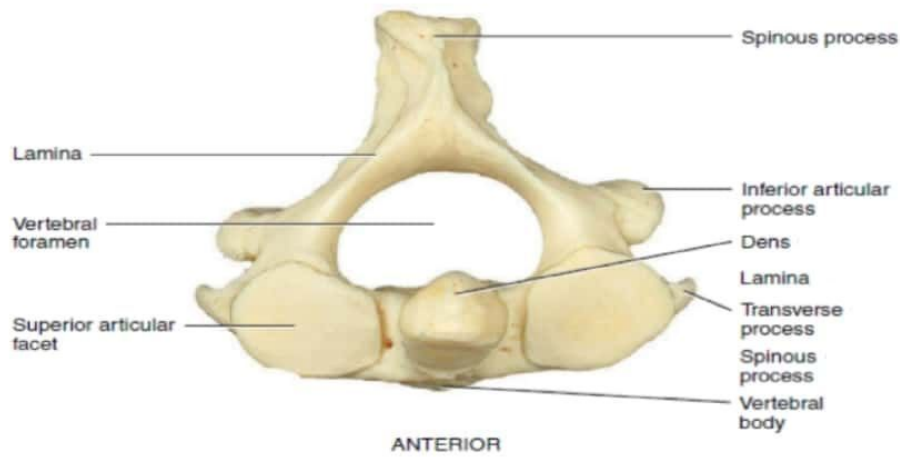


# Atlas

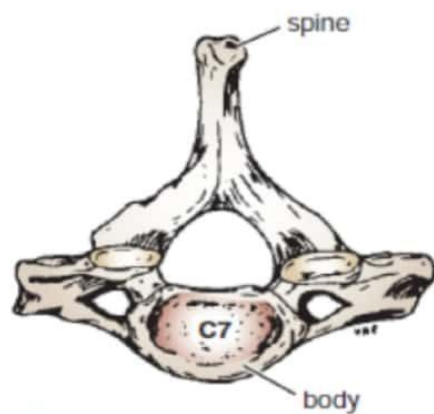
## ATYPICAL VERTEBRAES (Draw any one from three)






# Axis



# C7

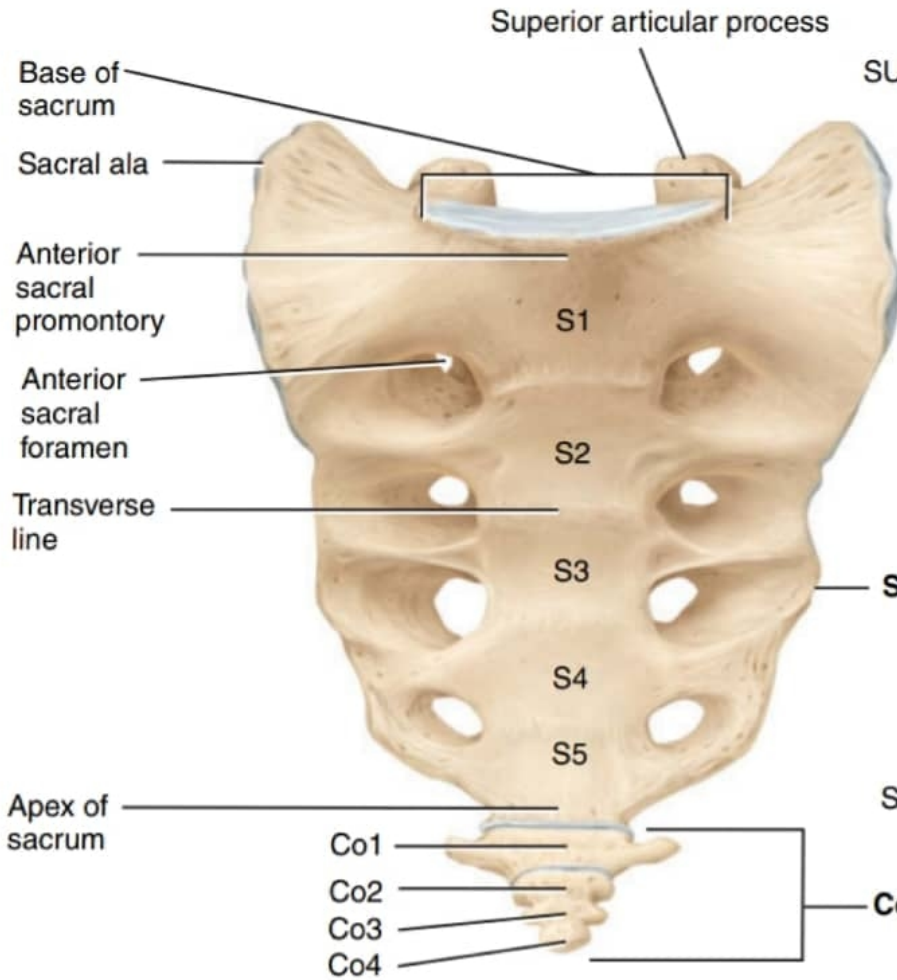


**TABLE 7.4** Comparison of Major Structural Features of Cervical, Thoracic, and Lumbar Vertebrae

CHARACTERISTIC	CERVICAL	THORACIC	LUMBAR
<b>Overall structure</b>			

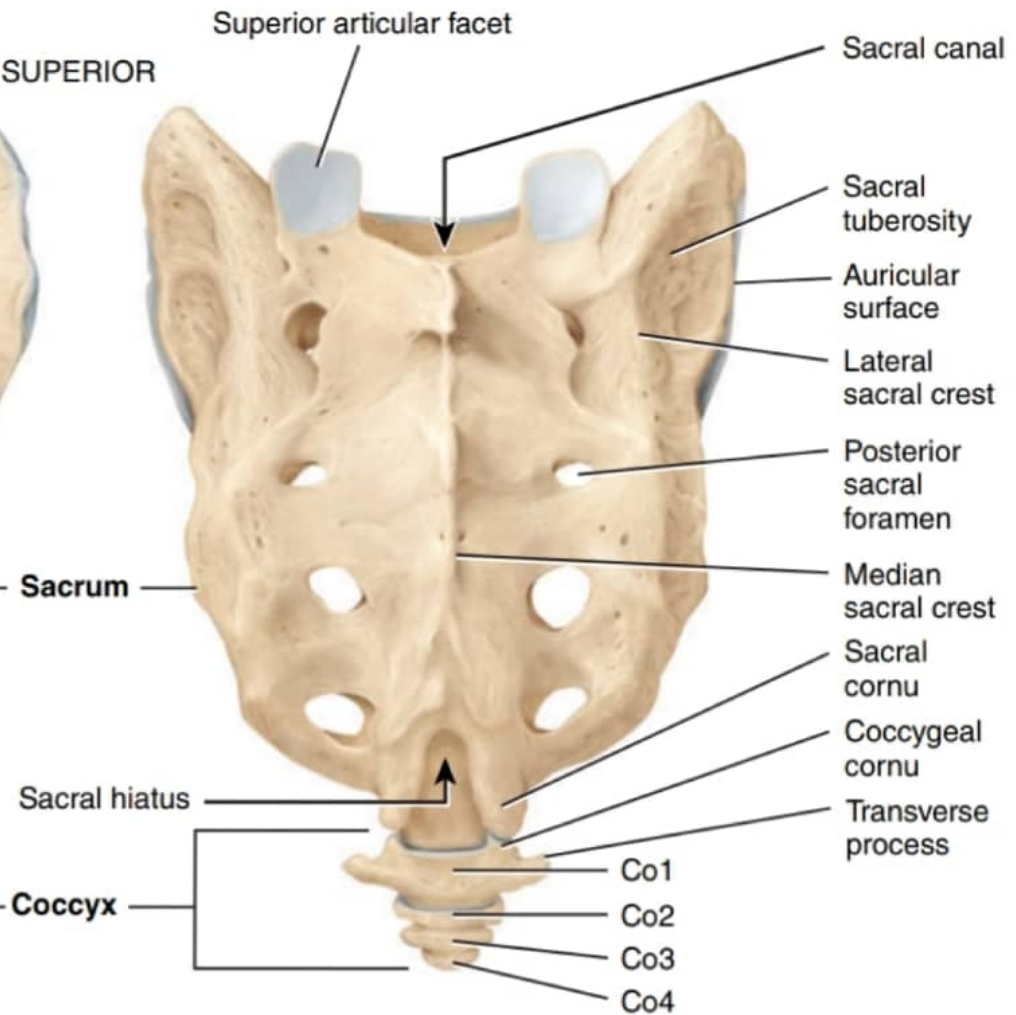
## Sacrum and coccyx.

ANTERIOR

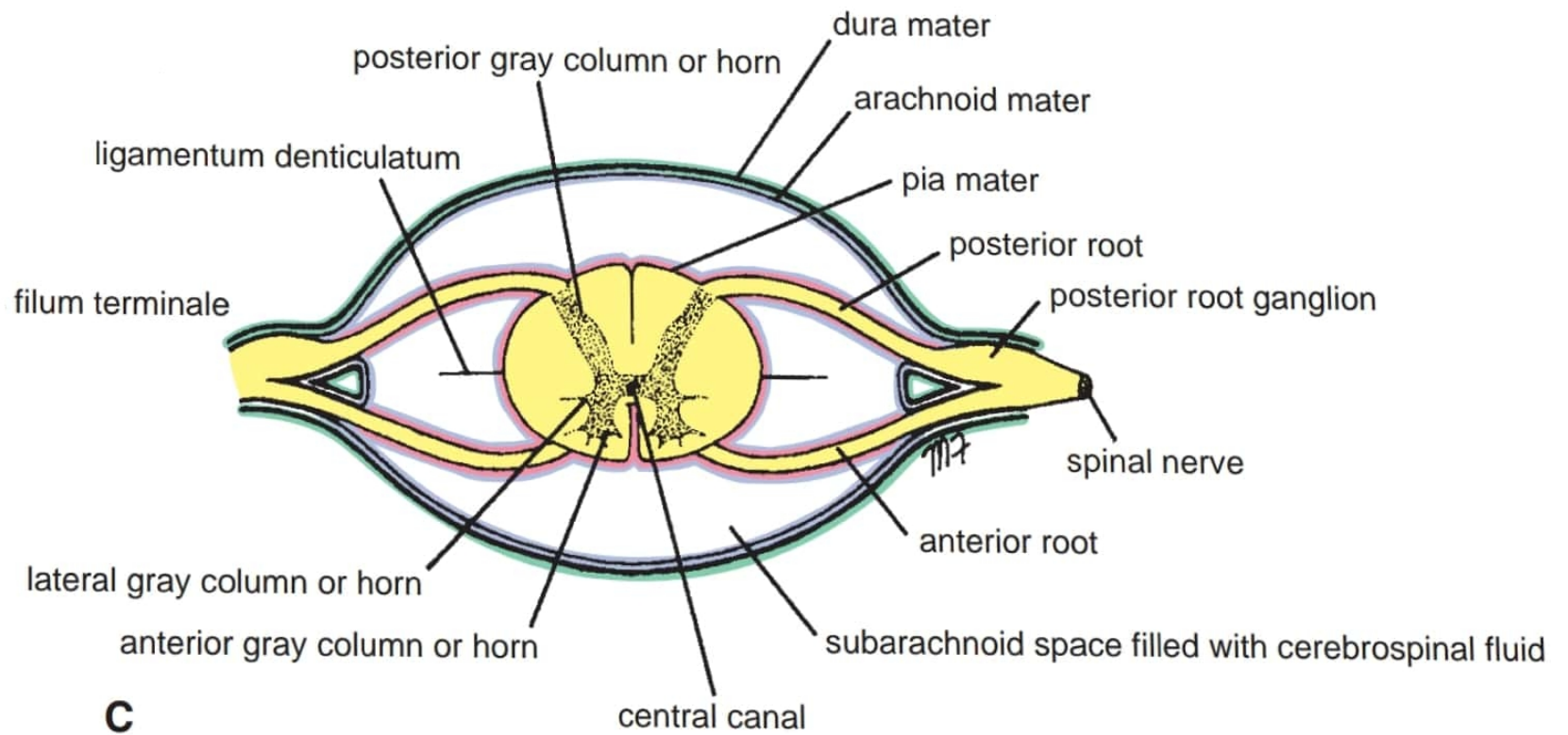


(a) Anterior view

SUPERIOR



(b) Posterior view

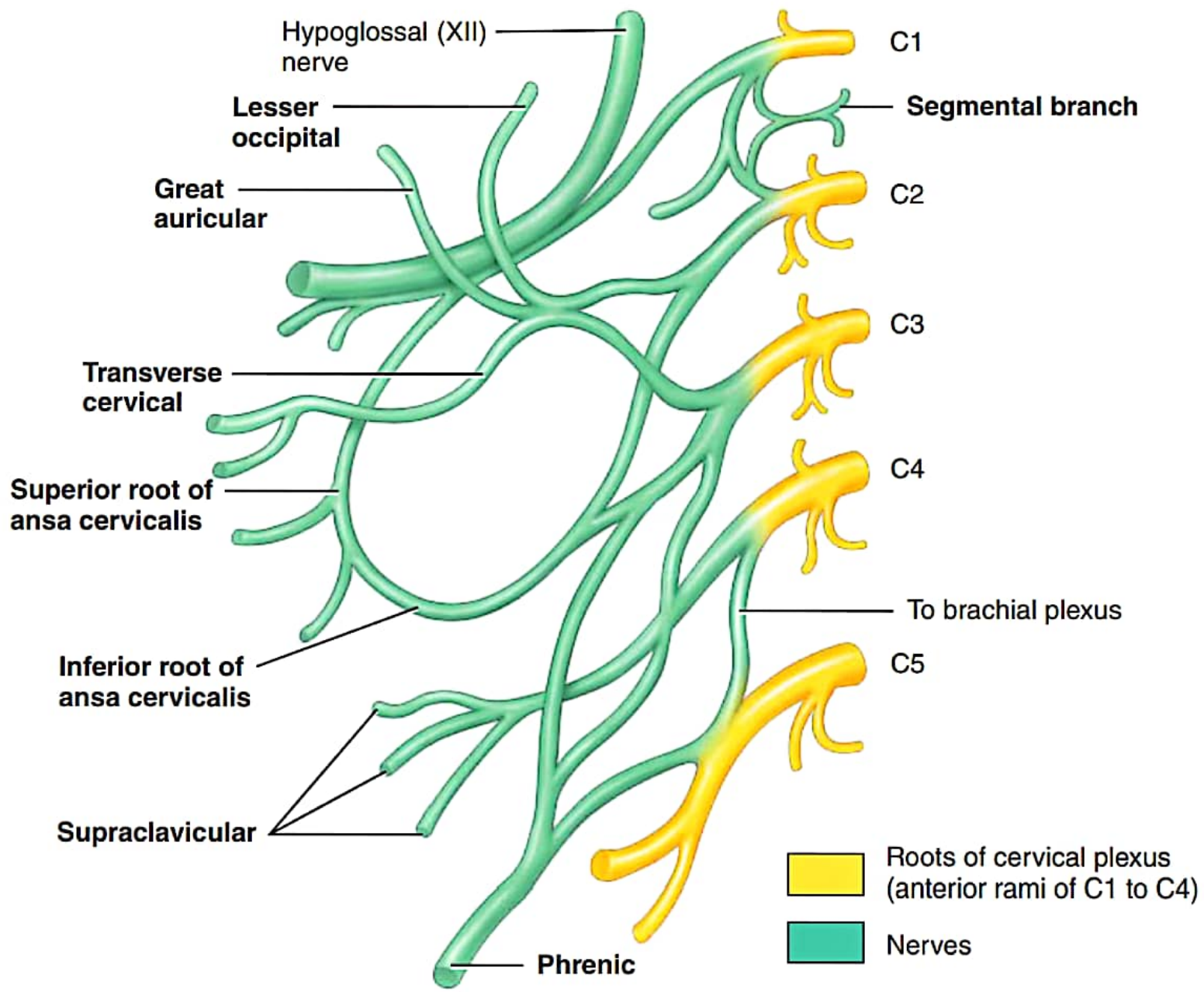


**C**

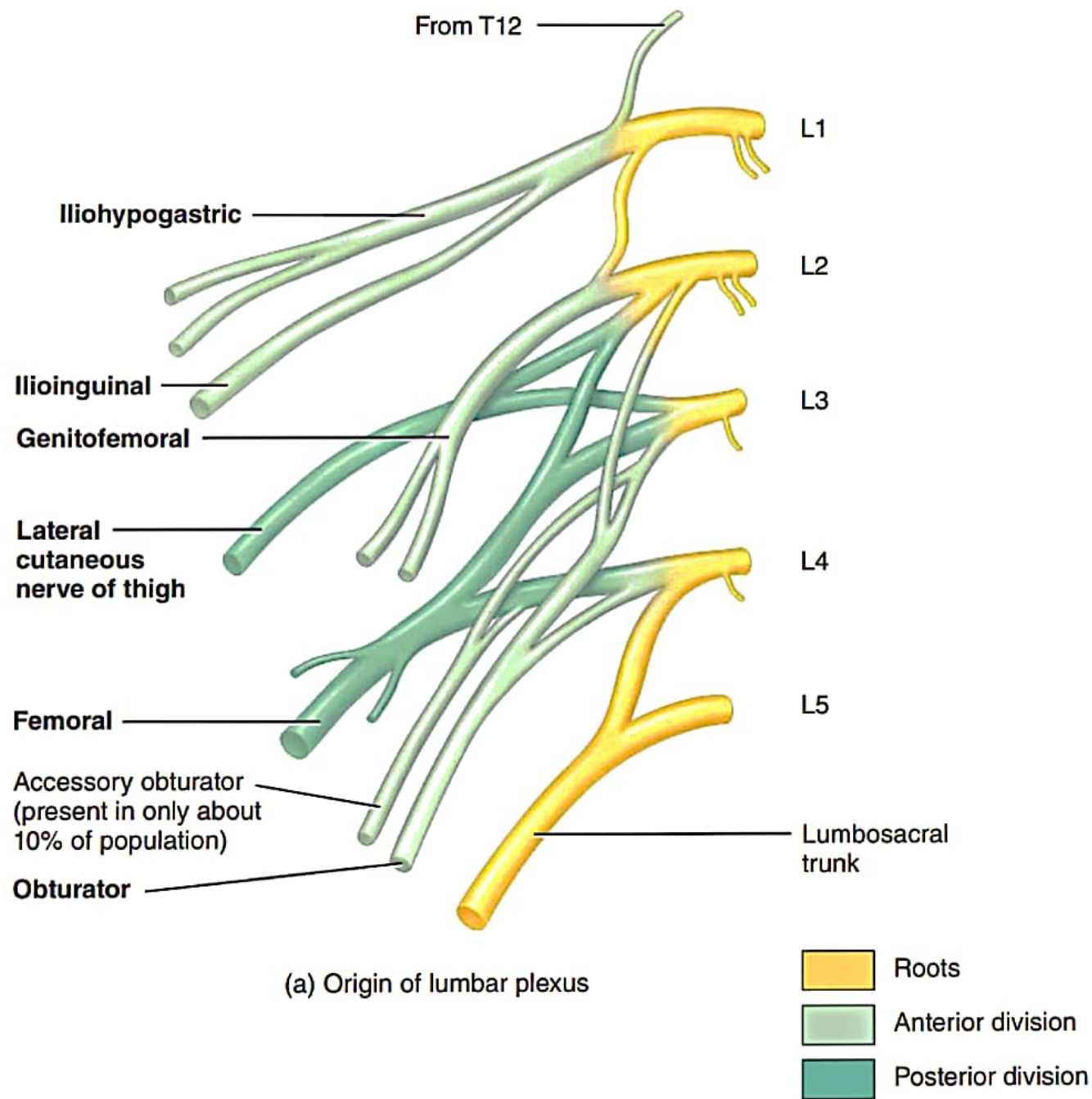
**FIGURE 12.11**

showing the meninges and the position of the cerebrospinal fluid.

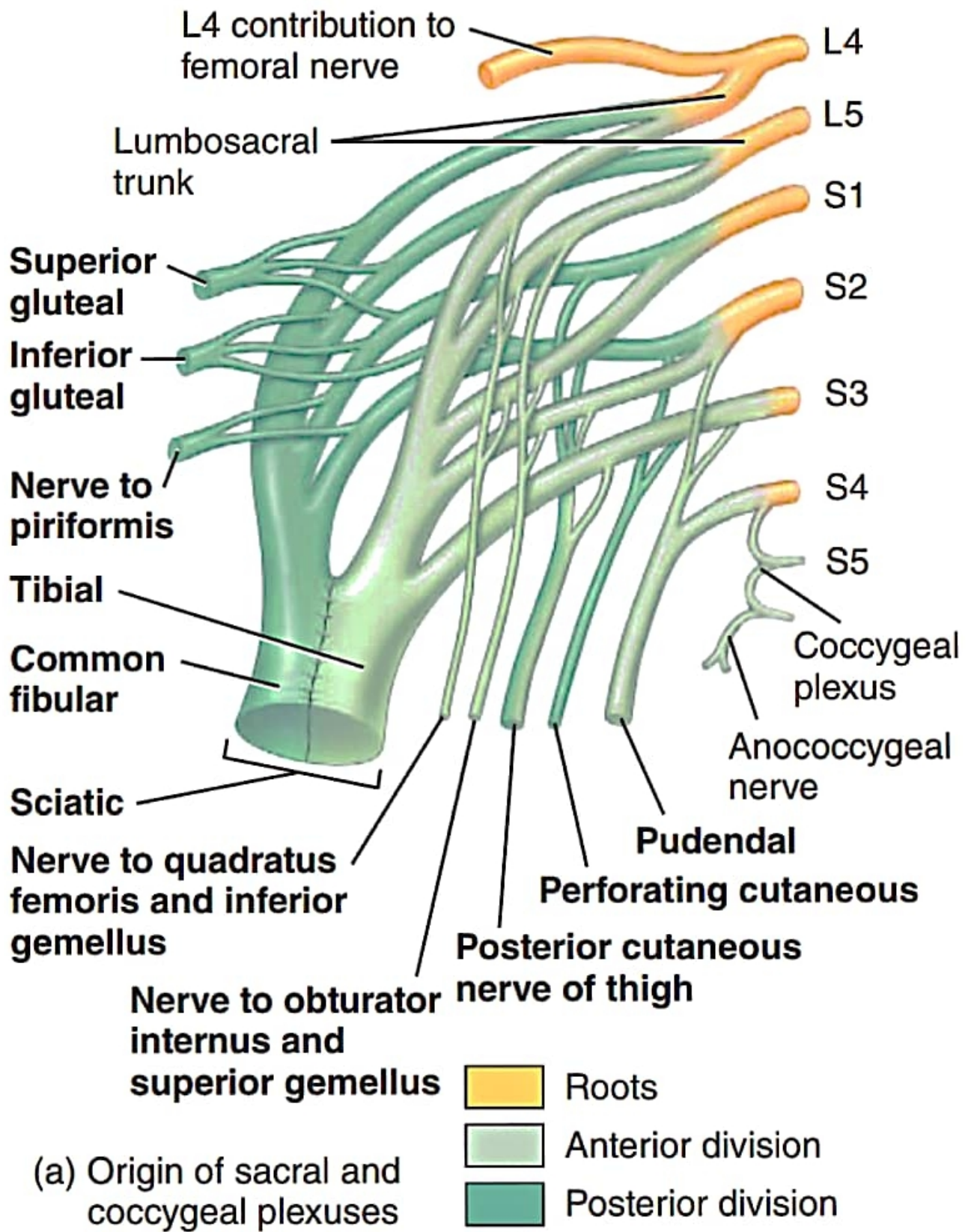
**C.** Transverse section through the spinal cord

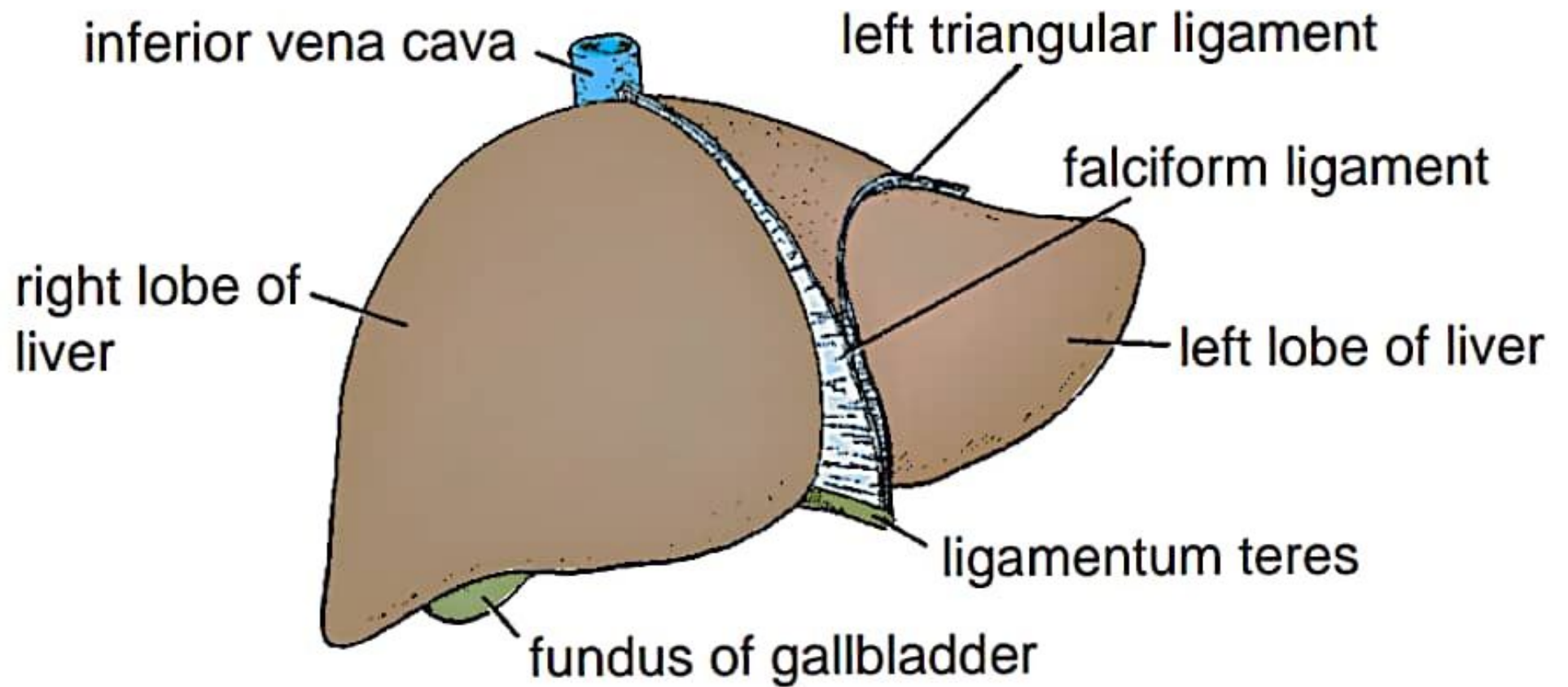


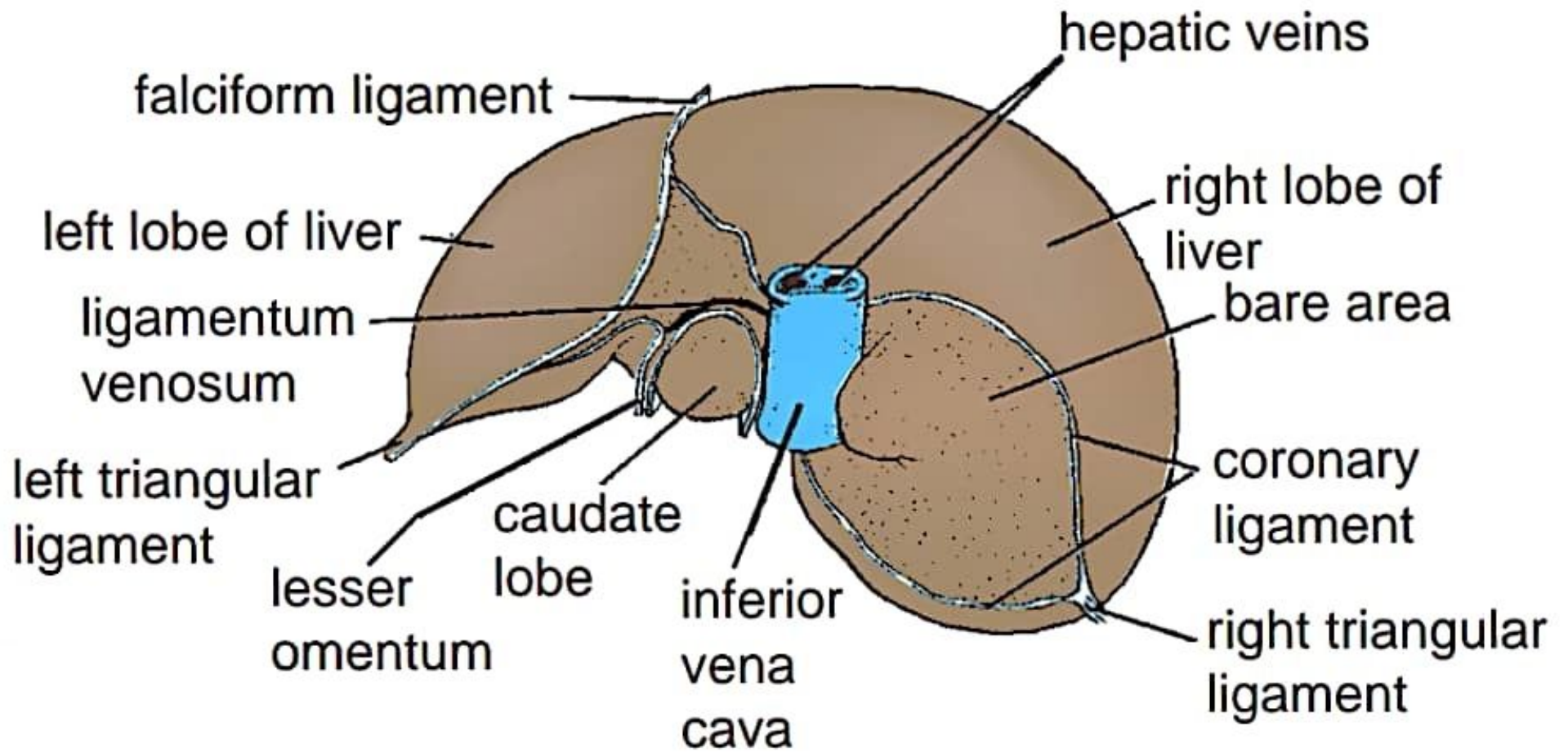
Origin of cervical plexus

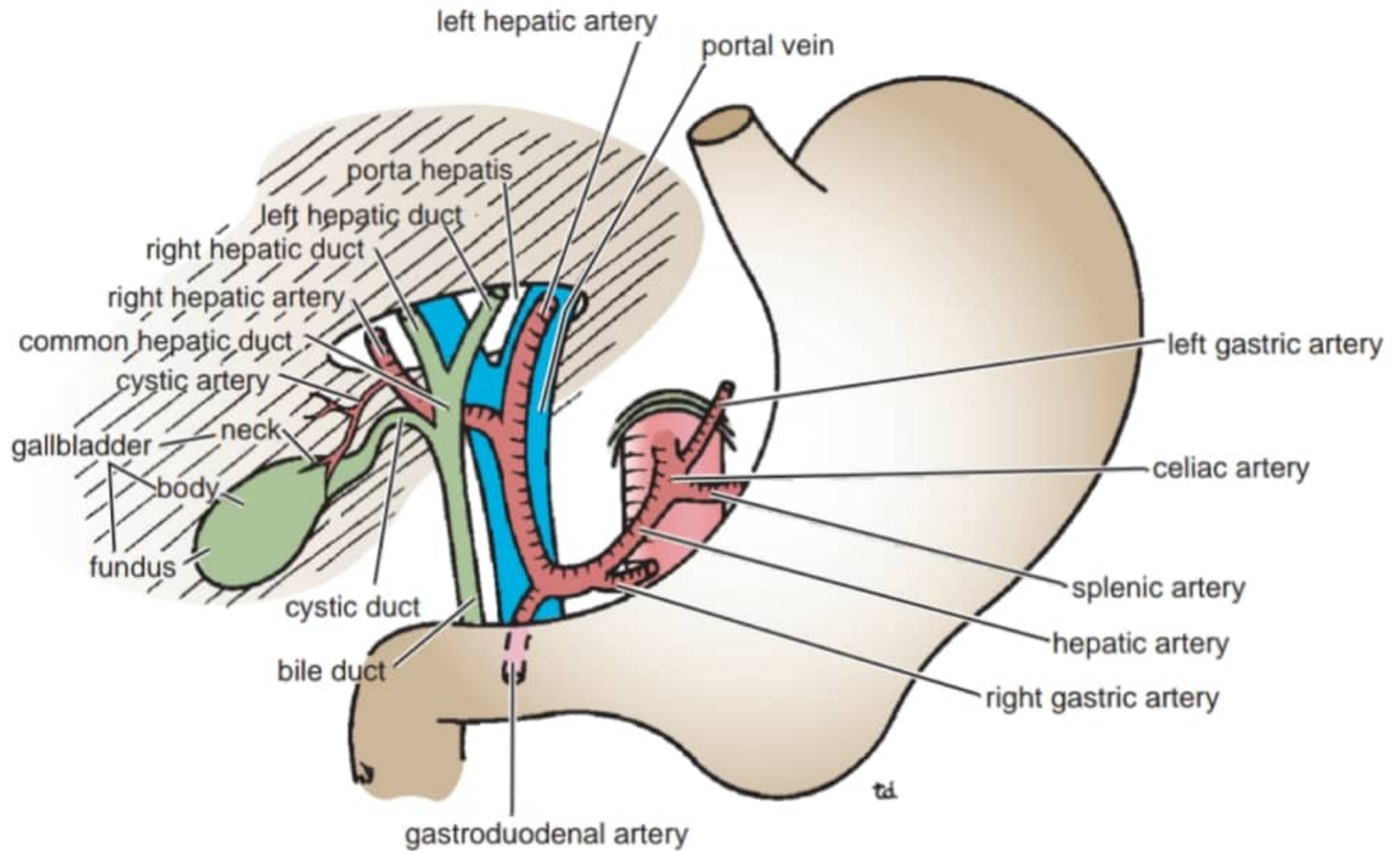


**Figure 13.10** *Continues*

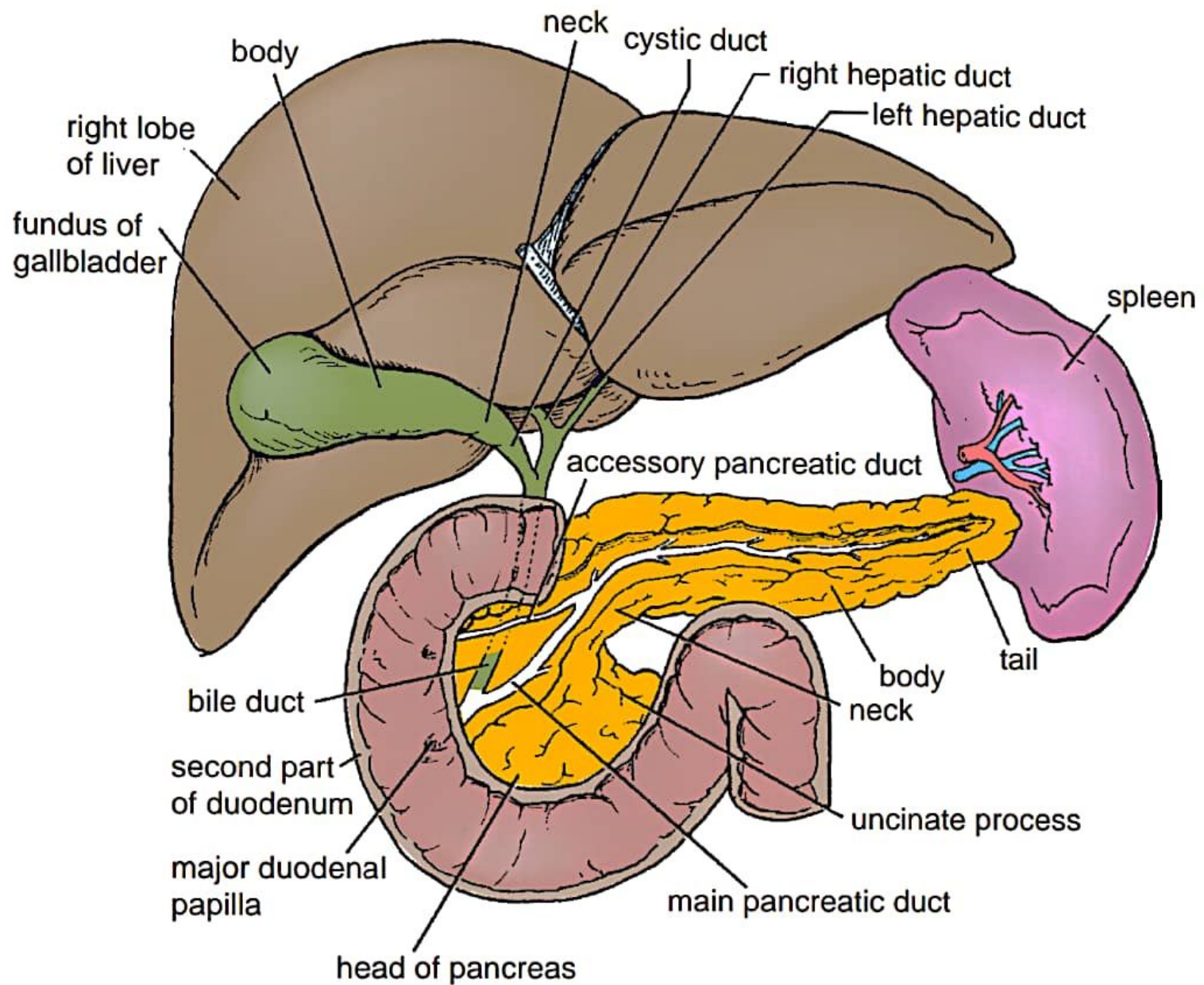






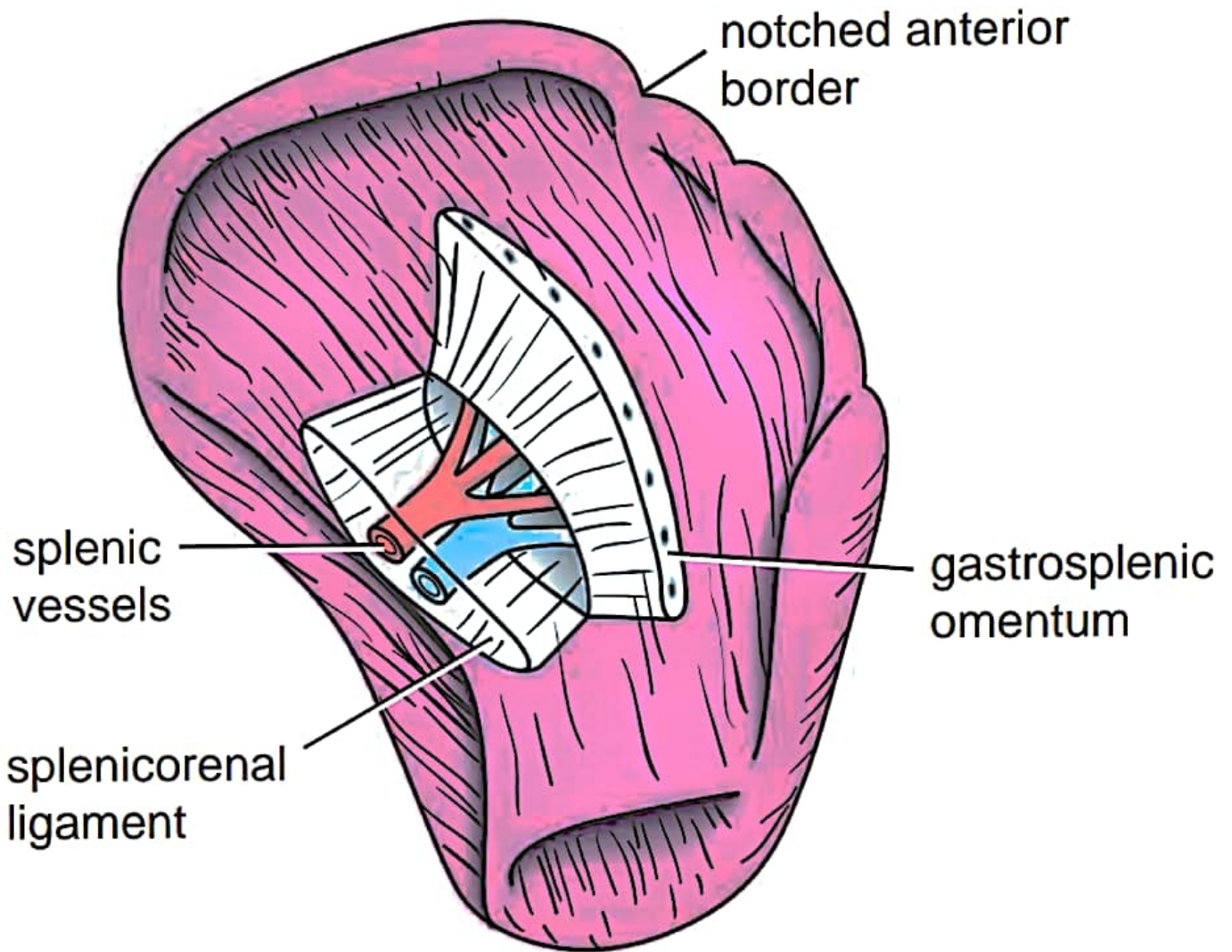


**FIGURE 5.47** Structures entering and leaving the porta hepatis.

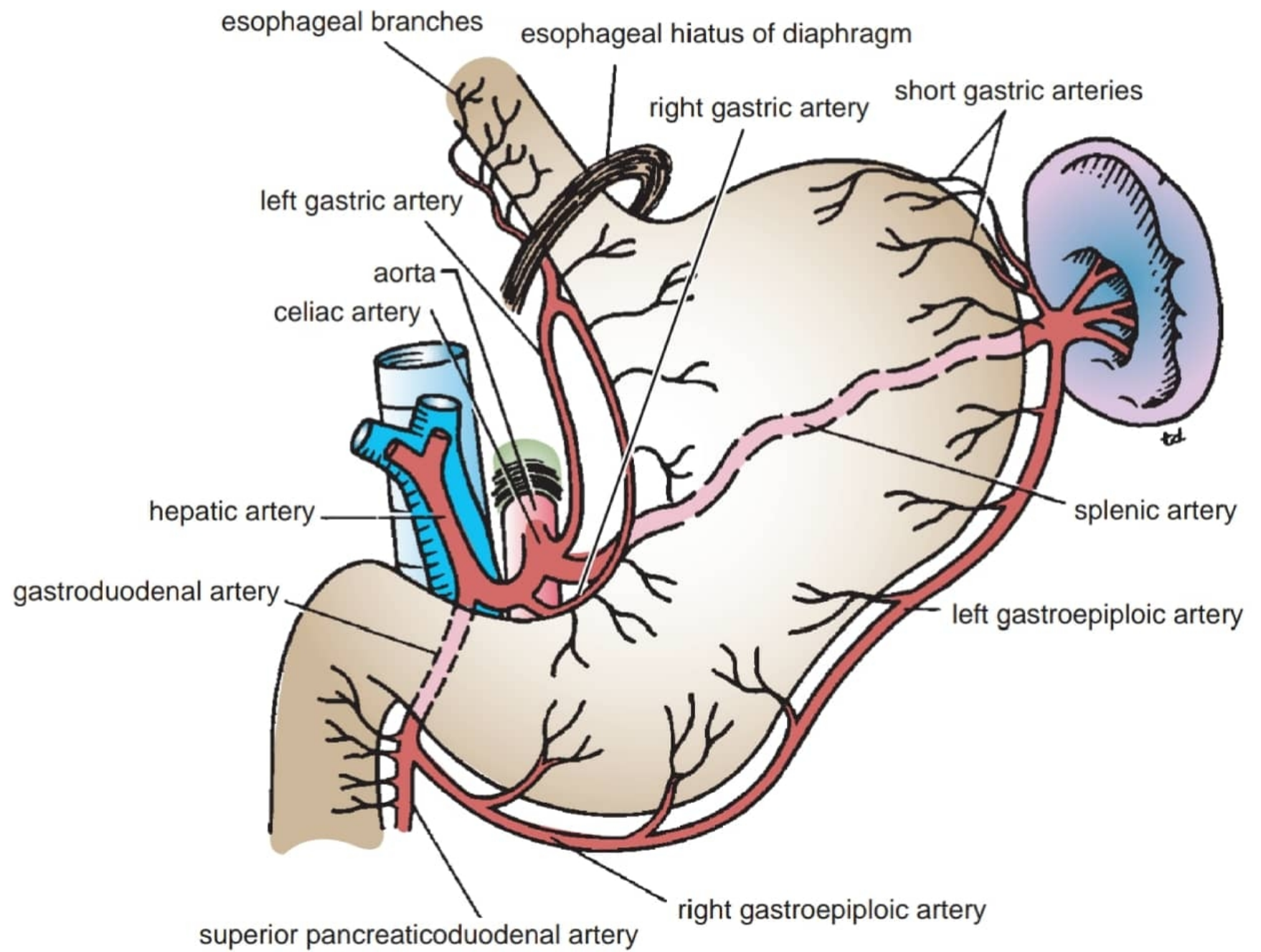


**FIGURE**

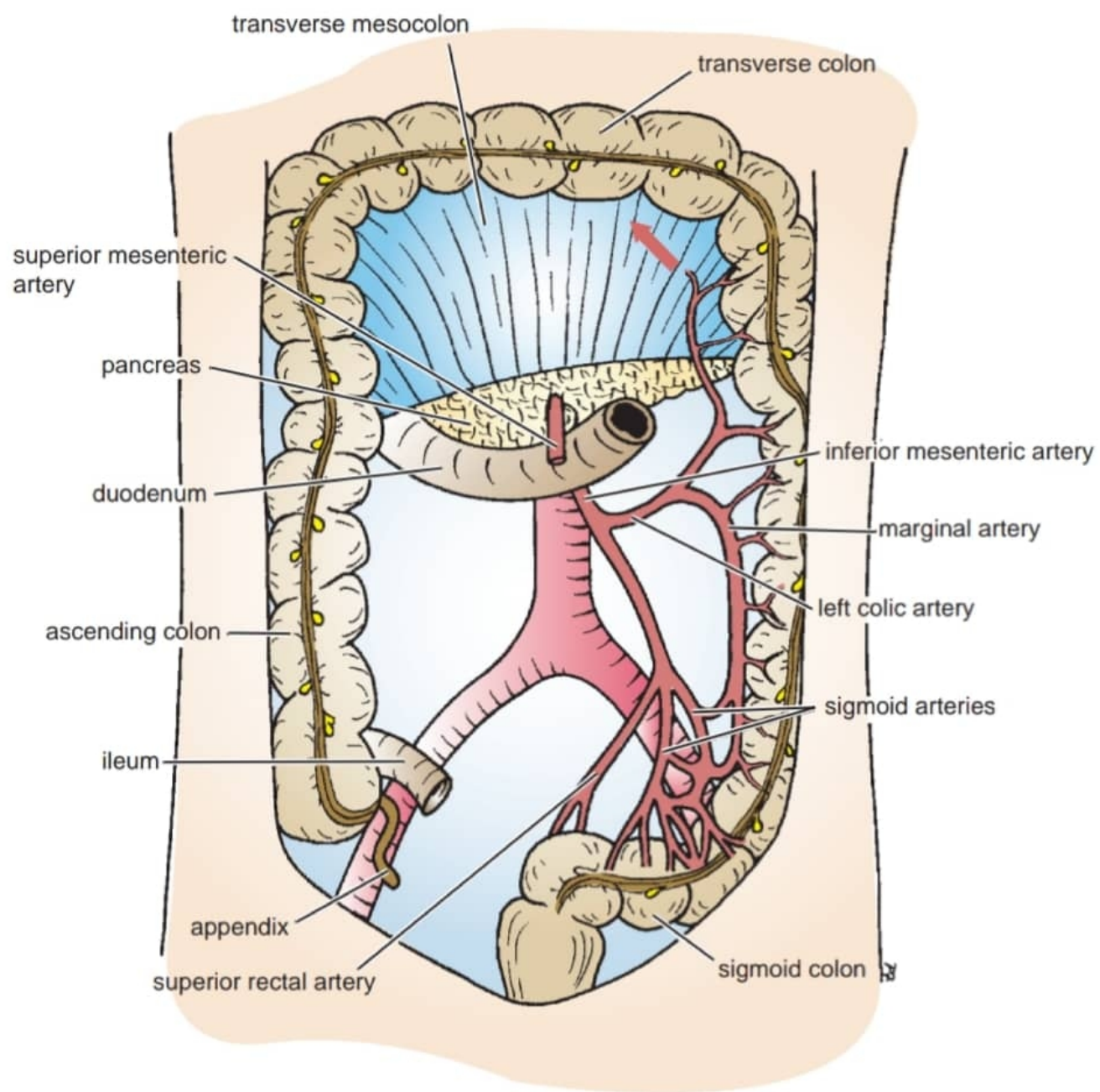
Different parts of the pancreas dissected to reveal the duct system.



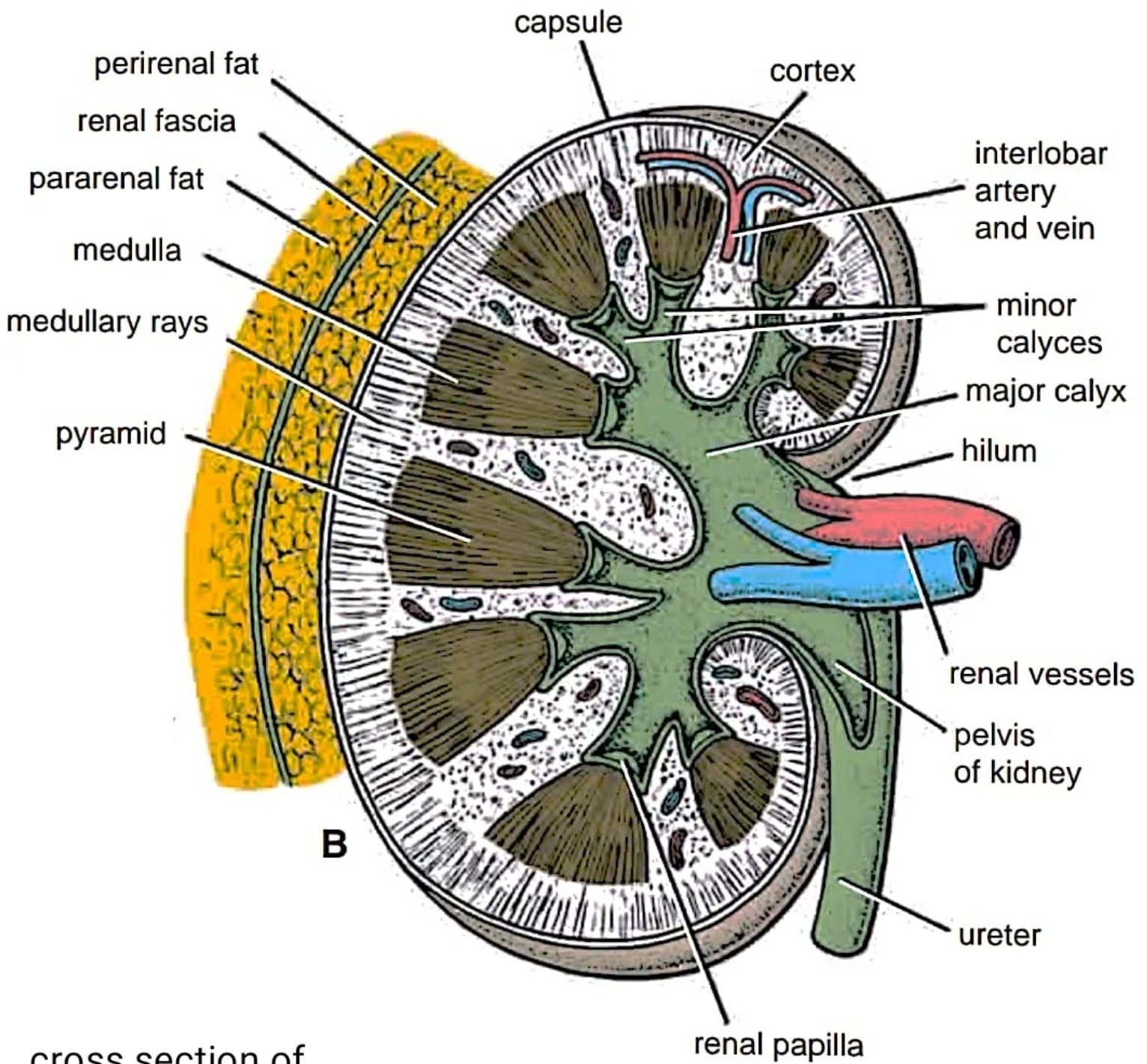
**FIGURE** Spleen.



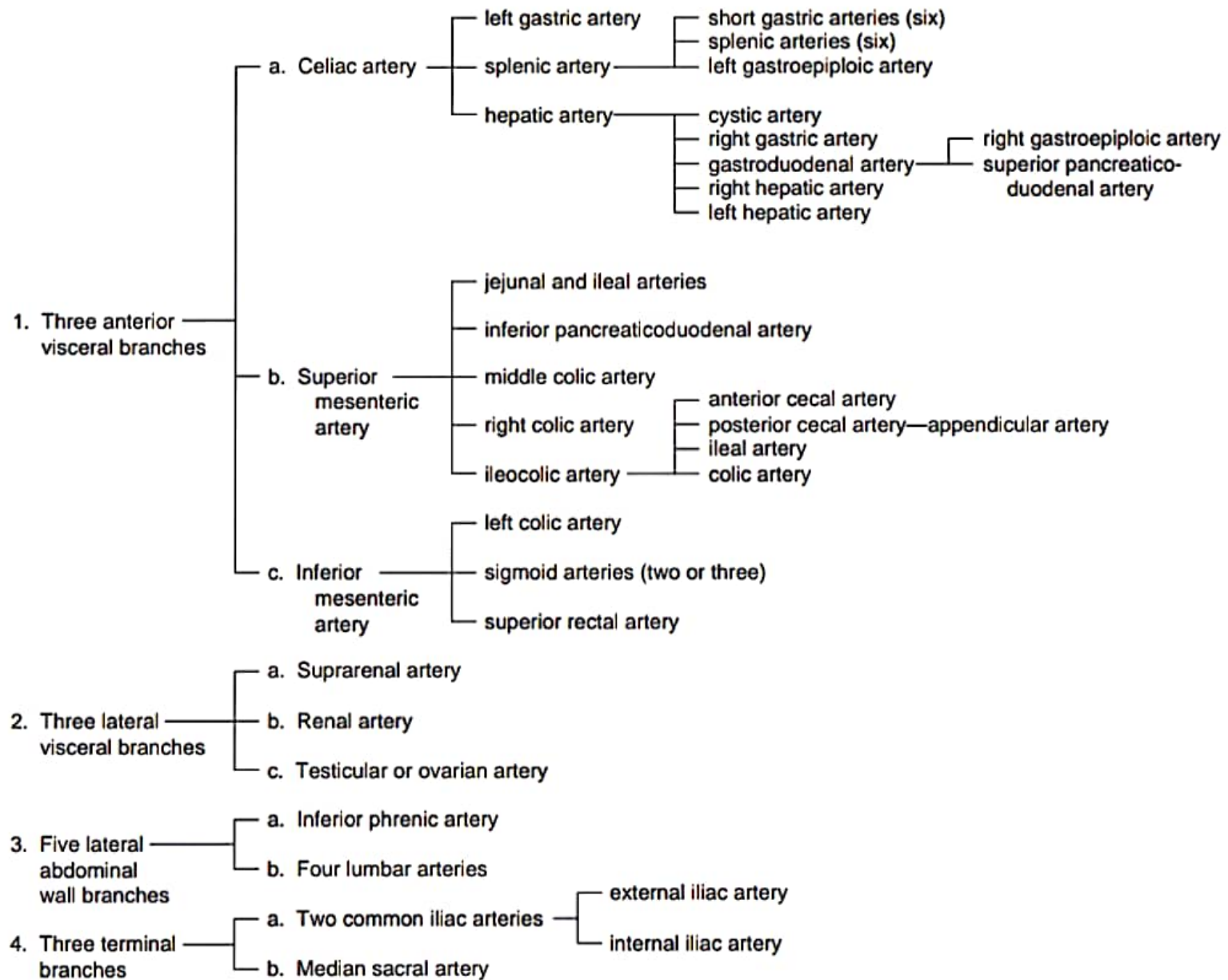
**FIGURE** Arteries that supply the stomach.



**FIGURE** Inferior mesenteric artery and its branches.



cross section of  
Kidney



**DIAGRAM 5.1** Branches of Abdominal Aorta

1. Two anterior visceral tributaries—the hepatic veins

2. Three lateral visceral tributaries

- a. Right suprarenal vein  
(the left drains into the left renal vein)
- b. Renal veins
- c. Right testicular or ovarian vein  
(the left drains into the left renal vein)

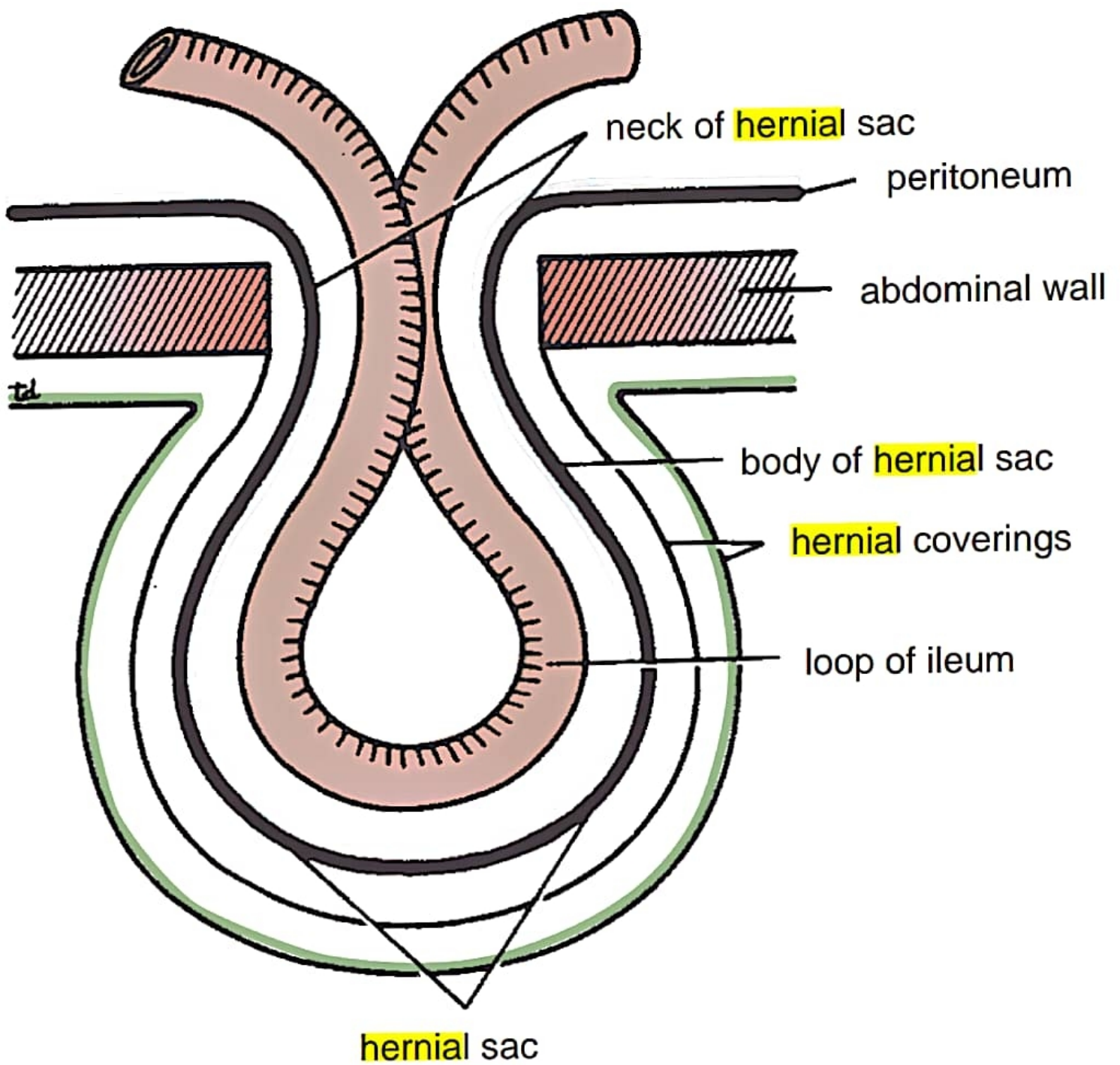
3. Five lateral abdominal wall tributaries

- a. Inferior phrenic vein
- b. Four lumbar veins

4. Three tributaries of origin

- a. Two common iliac veins
  - external iliac vein
  - internal iliac vein
- b. Median sacral vein

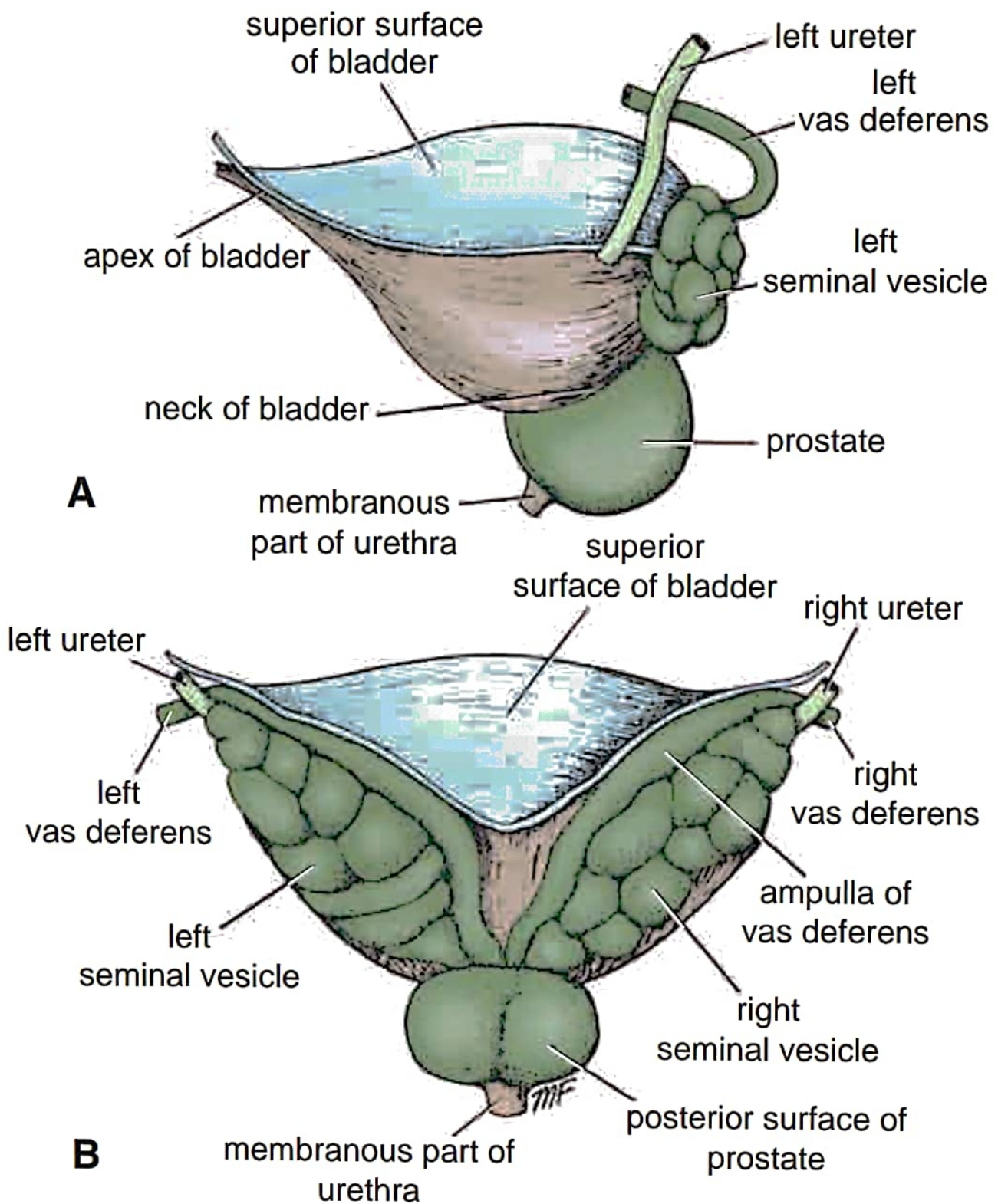
**DIAGRAM 5.2** Tributaries of Inferior Vena Cava



**FIGURE**

Different parts of a **hernia**.

# ANY ONE FROM TWO



**FIGURE 7.13** **A.** Lateral view of the bladder, prostate, and left seminal vesicle. **B.** Posterior view of the bladder, prostate, vasa deferentia, and seminal vesicles.

