

BASIC MEDICAL SCIENCE

FSC MEDICAL TECHNOLOGIES I

DR DANISH

RADIUS & ULNA

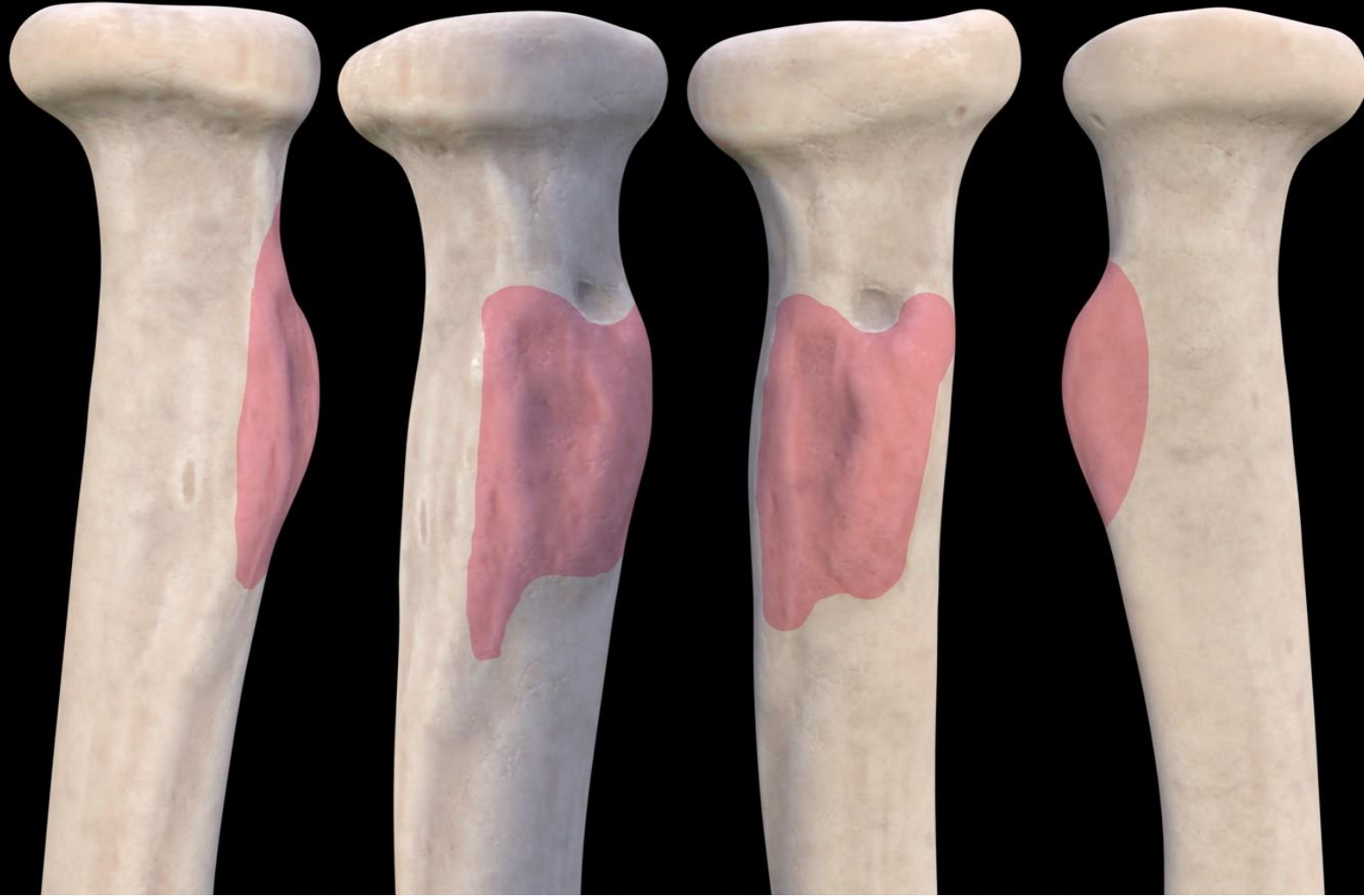
- Bones of forearm between elbow and wrist joint

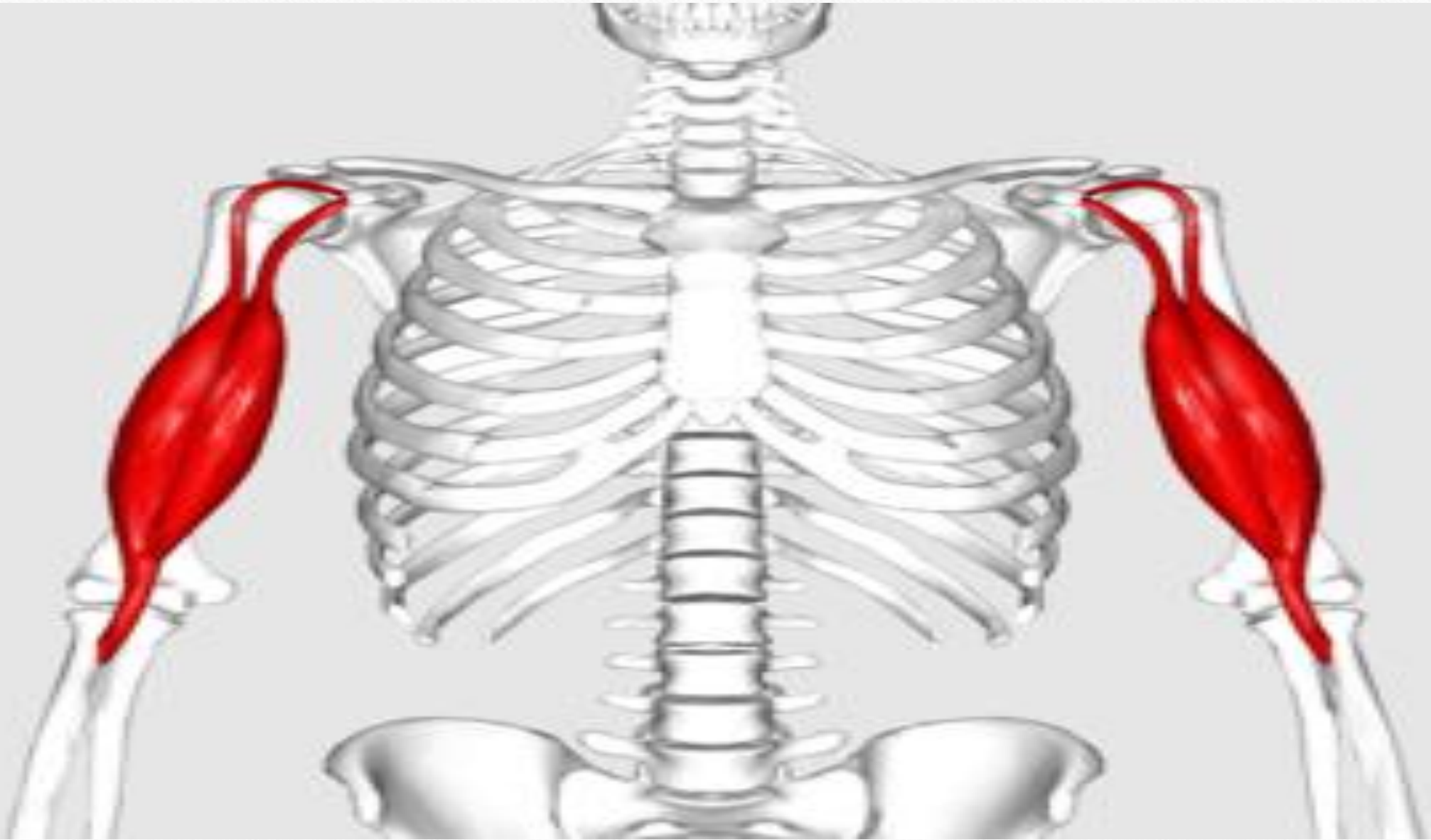


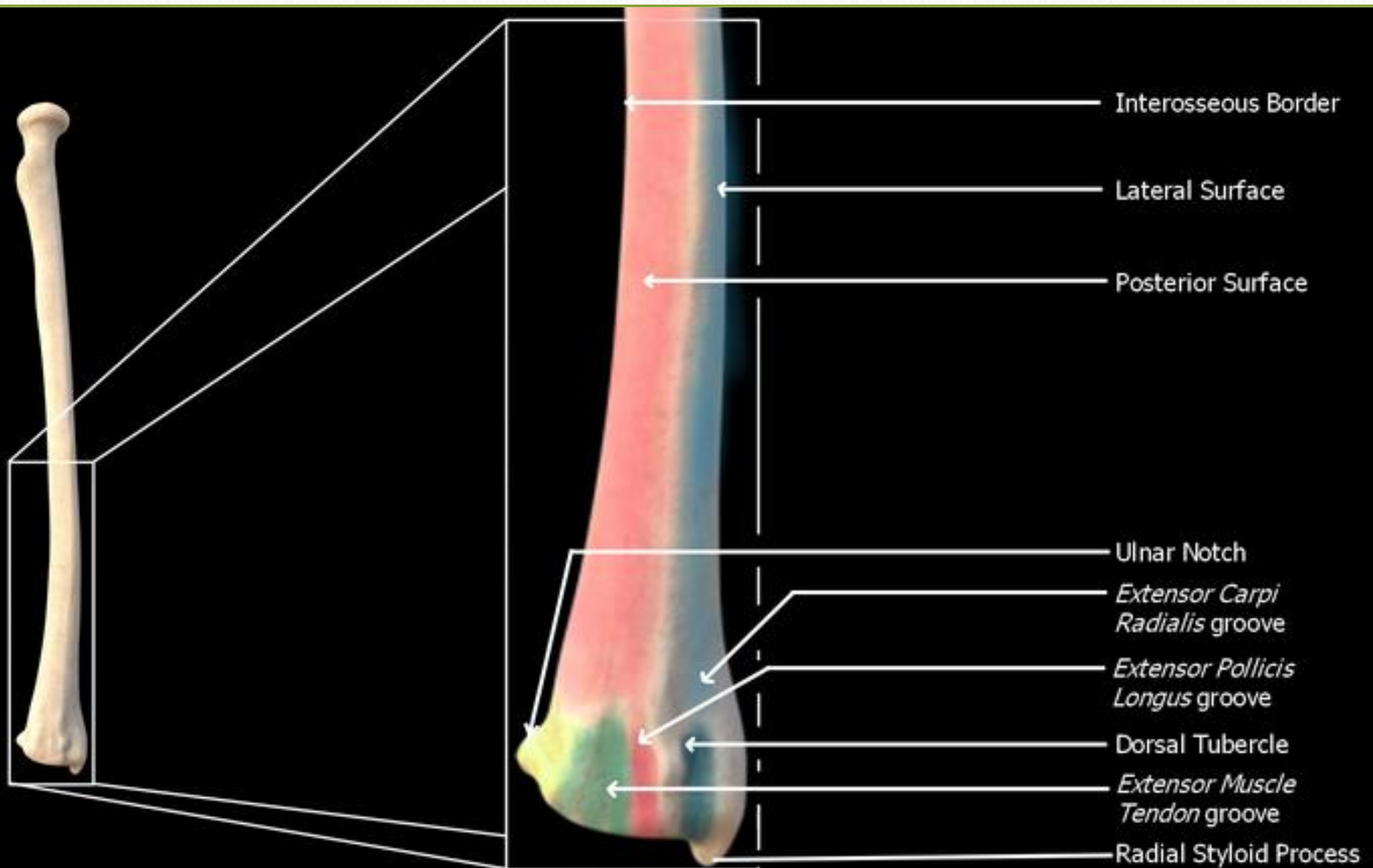
Radius

- **head:** articulate with capitulum of humerus
- **Radial tuberosity:** attachment site for bicep brachi muscle
- **Styloid process:** located distally, stabilizes the wrist joint

Radial or Bicipital
Tuberosity

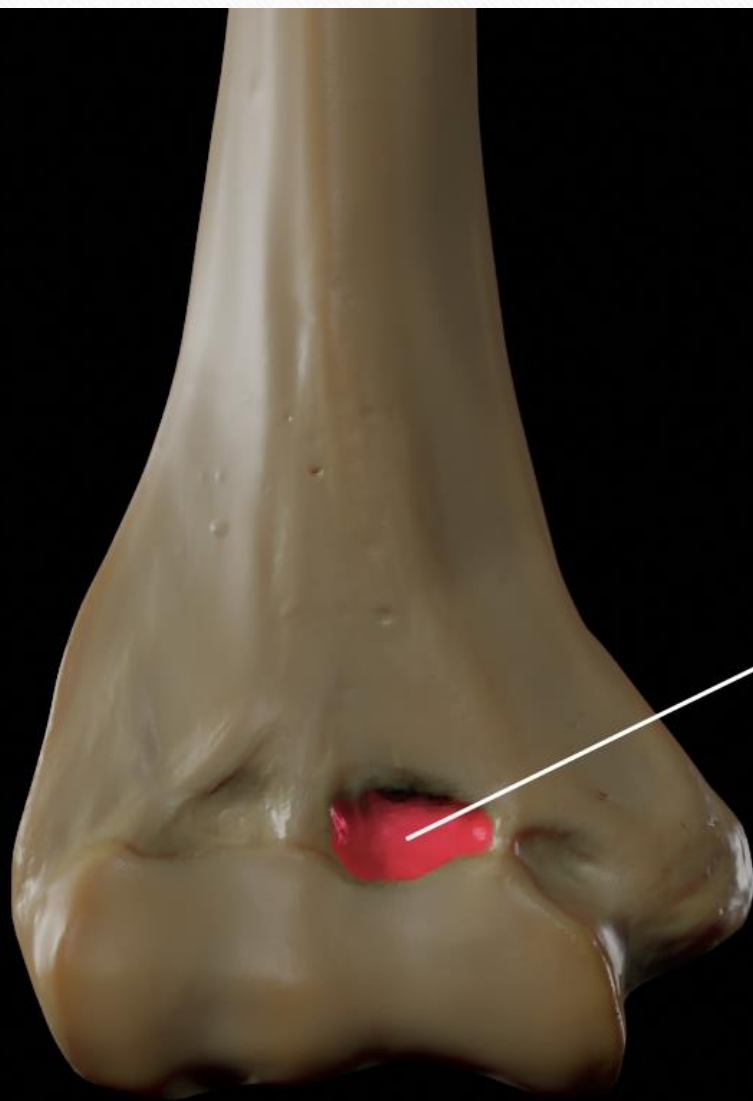






Ulna

- **Olecrenon process:** form bony tip of elbow
- **Coronoid process:** articulates with trochlea of humerus
- **Styloid process:** located distally stabilizes the wrist joint
- **Function:** allow rotation of forearm



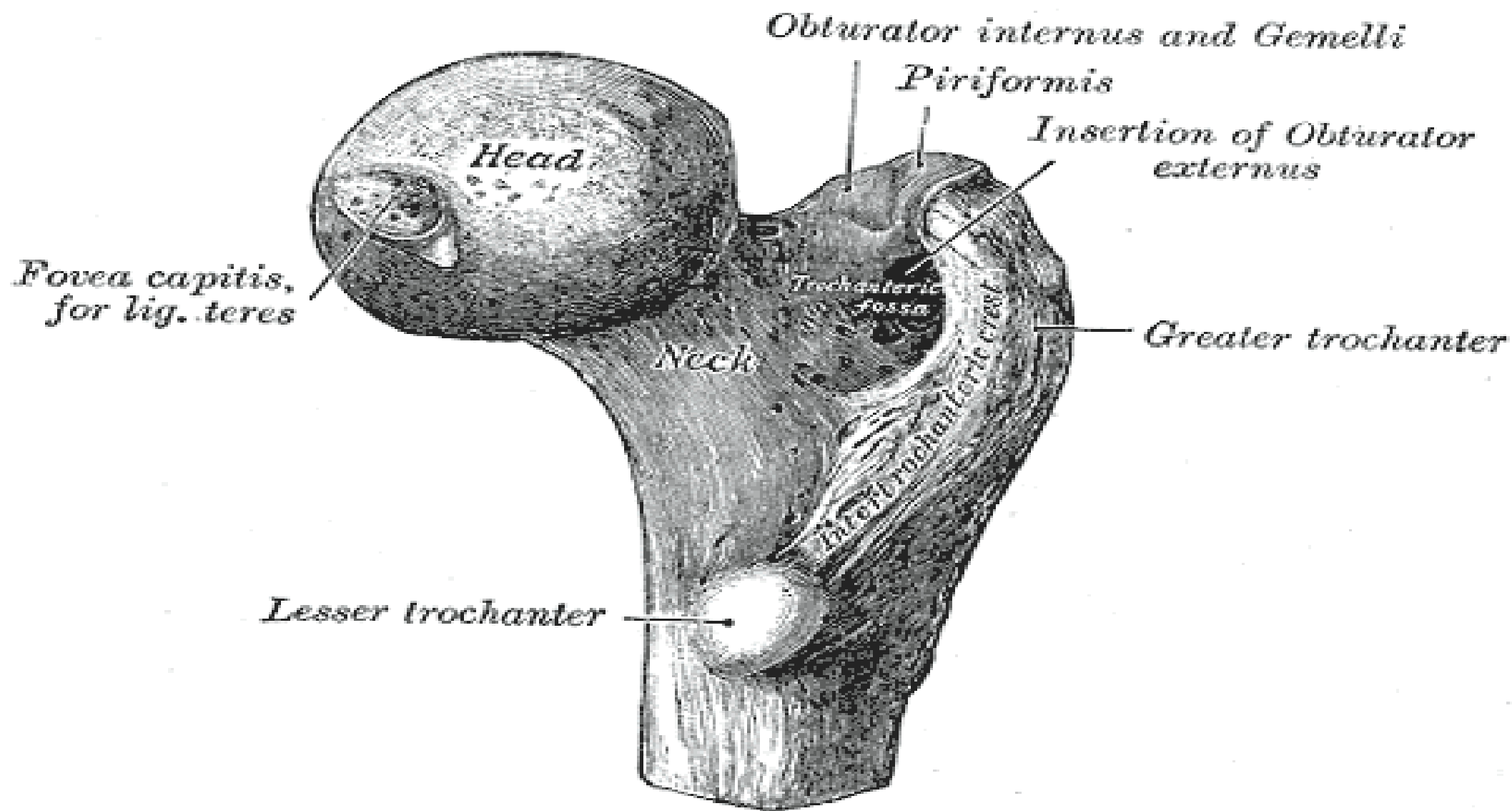
Coronoid Fossa



Femur

- The longest bone of human body, located in thigh
- **Head:** articulates with acetabulum of hip bone
- **Neck:** connect head to shaft
- **Greater & Lesser Trochanters:** proximal to neck, providing attachment for thigh and hip muscles
- **Medial & lateral condyles:** articulate with tibia at knee joint
- **Function:** support body weight and provide attachment for muscles of hip & thigh for movements









THANK YOU

you're the best