

BASIC MEDICAL SCIENCE

FSC MEDICAL TECHNOLOGIES I

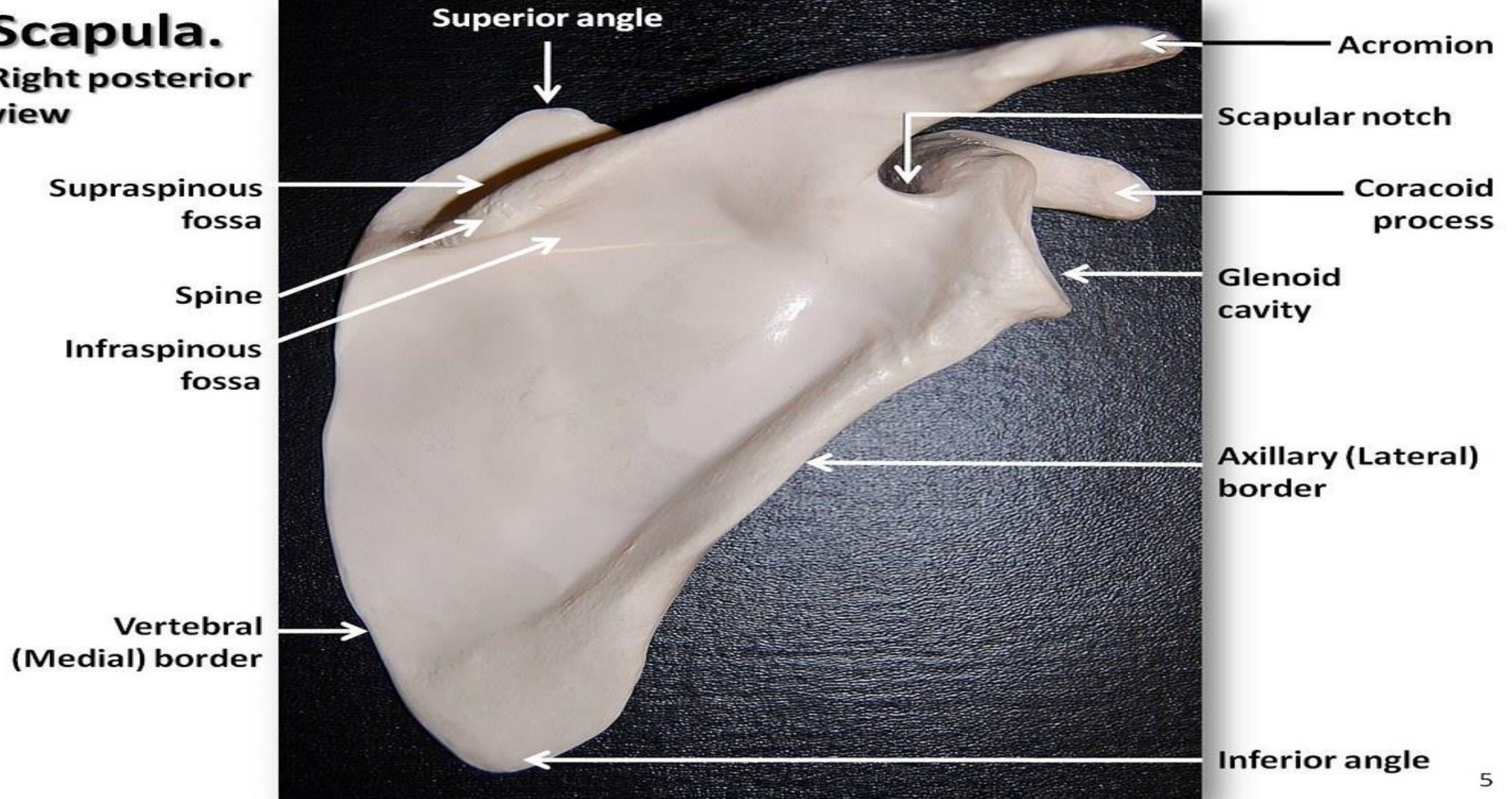
DR DANISH

Scapula

- **Shape:** Triangular shape, located on posterior aspect of thorax
- **Parts:**
- **Acromion process:** forms bony tip of shoulder
- **Coracoid process:** projects anteriorly provide attachment for muscles and ligaments
- **Glenoid cavity:** articulates with humerus head forming glenohumeral joint
- **Spine :** prominent ridge on posterior surface of scapula

Scapula.

Right posterior
view



Functions

- Provide attachment sites for muscles involved in shoulder movement & stabilization

Humerus

- **Location:** the long bone of upper arm B/W shoulder and elbow joint
- **Parts:**
- **Head:** Articulates with glenoid cavity of scapula
- **Greater & lesser tubercles:** proximal to head providing attachment site for muscles
- **Deltoid tuberosity:** rough area for deltoid muscle
- **Medial & lateral epicondyle:** proximal to elbow joint, attachment site for muscles of forearm

continued

- **Trochlea & capitulum** : articulate with ulna & radius at elbow joint
- **Function:** attachment site for muscles involved in shoulder & elbow movement





Thank
You