

BASIC MEDICAL SCIENCE

FSC MEDICAL TECHNOLOGIES I

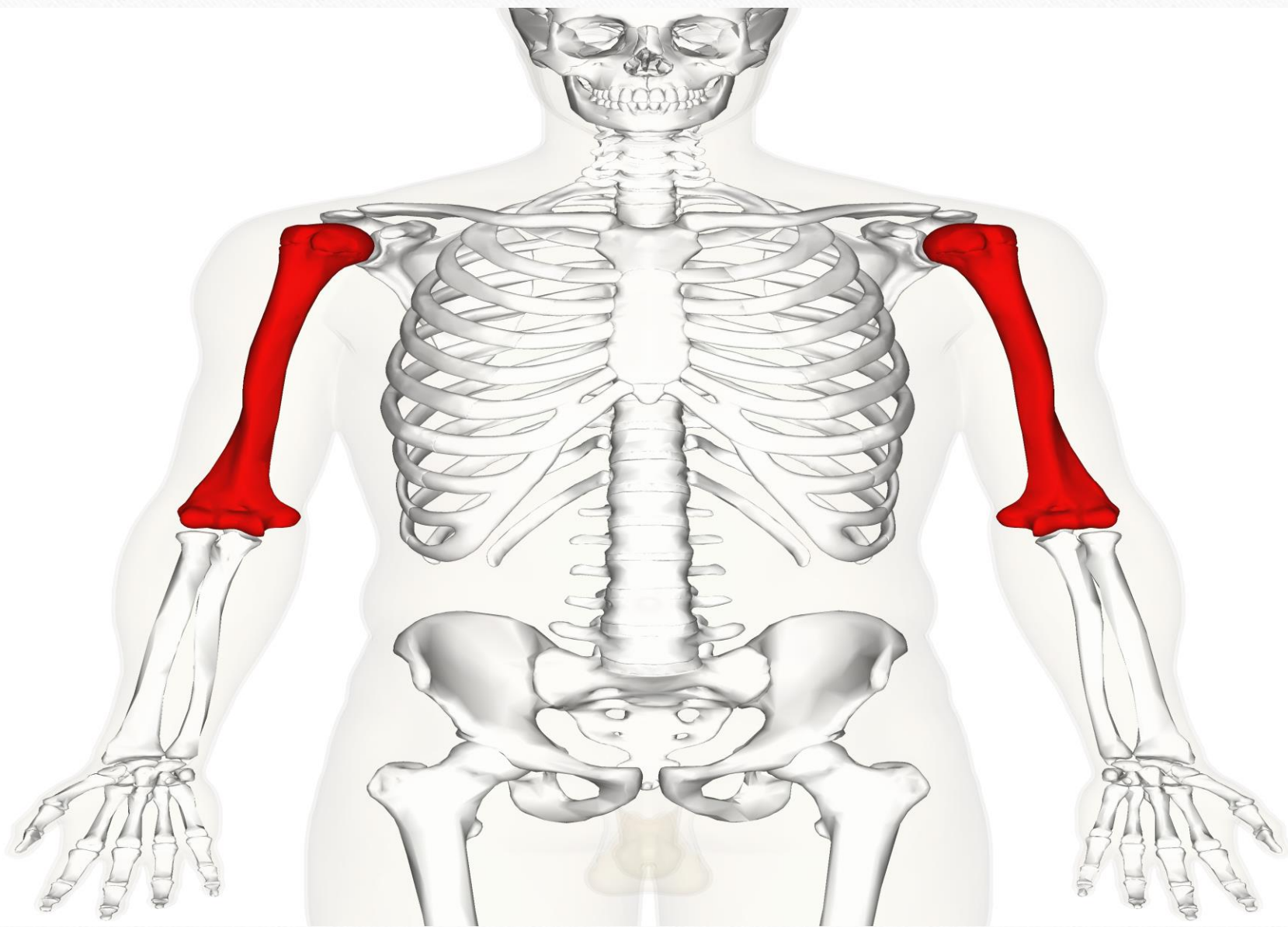
DR DANISH

BONES OF UPPER LIMBS

- Humerus
- Radius & ulna
- Carpals,metacarpals,&phalanges

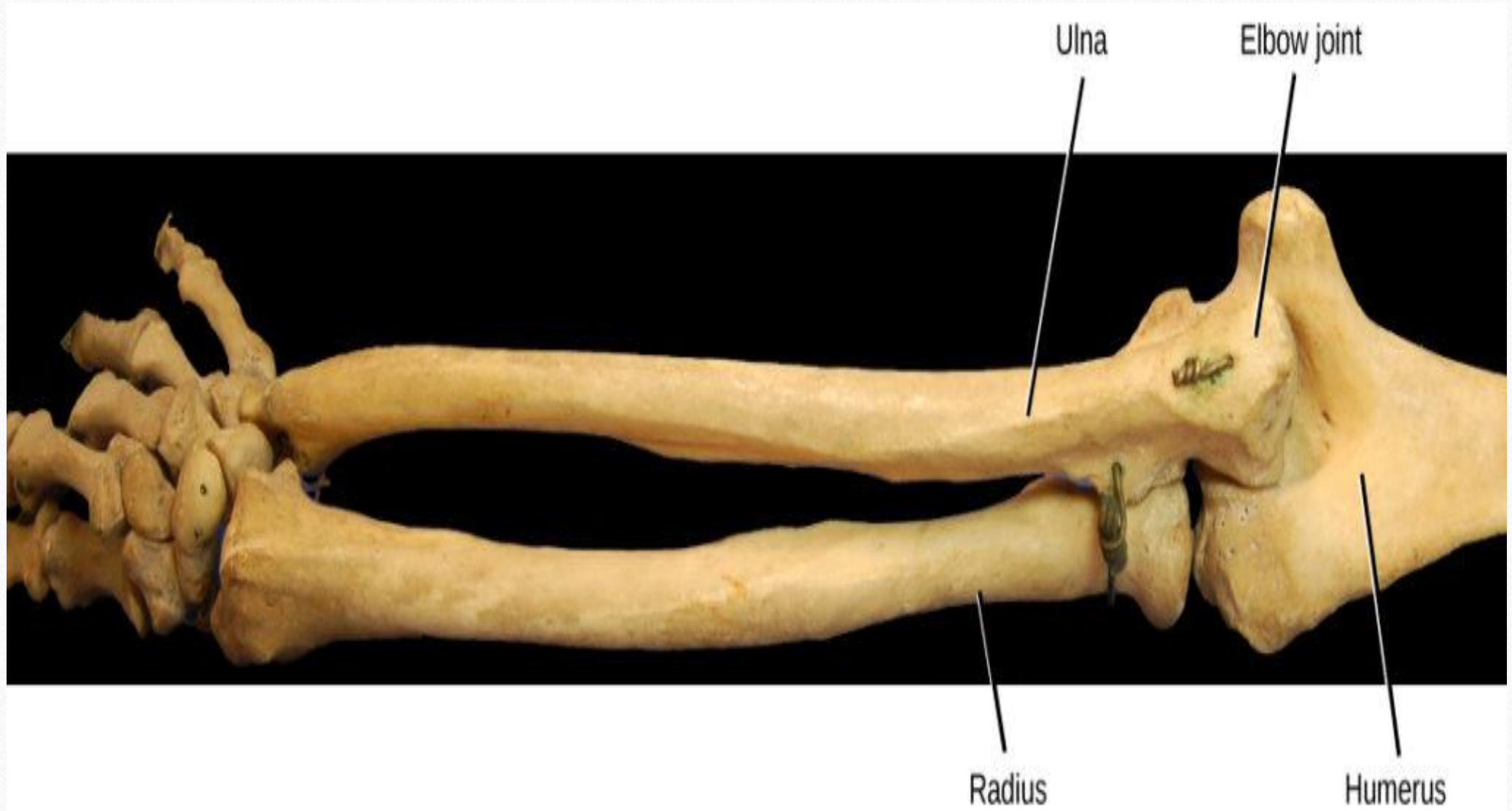
HUMERUS

- The bone of the upper arm
- Articulates with scapula at shoulder joint
- And radius & ulna at elbow joint



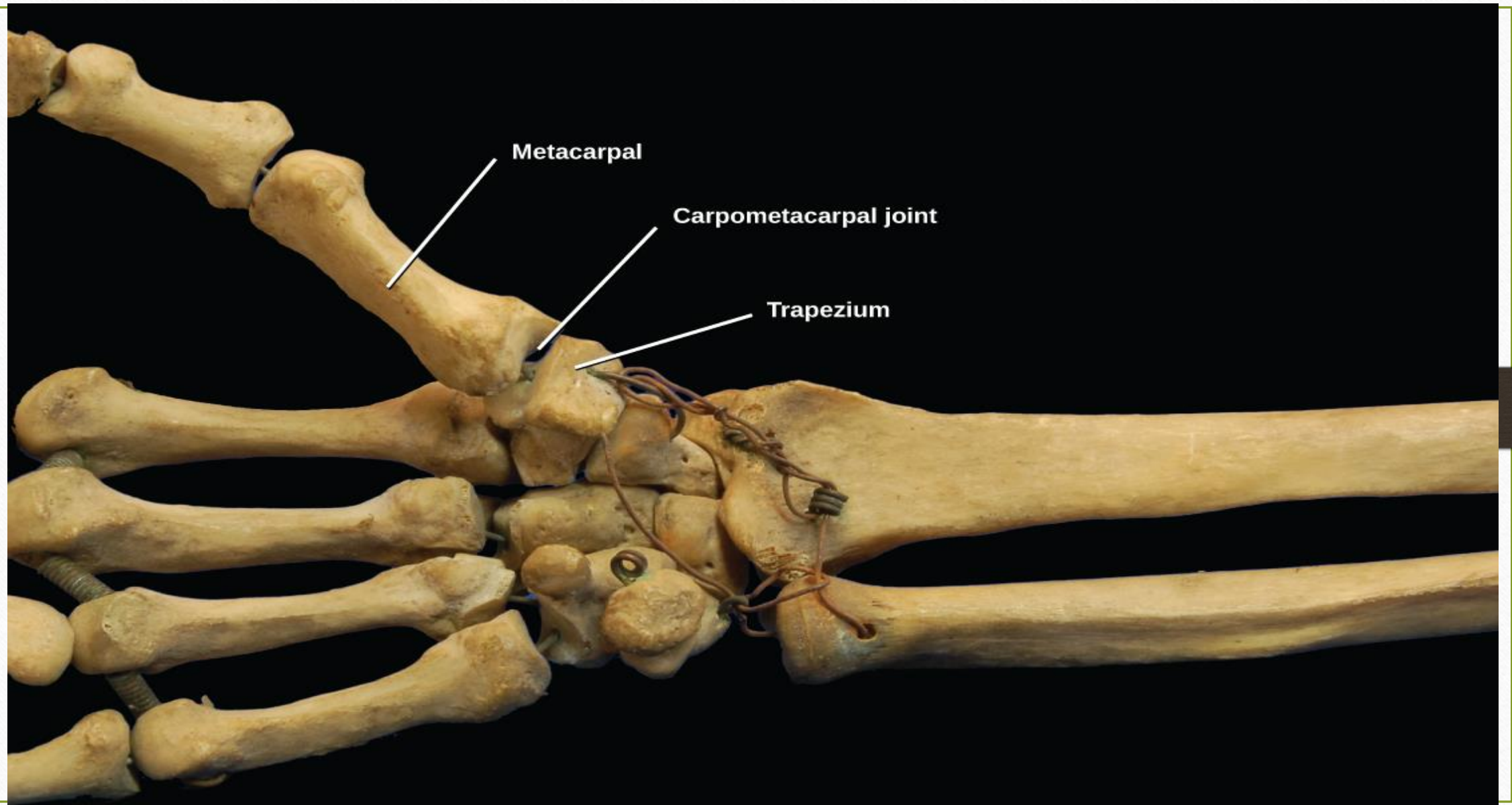
RADIUS & ULNA

- Radius is located on lateral (thumb) side of forearm
- Ulna is located on the medial side of forearm
- Articulates with humerus at elbow joint
- And with each other at proximal & distal radioulnar joints



CARPALS, METACARPALS, & PHALANGES

- Carpals are eight bones of wrist
- Metacarpals are eight bones of wrist
- Phalanges are bones of fingers & thumb



Metacarpal

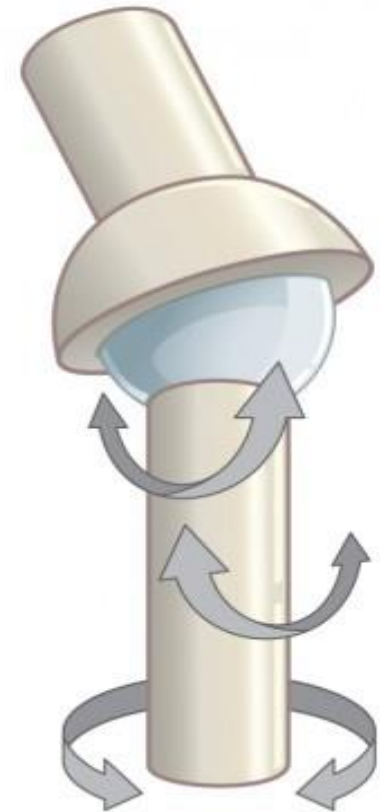
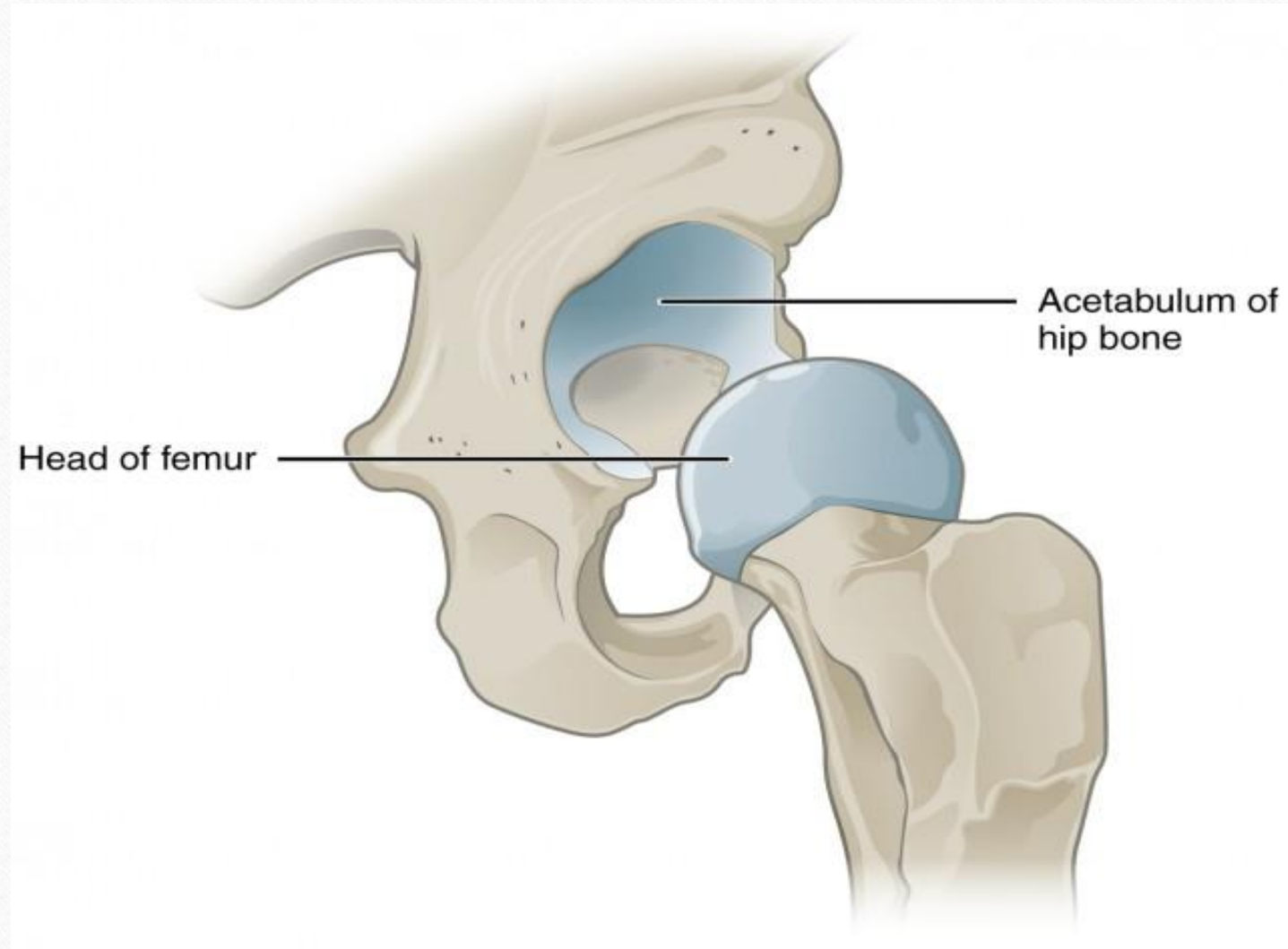
Carpometacarpal joint

Trapezium

BONES OF LOWER LIMB

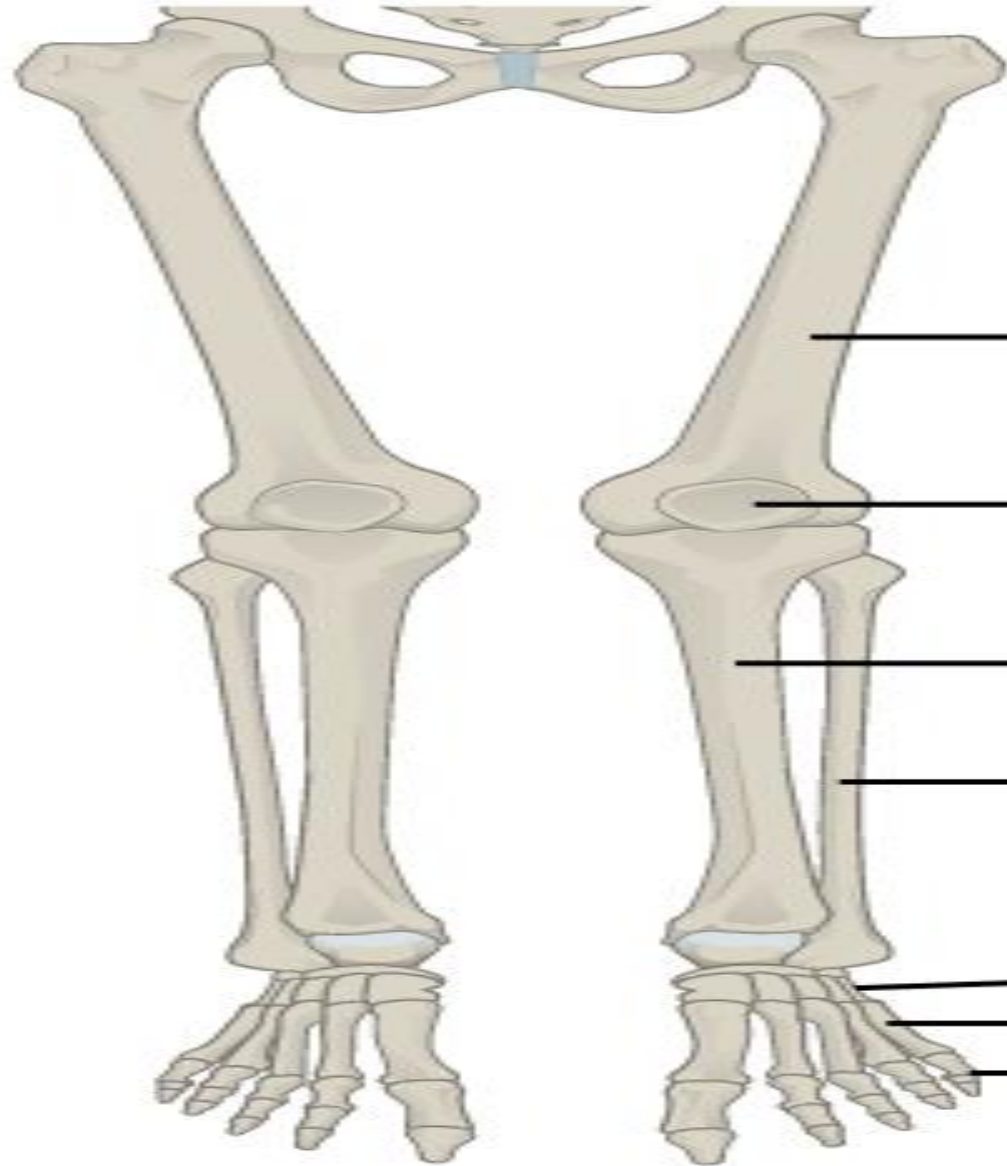
- Bone of the thigh, longest bone in the body
- Articulates with acetabulum of hip bone at hip joint
- And with tibia & patella at knee joint





TIBIA & FIBULA

- Tibia is the larger ,weight bearing bone of lower leg
- The fibula is located on lateral side of lower leg
- They articulate with femur at knee joint & with each other at proximal & distal tibiofibular joint



Femur

Patella

Tibia

Fibula

Tarsals

Metatarsals

Phalanges

Tarsals, Metatarsals, & phalanges

- Tarsals are seven bones of ankle
- Metatarsals are five bones of midfoot
- Phalanges are bones of the toes





THANK
YOU